



design select™

Easy Selection. Service Predictability. Superior Solutions.

ACULUX®

gotham

LITHONIA
LIGHTING

MARK
ARCHITECTURAL LIGHTING

hLIGHT

sensorswitch

RELOC®
WIRING SOLUTIONS



Easy Selection

Product Identification

Quickly identify and choose available products throughout the project journey. Specification sheets will have options highlighted green for simple identification - pick the green!

Visit www.acuitybrands.com/designselect for full program details, available products, and tools to help you choose products for your next project!



Service Predictability

All Design Select products will ship in 15 days or less. Our commitment is to ship and deliver when you need it, whether that is 3 weeks or 3 months.



Superior Solutions

Project Lighting & Controls Made Easy

Full line portfolio of the most popular families and options across a broad range of categories, from trusted brands with over 75 years of consistent performance and quality.

Embedded Technology

Code-compliant luminaire level lighting controls with vertically integrated driver and emergency solutions, help to lower your total installed cost and provide easier lighting control designs with networked embedded control options. Choose from nLight® or standalone embedded control options by SensorSwitch™. To learn more about the value of embedded controls, visit acuitybrands.com/embeddedcontrols.



Choose the Right Program for Your Needs

Everyday Lighting Done Right™

- Our top 300 popular configurations ensure we have the right products, readily available with trusted performance and high product vitality
- Featuring SuperSKUs that offer more versatility, having fewer SKUs gives you more flexibility and higher inventory turns
- Experience high service levels with products that ship same day or next day from our local distribution centers

CS
CONTRACTOR
SELECT™



Project Lighting & Controls Made Easy

- Curated solutions offering a productive project design approach
- Whether you need it in 3 weeks or 3 months, our commitment is to ship and deliver when you need it
- Simplifies everyday applications with easy-to-select comprehensive portfolio



SCAN ME



SCAN ME





Table of Contents

6	Indoor
28	Industrial
34	Downlighting
50	Emergency
56	Outdoor
78	Standalone Lighting Controls
83	Networked Lighting Controls
100	Wiring Solutions
108	Tools and Resources



A modern office interior featuring a curved white wall and ceiling. A round analog clock is mounted on the wall. A white reception desk with a dark base is visible on the right. The floor is a light gray. A large green rectangular overlay is positioned in the lower-left quadrant, containing the word "Indoor" in white text.

Indoor



Indoor

- 8 **Strip Lights**
- 9 **Panels**
- 10 **Lay-Ins**
- 15 **Wraparound**
- 16 **Troffers**
- 17 **Recessed**
- 20 **Pendants**



eldoLED



Lithonia Lighting®

CLX

Linear LED Strip Light

- CLX features an architectural design, built to perform
- Lens and distribution options provide optics tailored for each application, including up to 13% uplight with the wide lens. The CLX can be configured to direct light output where it is needed most. Wide lens and compact reflector options can be used to minimize its Unified Glare Rating, the perceived discomfort of high angle light
- Sleek continuous rows are simple with the included row aligner bracket, providing for ease of installation and labor savings
- CLX is built to withstand the heat commonly found in applications with heavy duty electrical equipment or higher mounting heights

ORDERING INFORMATION

Specifications subject to change.

Example: CLX L48 5000LM SEF WDL MVOLT GZ10 40K 80CRI WH

Series	Length	Nominal Lumens	Performance Package	Lens	Voltage	Driver	Glare Reflector
CLX Commercial linear strip	L48 48IN	3000LM 3,000LM	SEF Standard efficiency	L/Lens Less Lens	120 120V	EZ1 ¹ eldoLED dims to 1% (0-10 volt dimming)	(blank) No reflectors
		4000LM 4,000LM	HEF Premium efficiency	FDL Flat Diffuse	208 208V	GZ10 ² Dims to 10%, (0-10V dimming)	LUGR Reflectors for additional glare reduction
		5000LM 5,000LM		RDL Round Diffuse	240 240V		
		7000LM 7,000LM		WDL Wide Diffuse	277 277V		
		9000LM 9,000LM			MVOLT 120-277V		
		10000LM 10,000LM					
	L96 96IN	6000LM 6,000LM					
		8000LM 8,000LM					
		10000LM 10,000LM					
		14000LM 14,000LM					
		18000LM 18,000LM					
		20000LM 20,000LM					

Color Temperature	CRI	Options	nLight® Wireless	nLight® Wired	Standalone Controls	Finish
30K 3000K	80CRI 80 CRI	PS1050 Emergency battery pack, 10W, CA Title 20 non-compliant	NLTAIR2 RES7 ⁷ nLight® Generation 2 enabled PIR integral occupancy sensor with automatic dimming photocell	N100 ⁸ nLight without lumen management	MSD7 ⁹ PIR integral occupancy sensor	WH White
35K 3500K	90CRI 90 CRI	E10WLC ^{3,4} Emergency battery pack, 10W Linear Constant Power, Certified to CA Title 20 MAEDBS	NLTAIR2 RES7EM nLight AIR Generation 2 enabled PIR integral occupancy sensor with automatic dimming photocell and UL924 Emergency operation, via power interrupt detection	N100EMG ⁸ nLight without lumen management, for use with generator supply EM power	MSDPDT7 ⁹ PDT 7 dual technology integral occupancy control	
40K 4000K		OCS 5', 18/3 Reloc selectable OnePass cable (fixture will bear dry location label)	NLTAIR2 RES7PDT ⁷ nLight AIR Generation 2 enabled dual technology integral occupancy sensor with automatic dimming photocell			
50K 5000K		HA ⁵ High ambient, for use in ambient temperatures up to 50°C				
		CS93W 600V SE00W white cord, no plug (no voltage required)				
		SPD Surge protection device, provides up to 6kV protection	NLTAIR2 RIO ⁷ No sensor control			
		PLR1G Single-circuit through wire including ground wire				
		PLR1LVG ⁶ Single-circuit through wire including ground wire, low voltage				

Notes

- Not available with 5000LM
- Not available with Individual controls, nLight wired networking, nLight wireless networking, nLight wireless zone control options
- Requires SPD option Not available with L48 in combination with N100
- Not available with HA option
- Not available with EZ1, only available with L48 3000/4000/5000LM and L96 6000/8000/10000LM
- Not available with Individual controls, nLight Wired, or nLight Wireless options
- Not available with L48 10000LM, L96 10000LM or 14000LM
- Requires a connection to existing nLight network. Power is provided from separate N100 enabled fixture
- Not available with any other control option. Requires EZ1. Sensor housing will be the same color as lens end caps

CPX

Configurable LED Panel

- Fully luminous backlit panel available in 1'x4', 2'x2', and 2'x4' sizes
- Available with lumen packages ranging from 3,200 to 10,000 lumens
- Wide range of configurable options
- Ideal for budget-conscious schools, commercial offices, retail, healthcare, and educational spaces



ORDERING INFORMATION

Specifications subject to change.

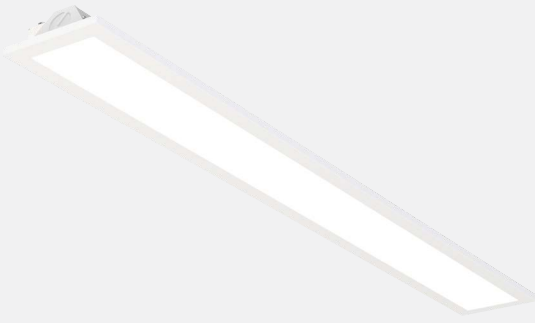
Example: CPX 2X2 3200LM 80CRI 40K SWL MIN10 ZT MVOLT E10WLCP

Series		Size		Lumens		CRI		Color Temperature		Diffuser		Minimum Dimming		Dimming ¹	
CPX	LED Panel	1X4	1' X 4'	3200LM	3,200 Lumens	80CRI	80 CRI	35K	3500K	SWL	Satin White	MIN1 ¹	Dims to 1%	(blank)	none
				4000LM	4,000 Lumens									ZT	Generic 0-10V Dimming
				5000LM	5,000 Lumens									EZT ²	eldoLED 0-10V Dimming
		2X2	2' X 2'	2000LM	2,000 Lumens										
				3200LM	3,200 Lumens										
				4000LM	4,000 Lumens										
				5000LM	5,000 Lumens										
				6000LM	6,000 Lumens										
		2X4	2' X 4'	3000LM	3,000 Lumens										
				4000LM	4,000 Lumens										
				5000LM	5,000 Lumens										
				6000LM	6,000 Lumens										
				7200LM	7,200 Lumens										
				8500LM	8,500 Lumens										
				10000LM	10,000 Lumens										

Voltage		Emergency Option		Controls Input		Sensor		Options	
MVOLT	MVOLT, 120V-277V	(blank)	No battery	(blank)	No controls	(blank)	No sensor	PWS1836 ⁶	6' pre-wire, 3/8" diameter, 18 gauge, 1 circuit
120	120V	E10WLCP ⁴	EM Self-Diagnostic battery pack, 10W Constant Power, Certified in CA Title 20 MAEDBS	NLTAIR2 ⁵	nLight AIR Generation 2 (wireless) enabled	APIR	Occ sensing with passive infrared - on/off functionality and auto dimming photocell	PWS1856LV ^{6,7}	6' pre-wire, 3/8" diameter, 18 gauge, 1 circuit w/low voltage
277	277V					APDT	Occ sensor dual tech (passive infrared & microphonics) and auto dimming photocell		
						APIREM	Occ sensing with passive infrared - on/off functionality and auto dimming photocell and UL924 Emergency Operation, via power interrupt detection		

Notes

1. Required for all Control Input options
2. Not available with 10000LM combined with 2X4.
3. If Control Input option is selected leave this section blank.
4. Configurations with E10WLCP to be used in daisy chaining or through wiring will require a Y connector, not supplied.
5. See UL924 Sequence of Operation Chart on full [spec sheet](#) on page 3. Can be used as a normal power sensing device for nLight AIR devices and luminaires with EM emergency options.
6. Not available with E10WLCP.
7. Not available with controls.



Lithonia Lighting®

LSIX

Lithonia® Six LED Linear Lay-In

- Provides modern design, ease of install and is environmentally responsible
- Ideal choice for high-quality, cost-effective LED lighting solution for schools, offices, retail, healthcare facilities and other commercial spaces

ORDERING INFORMATION

Specifications subject to change.

Example: LSIX 4FT 4000LM 80CRI 40K FFR SWL MIN1 ZC MVOLT MW NLTAIR2

Series		Length		Nominal Lumens		CRI		Color Temperature		Frame Style		Optics		Minimum Dimming	
LSIX	Lithonia Six	4FT	4 Foot	3000LM	3,000LM	80CRI	80 CRI	35K	3500K	FFR	Extruded Flat Frame	SWL	Satin White	MIN1¹	Dims to 1%
				4000LM	4,000LM	90CRI	90 CRI	40K	4000K						
				5000LM	5,000LM										
				6000LM	6,000LM										
		8FT	8 Foot	6000LM	6,000LM									MIN10	Dims to 10%
				8000LM	8,000LM										

Dimming²		Voltage		Emergency Options		Finish		Control Input		Sensor	
ZT	Generic Driver 0-10V	MVOLT	120-277V	(blank)	No Emergency Option	MW	Matte White	(blank)	No Control Input	(blank)	No Sensor or Control Input function only, if selected
ZC	Generic Driver compatible with controls			E10WLCP³	EM Self-Diagnostic battery pack, 10W Constant Power, Certified in CA Title 20 MAEDBS			NLTAIR2⁴	nLight AIR Generation 2 (wireless) enabled	APIR	Occ sensing with passive infrared - on/off functionality and auto dimming photocell
										APDT	Occ sensor dual tech (passive infrared & microphonics) and auto dimming photocell
										APIREM	Occ sensing with passive infrared - on/off functionality and auto dimming photocell and UL924 Emergency Operation, via power interrupt detection

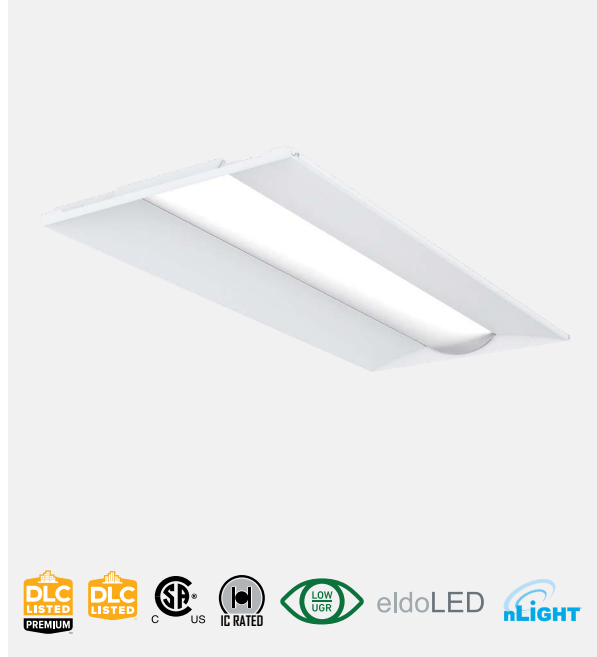
Notes

1. Required for all Control Input options
2. ZC only available with Control Input option selections. ZT is NOT available with Control Input options selections.
3. Remote test switch if chosen with Sensor option group.
4. See UL924 Sequence of Operation chart on full [spec sheet](#) (page 4). Can be used as a normal power sensing device for nLight AIR devices and luminaires with EM emergency options.

STACK™

LED Center Element Lay-In

- The wide center basket and curved matte reflector allow STACK to deliver a high quality of light while maintaining optimal performance
- Features a Low Unified Glare Rating (UGR) providing consistent and efficient light distribution for enhanced visual comfort
- The STACK luminaire is available with wireless networked embedded controls from nLight®, addressing the requirements of Luminaire Level Lighting Controls (LLLC). An nLight AIR sensor is embedded with in this luminaire.
- Long-life LED's, coupled with high-efficiency drivers provide superior quality of light and an extended service life. 80% LED lumen maintenance at 60,000 hours (L80/60,000). 0-10 volt dimming driver, dims to 1%.



ORDERING INFORMATION

Specifications subject to change.

Example: STAK 2X4 5000LM 80CRI 40K COL MIN10 ZT MVOLT

Series		Size		Lumens		CRI		Color Temperature		Lens		Minimum Dimming	
STAK	Stack LED Center Element Troffer	2X2	2FT x 2FT	3000LM	Nominal 3,000 LM	80CRI	80 CRI	35K	3500K	COL	Curved Opal Lens	MIN1 ¹	Dims to 1%
				4000LM	Nominal 4,000 LM			40K	4000K	COLT	Curved Opal Lens with Trim	MIN10	Dims to 10%
				5000LM	Nominal 5,000 LM								
		2X4	2FT x 4FT	3000LM	Nominal 3,000 LM								
				4000LM	Nominal 4,000 LM								
				5000LM	Nominal 5,000 LM								
				6000LM	Nominal 6,000 LM								

Dimming ²		Voltage		Emergency Options		Controls Input		Sensor		Options	
(blank)	none	MVOLT	MVOLT, 120V-277V	E10WLCP	EM Self-Diagnostic battery pack, 10W Constant Power, Certified in CA Title 20 MAEDBS	(blank)	No control input	(blank)	No Sensor or Control Input function only, if selected	PWS1836	6' pre-wire, 3/8" diameter, 18 gauge, 1 circuit
EZT	eldoLED 0-10V Dimming	120	120V			NLTAIR2 ³	nLight AIR Generation 2 (wireless) enabled	APIR	Occ sensing with passive infrared - on/off functionality and auto dimming photocell	PWS1856LV ⁴	6' pre-wire, 3/8" diameter, 18 gauge, 1 circuit w/ low voltage
ZT	Generic 0-10V Dimming	277	277V			NLTAIREM2	nLight AIR Generation 2 (wireless) enabled and UL924 Emergency Operation, via power interrupt detection	APDT	Occ sensor dual tech (passive infrared & microphonics) and auto dimming photocell		
								APIREM	Occ sensing with passive infrared - on/off functionality and auto dimming photocell and UL924 Emergency Operation, via power interrupt detection		

Notes

1. Required for all Control Input options
2. If Control Input option is selected leave this section blank.
3. See UL924 Sequence of Operation chart on full [spec sheet](#) on page 4. Can be used as a normal power sensing device for nLight AIR devices and luminaires with EM emergency options
4. Not available with nLight wired network or individual controls



eldoLED

Lithonia Lighting®

BLT Series

Low-Profile Recessed LED Luminaire

- Flicker-free dimming – eldoLED® 1% drivers
- Choose how you control – Control an entire campus or a single room with nLight® Networked Lighting Controls
- Maximum rebate opportunities – DLC Standard and Premium listed on most configurations

ORDERING INFORMATION

Specifications subject to change.

Example: BLT4 40L ADP EZ1 LP840

Series	Lumens	Diffuser	Voltage	Driver	Color Temperature
BLT4 1x4 BLT	30L 3,000LM	ADP Curved, ribbed	(blank) MVOLT (120-277V)	EZ1 eldoLED dims to 1% (0-10V dimming)	LP830 82CRI, 3000K
	40L 4,000LM	ADPT Curved, ribbed (includes trim ring)	120 120V	GZ1 Dims to 1%, (0-10V dimming)	LP835 82CRI, 3500K
	48L 4,800LM	ADSM Curved, smooth	277 277V	GZ10 Dims to 10%, (0-10V dimming)	LP840 82CRI, 4000K
2BLT2 2x2 BLT	20L 2,000LM	ADSMT Curved, smooth (includes trim ring)			LP930 90CRI, 3000K
	33L 3,300LM	SDP Square, ribbed			LP935 90CRI, 3500K
	40L 4,000LM	SDSM Square, smooth			LP940 90CRI, 4000K
	48L 4,800LM	SDPT Square, ribbed (includes trim ring)			
2BLT4 2x4 BLT	30L 3,000LM	SDSMT Square, smooth (includes trim ring)			
	40L 4,000LM				
	48L 4,800LM				
	60L 6,000LM				
	72L 7,200LM				
	85L 8,500LM				
	100L 10,000LM				
	120L 12,000LM				

nLight Interface	Control	Options
(blank) no nLight® interface	(blank) No sensor control	E10WLCP EM Self-Diagnostic battery pack, 10W Constant Power, Certified in CA Title 20 MAEDBS
N100 nLight without lumen management	RES7 nLight AIR control with PIR integral occupancy sensor and automatic dimming photocell	EL14L 1400 lumen battery pack (non-compliant with CA T20)
NLTAIR2 ¹ nLight AIR Generation 2 enabled	RES7EM ^{1,2} nLight AIR PIR integral occupancy sensor with automatic dimming photocell and UL924 Emergency Operation, via power interrupt detection	PWS1836 6' pre-wire, 3/8" diameter, 18 gauge, 1 circuit
	RES7PDT nLight AIR microphonics dual technology occupancy sensor with automatic dimming photocell	PWS1856LV ⁴ 6' pre-wire, 3/8" diameter, 18 gauge, 1 circuit w/low voltage wire
	RIO nLight AIR radio module without sensor	WH Glossy white finish
	NOC ³ NOC Occupancy sensor disabled	

Notes

1. Not available with GZ10 driver

2. Not available with GZ1 driver

3. Can only be ordered in conjunction with EZ1 or GZ1, NLTAIR2, RES7/RES7PDT. Occupancy sensor disabled at factory but can be re-enabled upon commissioning

4. Not available with nLIGHT wired network or individual controls

2BLT2R

BLTR Relight Series

- Enhances the quality of lighting in your space
- Complete installation from the room side – no need to access the plenum
- Converts existing fluorescent troffers or parabolics
- Energy savings of up to 70%
- 0-10V dimming down to 10% (1% optional)
- Nearly all configurations are DLC Premium or DLC Standard qualified products and are eligible for utility rebates



ORDERING INFORMATION

Specifications subject to change.

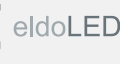
Example: 2BLT2R 33L ADP EZ1 LP835

Series	Lumens	Diffuser	Voltage	Driver	Color Temperature
2BLT2R 2X2 BLTR	20L 2,000LM	ADP Curved, linear prisms	(blank) MVOLT	EZ1 eldoLED dims to 1% (0-10V dimming)	LP835 82CRI, 3500K LP840 82CRI, 4000K
	33L 3,300LM	ADSM Curved, smooth		GZ1 ¹ Dims to 1%, (0-10V dimming)	
	40L 4,000LM	Diffusers w/trim rings		GZ10 ¹ Dims to 10%, (0-10V dimming)	
		ADPT Curved, linear prisms ADSMT Curved, smooth			

Control Options	Options
(blank) no nLight® interface	E10WLCP EM Self-Diagnostic battery pack, 10W Constant Power, Certified in CA Title 20 MAEDBS
NLTAIR2 ² nLight AIR Generation 2 enabled	JP40 Job Pack
RES7 nLight AIR control with PIR integral occupancy sensor and automatic dimming photocell	
RES7PDT nLight AIR control with PDT dual technology integral occupancy sensor and automatic dimming photocell	
RIO nLight AIR radio module without sensor	
RES7EM nLight AIR PIR integral occupancy sensor with automatic dimming photocell and UL924 Emergency Operation, via power interrupt detection	
NOC ³ Occupancy sensor disabled	

Notes

1. Not available with any control or sensor option.
2. Must order with RES7, RES7PDT or RIO sensor. Only available with EZ1 driver.
3. Can only be ordered in conjunction with EZ1, NLTAIR2, RES7/RES7PDT. Occupancy sensor disabled at factory but can be re-enabled upon commissioning.



Lithonia Lighting®

2BLT4R

BLTR Relight Series

- Enhances the quality of lighting in your space
- Complete installation from the room side – no need to access the plenum
- Converts existing fluorescent troffers or parabolics
- Energy savings of up to 70%
- 0-10V dimming down to 10% (1% optional)
- Nearly all configurations are DLC Premium or DLC Standard qualified products and are eligible for utility rebates

ORDERING INFORMATION

Specifications subject to change.

Example: 2BLT4R 40L ADP EZ1 LP840

Series	Lumens	Diffuser	Voltage	Driver	Color Temperature
2BLT4R 2X4 BLTR	30L 2,000LM	ADP Curved, linear prisms	(blank) MVOLT	EZ1 eldoLED dims to 1% (0-10V dimming)	LP835 82CRI, 3500K LP840 82CRI, 4000K
	40L 3,000LM	ADSM Curved, smooth		GZ1 ¹ Dims to 1%, (0-10V dimming)	
	48L 4,800LM	Diffusers w/trim rings ADPT Curved, linear prisms ADSMT Curved, smooth		GZ10 ¹ Dims to 10%, (0-10V dimming)	

Control Options

(blank)	no nLight® interface
NLTAIR2 ²	nLight AIR Generation 2 enabled
RES7	nLight AIR control with PIR integral occupancy sensor and automatic dimming photocell
RES7PDT	nLight AIR control with PDT dual technology integral occupancy sensor and automatic dimming photocell
RIO	nLight AIR radio module without sensor
RES7EM	nLight AIR PIR integral occupancy sensor with automatic dimming photocell and UL924 Emergency Operation, via power interrupt detection
NOC ³	Occupancy sensor disabled

Options

E10WLCP	EM Self-Diagnostic battery pack, 10W Constant Power, Certified in CA Title 20 MAEDBS
JP20	Job Pack

Notes

1. Not available with any control or sensor option.
2. Must order with RES7, RES7PDT or RIO sensor. Only available with EZ1 driver.
3. Can only be ordered in conjunction with EZ1, NLTAIR2, RES7/RES7PDT. Occupancy sensor disabled at factory but can be re-enabled upon commissioning.

BLWP

BLWP Wraparound

- Flexibility of performance: Lumen packages from 800 to 20,000 can meet nearly any lighting requirement
- Efficiency in operation: Efficacies up to 140 LPW maximize energy savings and rebates
- Versatility with controls: Control an entire campus or a single room with wired or wireless technology
- Adaptability through mounting: Mount to the ceiling, wall, surface, or suspend to accommodate any design



ORDERING INFORMATION		Specifications subject to change.										Example: BLWP4 40L ADP GZ10 LP840			
Series		Lumens		Lens Diffuser		Voltage		Driver		Color Temperature					
BLWP4	4' LED Wraparound	30L	3,000LM	ADP	Curved, ribbed	(blank)	MVOLT (120-277V)	EZ1	eldoLED dims to 1% (0-10V dimming)	LP830	82CRI, 3000K				
		40L	4,000LM	ADSM	Curved, smooth					LP835	82CRI, 3500K				
		48L	4,800LM			120	120V	GZ10¹	Dims to 10%, (0-10V dimming)	LP840	82CRI, 4000K				
		60L	6,000LM			277	277V			LP930	90CRI, 3000K				
BLWP8	8' LED Wraparound			Diffusers w/trim rings						LP935	90CRI, 3500K				
		40L	4,000LM	ADPT	Curved, ribbed					LP940	90CRI, 4000K				
		60L	6,000LM	ADSMT	Curved, smooth										
nLight Interface		Control		Standby Mode		Options		Finish							
(blank)	no nLight® interface	(blank)	No sensor control	(blank)	Fixture with embedded sensor turns off when unoccupied	E10WLCP	EM Self-Diagnostic battery pack, 10W Constant Power, Certified in CA Title 20 MAEDBS	(blank)	Standard pre-paint white						
NLTAIR2	nLight AIR Generation 2 enabled	RES7	nLight AIR control with PIR integral occupancy sensor and automatic dimming photocell												
		RES7PDT²	nLight AIR microphonics dual technology occupancy sensor with automatic dimming photocell												

Notes

- Not available with any Control or Sensor options
- Must select Lens/Diffuser type with Trim Rings. Requires EZ1 and NLTAIR2 to be specified.



Declare.

Mark Architectural Lighting™

WHISPER

WHSPR Troffer and WHSPR LCTR Troffer

- Offering two design options, fully luminous and luminous center (LCTR), Whisper maintains a quiet ceiling in 2'x2' and 2'x4' sizes
- Gently sloping side panels provide Whisper with depth and appealing angles
- Whether applied in rows or individually, Whisper brightens grid ceilings in offices, schools, hospitals, and other institutional settings with an artful, and simple look
- Whisper participates in Declare

ORDERING INFORMATION

Specifications subject to change.

Example: WHSPR LCTR 2X4 80CRI 35K 4800LM MIN1 MVOLT SWC NLIGHT PDT

Series		Size	CRI		Color Temperature		Lumens		Minimum Dimming		Voltage
WHSPR	Whisper LED	2X2 2' x 2'	80CRI	80 CRI	30K	3000K	2000LM ¹	2000 Nominal Lumens	NODIM ²	Non-dimming	MVOLT 120-277V
WHSPR LCTR	Whisper LED Luminous Center	2X4 2' x 4'	90CRI	90 CRI	35K	3500K	3000LM	3000 Nominal Lumens	MIN1	1% Minimum Dimming	
					40K	4000K	3300LM	3300 Nominal Lumens	MIN10 ³	10% Minimum Dimming	
							4000LM	4000 Nominal Lumens			
							4800LM	4800 Nominal Lumens			
							6000LM	6000 Nominal Lumens			
Center Shielding		Emergency Options		Controls Input		Primary Sensor ⁸		Options			
SWC	Soft White Acrylic	(blank) E10WLCP ⁴	No emergency option Watt battery pack, constant power with self diagnostic. T20 Compliant.	(blank) No control input	ZT ⁵ 0-10V NLIGHT ⁶ nLight Enabled NLTAIR2 ⁷ nLight AIR (wireless enabled)	(blank) No sensor	PIR Occupancy sensor- passive infrared PDT Occupancy sensor- dual technology (passive infrared & microphonics) API PIR occupancy sensor & photocell APD PDT occupancy sensor & photocell	(blank) No options CP Chicago plenum LATC Earthquake clips PWS1856LV ⁹ 6' pre-wire, 3/8" diameter, 18 gauge, 1 circuit w/low voltage purple and gray wires			

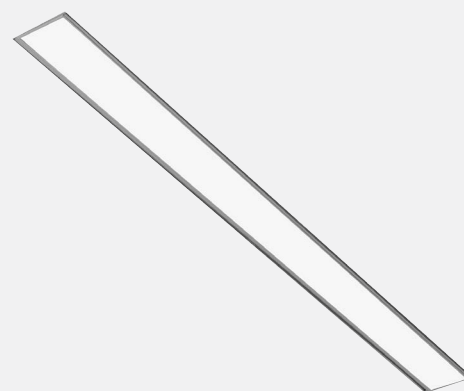
Notes

1. 2000LM output available with WHSPR LCTR 2X4, but not available in WHSPR 2X4
2. If NODIM is selected, do not select a value from the Control Input category
3. MIN10 only available with ZT
4. Test switch located on internal reflector behind diffuser. Glow of test switch visible from below.
5. If paired with a sensor, sensor will be integral but not nLight enabled.
6. Available with MIN1 only. If sensor required, must select PIR or PDT
7. Available with MIN1 only. If sensor required, must select API or APD
8. Available with MIN1 only. All sensors are factory-installed on board sensors.
9. Not available with NODIM, NLIGHT, or NLTAIR2, PIR, PDT, API or APD sensors.

Slot 2 and Slot 4

LED Linear Recessed

- Blending a modern aesthetic with unparalleled performance, SLOT 2 and SLOT 4 LED recessed create simple lines of light
- Energy efficiency, design flexibility and seamless control make this recessed fixture a brilliant addition to any design
- Unparalleled flexibility: Multiple lumen packages and color temperatures available
- Unprecedented performance: Best-in-class efficacy, delivered lumens, and CRI



ORDERING INFORMATION

Specifications subject to change.

Example: SL4L LOP 4FT FLP TG 90CRI 35K 400LMF MIN10 277V NLIGHT

Series	Linear Length Plan	Total Run Length	Fixture Style	Ceiling Trim	CRI	Color Temperature
SL2L Slot 2 LED Linear Recessed	LOP Linear Optimized Plan	2FT 2'	FLP ¹ Flush Lens	FL ² 5/8" Flange (sheetrock)	80CRI 80 CRI	30K 3000K
		3FT 3'	RLP ² Regressed Lens	TG 9/16" or 15/16" Flat or Inverted Tee	90CRI 90 CRI	35K 3500K
SL4L Slot 4 LED Linear Recessed		4FT 4'		GB ³ Trimless (sheetrock)		40K 4000K
		5FT 5'				
		6FT 6'				
		7FT 7'				
		8FT 8'				
		_FT *Specify continuous linear ft in 1 ft increments				

Lumens	Minimum Dimming	Voltage	Emergency Options	Controls Input	Options
400LMF 400 Lumens per FT	NODIM Non-dimming	120 120V	(blank) No emergency option	(blank) ⁴ Non-dim	(blank) No options
600LMF 600 Lumens per FT	MIN10 10% Minimum Dimming	277 277V	_E10WLCP ³ Number of 4ft emergency section(s) with battery pack	ZT 0-10V	CP ⁶ Chicago plenum
800LMF 800 Lumens per FT	MIN1 Constant Current, dimming to 1%		_EC ⁷ 4ft emergency circuit	NLIGHT nLight enabled	
1000LMF 1000 Lumens per FT				NLTAIR2 ⁵ nLight AIR (wireless enabled)	

Primary Zone	Secondary Zone	Tertiary Zone
(blank) Single zone, no sensor	(blank) No additional zones/sensor	(blank) No additional zones/sensors
NS Multi-zone, with no sensor in secondary zone, no sensors	SNS Multi-zone, with no sensor in secondary zone, no sensors	TNS Multi-zone, with no sensor in tertiary zone

Notes

1. Supplied with snap-in lens
2. Not available with SL2L. Supplied with lift and shift lay-in lens. Cannot be installed on vertical surfaces.
3. Not intended for post sheetrock installation
4. Default battery pack is integral, battery pack will be remote on 2' & 3' (RE10WLCP). If 5' or 6' unit, integral battery pack is only available with ZT or NLTAIR2. Battery will be remote with RLP, WW or sensors. Only 1 integral battery pack per unit. CP listing must have an integral battery. Remote batteries are not wet location listed, they may be used with a wet location fixture if the battery itself is mounted in a dry location.
5. Must select with NODIM option
6. Must select MIN1 or DARK. Not available with PDT or ADC
7. CP not available with NLTAIR2



Mark Architectural Lighting™

SPR

Perimeter, Recessed

- SPR LED combines the environmental and cost-saving benefits of solid-state lighting with the popular SP design. The result is a recessed linear wall product that provides an excellent balance of efficiency and performance
- With lengths ranging between 2 ft. to 8 ft., use SPR to create continuous runs of light
- SPR frosted acrylic lens diffuses light for a consistent glow

ORDERING INFORMATION

Specifications subject to change.

Example: SPRLED LOP 24FT6 RLP G9 80CRI 35K 800LMF MIN10 MVOLT

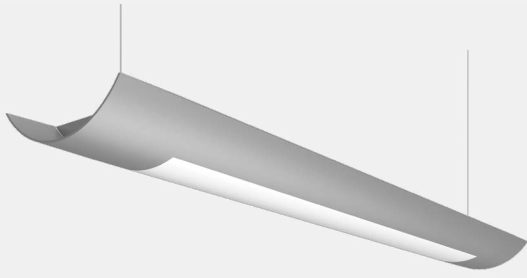
Series		Linear Length Plan		Total Run Length¹		Fixture Style		Ceiling Trim		CRI		Color Temperature	
SPRLED	Fully regressed SPLED	LOP	Linear Optimized Plan	_FT	Provide wall-to-wall dimension to nearest foot	RLP	Regressed Lens	FL G9	5/8" Flange (sheetrock) 9/16" wide inverted tee	80CRI 90CRI	80 CRI 90 CRI	30K 35K 40K	3000K 3500K 4000K

Direct LED Light Output		Minimum Dimming		Voltage		Emergency Options		Controls Input		Options	
400LMF	400 Lumens per FT	NODIM²	Non-dimming	MVOLT	120-277V	(blank)	No emergency option	(blank)	No control input. For use with non-dimming	CP	Chicago plenum
450LMF	450 Lumens per FT	MIN1	Constant current, dimming to 1%	120	120V	_RE10W	Number of emergency sections with remote battery pack	ZT	0-10V	PWS	6' pre-wire 3/8" diameter, 18 gauge
600LMF	600 Lumens per FT	MIN10	10% Minimum Dimming	277	277V	_EC³	# of emergency circuits	NLIGHT	nLight enabled		
800LMF	800 Lumens per FT										
1000LMF	1000 Lumens per FT										

Notes

1. Straight linear runs only in full foot increments only
2. If NODIM is selected, do not select a value from the control input category
3. 5' & 6' sections get 3' on EC. 4', 7' & 8' get 4' on EC





Mark Architectural Lighting™

PILLAR

Indirect/Direct Pendant

- Combining a classic form factor and elevated optical performance, the Pillar cable-suspended pendant adds a minimalist element to classrooms, commercial offices, and hospitality spaces
- Direct and indirect distributions: Up to 1,000 LMF direct and 1,300 LMF indirect
- Design Versatility: Select from 4' and 8' sections with flat end caps
- High performance batwing distribution: Injection-molded optics and straight blade baffle for optimal visual comfort
- Pillar participates in Declare



Declare.

ORDERING INFORMATION

Example: PLLR10ID LLP 32FT MSL8 80CRI 35K 500LMF I700LMF SCT MIN1 MVOLT ZT WHSG F1/36A WHTCY WCRD

Series	Plan	Total Run Length	Max Section Length	CRI	Color Temperature	Direct LED Light Output
PLLR10ID	Pillar Indirect/Direct	LLP Linear Longest Possible LSL Linear Same Length LCB Linear Center Balanced	_FT *Specify continuous run length, in 4' increments. MSL4 4' MSL8 8'	80CRI 80 CRI	30K 3000K 35K 3500K 40K 4000K	500LMF 500 Nominal Lumens per FT 700LMF 700 Nominal Lumens per FT 1000LMF 1000 Nominal Lumens per FT

Indirect LED Light Output	Switching	Minimum Dimming	Voltage	Finish	Emergency Options¹
I700LMF 500 Nominal Lumens per FT I1000LMF 700 Nominal Lumens per FT I1300LMF 1000 Nominal Lumens per FT	SCT Single Circuit DCT Dual Circuit	MIN1 Constant Current, 0-10V dimming to 1%	MVOLT 120-277V	WHSG White, semi-gloss finely textured	(blank) No emergency option _E10WLCP* 4' section with 10 watt battery pack, constant power with self diagnostics, T20 compliant _EC 4ft section with emergency circuit

Controls Input	Primary Sensor²	Secondary Sensor²	End Option	Mounting Type	Overall Suspension³
ZT 0-10V NLIGHT nLight Enabled	(blank) Single zone PDT_ Standalone occupancy daylight sensor ADC_ Standalone daylight dimming sensor APDT_ Dual technology occupancy sensor and daylight dimming sensor APIR_ Passive infrared occupancy sensor and daylight dimming sensor	(blank) Single zone SPDT_ Standalone occupancy daylight sensor SADC_ Standalone daylight dimming sensor SAPDT_ Dual technology occupancy sensor and daylight dimming sensor SAPIR_ Passive infrared occupancy sensor and daylight dimming sensor	FLEP Flat End Cap	F1/ T-bar ceiling (universal mounting bracket) F1A/ T-bar ceiling (UMB with integrated J-box) F2/ Hard ceiling (horizontal J-box)	36A 36" adjustable 72A 72" adjustable 144A 144" adjustable

Canopy Color	Cord Color	Options
WHTCY White canopy (default)	WCRD White cord (default)	(blank) No Options MCS Matching canopy at support for aesthetics MCSJ⁴ Matching canopy for j-box mounting at non-power feed support locations CP Chicago plenum ELH Emergency through wiring w/separate neutrals -single EM feed at opposite end of normal ELS2 Emergency through wiring w/separate neutrals-single EM feed at same end of normal

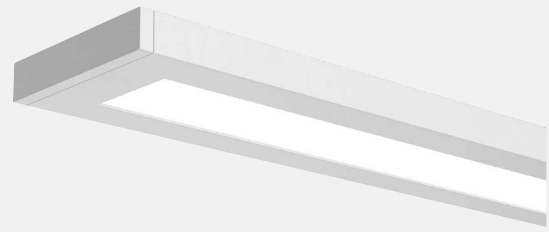
Notes

- Emergency is installed in last 4' of luminaire section, separate feed required
*Not available with CSA or DCT
- Sensors only available on 8' sections
- Measured from ceiling to bottom of luminaire
- Only available with F2 mounting

PLANAR

Indirect/Direct Pendant

- The Planar cable-suspended pendant features a low profile and energy efficiency
- Direct and indirect distributions: Select from 70/30, 50/50, 30/70, or 10/90 indirect/direct intensity ratios
- High performance batwing distribution: Injection-molded optics and straight blade baffle for optimal visual comfort
- Planar participates in Declare



Declare.



ORDERING INFORMATION

Example: PLN8 LLP 32FT MSL8 80CRI 35K ID1000LMF 70/30 MIN1 MVOLT WHSG NLIGHT FLEP F1/36A WHTCY WCRD

Series	Plan	Total Run Length	Max Section Length	CRI	Color Temperature	Indirect/Direct LED Light Output
PLN8	Planar Indirect/Direct	LLP Linear Longest Possible LSL Linear Same Length LCB Linear Center Balanced	MSL4 4' MSL8 8'	80CRI 80 CRI	30K 3000K 35K 3500K 40K 4000K	ID800LMF 800 Nominal Lumens per FT ID1000LMF 1000 Nominal Lumens per FT ID1300LMF 1300 Nominal Lumens per FT

Indirect/Direct Intensity Ratio	Switching	Minimum Dimming	Voltage	Finish	Emergency Options ¹
70/30 70% Up, 30% Down (Standard)	SCT Single Circuit	MIN1 Dims to 1%	MVOLT 120-277V	WHSG White, semi-gloss finely textured	_E10WLCP* 4' Section with 10 Watt Battery Pack, Constant Power with Self Diagnostics, T20 Compliant _EC ² 4ft Section with Emergency Circuit
50/50 50% Up, 50% Down					
30/70 30% Up, 70% Down					
10/90 10% Up, 90% Down					

Controls Input	Primary Sensor	Secondary Sensor	End Option	Mounting Type	Overall Suspension ⁴
ZT 0-10V NLIGHT nLight Enabled	(blank) Single zone, no sensor PDT_ Standalone occupancy daylight sensor ADC_ Standalone daylight dimming sensor APDT_ ³ Dual technology occupancy sensor and daylight dimming sensor	(blank) Single zone SPDT_ Standalone occupancy daylight sensor SADC_ Standalone daylight dimming sensor SAPDT_ ³ Dual technology occupancy sensor and daylight dimming sensor	FLEP Flat End Cap	F1/ T-bar ceiling (universal mounting bracket) F1A/ T-bar ceiling (UMB with integrated J-box) F2/ Hard ceiling (horizontal J-box)	36A 36" adjustable 72A 72" adjustable 144A 144" adjustable

Canopy Color	Cord Color	Dust Cover	Options
WHTCY White canopy (default)	WCRD White cord (default)	DC Dust Cover	(blank) No Options MCS Matching canopy at support for aesthetics MCSJ ⁵ Matching canopy for j-box mounting at non-power feed support locations CP Chicago plenum ELH Emergency through wiring w/separate neutrals -single EM feed at opposite end of normal ELS2 Emergency through wiring w/separate neutrals-single EM feed at same end of normal

Notes

- Emergency is installed in last 4' of luminaire section
- *E10WLCP not available with CSA
- If 4FT MSL4 EC is needed, consult factor , if MSL8, must select 2EC
- Available with ZT and NLIGHT
- Measured from ceiling to bottom of luminaire
- Only available with F2 mounting



Declare.



Mark Architectural Lighting™

S2PD

SLOT 2 Pendant Direct

- Available with wired or wireless networked embedded controls by nLight, addressing requirements of Luminaire Level Lighting Control (LLLC). A nLight® Wired or nLight AIR sensor or controls device is embedded within this Luminaire.
- Delivering 300-1500 LMF (nominal)
- Up to 117 Lumens per Watt
- SLOT 2 participates in Declare

ORDERING INFORMATION

Example: S2PD LLP 32FT MSL8 80CRI 35K 800LMF SCT MIN1 FLL MVOLT WHTT ZT F1/36A RDCY WHTCY WCRD

Series		Linear Plan		Total Run Length		Max Section Length		CRI		Color Temperature		Lumen Output			
S2PD	Slot 2 Pendant Direct (formerly S2LD)	LLP	Linear Longest Possible	_FT	Specify continuous linear feet in 1 foot increments	MSL2	2FT Length	80CRI	80 CRI	30K	3000K	300LMF	300 Lumens per Foot		
						MSL3	3FT Length			35K	3500K	400LMF	400 Lumens per Foot		
		LCB	Linear Center Balanced			MSL4	4FT Length	40K	4000K	600LMF	600 Lumens per Foot				
						MSL5	5FT Length			800LMF	800 Lumens per Foot				
		LSL	Longest Same Length			MSL6	6FT Length			1000LMF	1000 Lumens per Foot				
						MSL7	7FT Length			1200LMF	1200 Lumens per Foot				
						MSL8	8FT Length					1400LMF	1400 Lumens per Foot		
												1500LMF	1500 Lumens per Foot		

Switching		Minimum Dimming Level		Direct Shielding		Voltage		Finish		Emergency Options		Control Input	
SCT	Single Circuit	NODIM	Non Dimming	FLL	Flush lens	MVOLT	120-277V 120 120V 277 277V	WHTT	White (satin)	(blank)	No secondary power options	(blank)	Non-Dimming
		MIN1	Constant current, dimming to 1%							_E10WLCP ¹	# of 10W battery packs, constant power, self diagnostics, T20 compliant	ZT	0-10V
		MIN10	Constant current, dimming to 10%							_EC ²	# of emergency circuits	NLIGHT	nLight Wired
												NLTAIR2 ³	nLight Air 2 Wireless Enabled

Primary Zone		Secondary Zone		Tertiary Zone		Mounting Type		Suspension Length		Canopy Form	
(blank)	No sensors	(blank)	No sensors or secondary zone	(blank)	No tertiary zone	F1/	T-Bar ceiling with universal mounting bracket	36A	36" Adjustable	RDCY	Round Canopy
NS_	Primary zone with no sensor (specify length in feet)	SNS_	Secondary zone with no sensor (specify length in feet)	TNS_	Tertiary zone (specify length in feet)	F1A/	T-Bar ceiling with universal mounting bracket & integrated J-Box	72A	72" Adjustable		
						F2/	Hard ceiling	144A	144" Adjustable		

Canopy Color		Cord Color	
WHTCY	White Canopy	WCRD	White Cord

Notes

1. Not available in units under 4'. When ordered with NLTAIR2, it is only available in units 7'-8'.
2. Powers entire unit.
3. Can be used as a normal power sensing device for nLight AIR devices and luminaires with EM emergency options. It is not available with NODIM. Not available on units under 4'.

S2PID

SLOT 2 Pendant Direct | Indirect

- Available with wired or wireless networked embedded controls by nLight, addressing requirements of Luminaire Level Lighting Control (LLLC). A nLight Wired or nLight AIR sensor or controls device is embedded within this Luminaire.
- Delivering 300-1500 LMF (nominal, direct)
- Delivering 300-1500 LMF (nominal, indirect)
- SLOT 2 participates in Declare



Declare.



ORDERING INFORMATION

Example: S2PID LLP 32FT MSL8 90CRI 35K 800LMF I90CRI I35K I800LMF SCT MIN1 FLL MVOLT WHTT ZT F1/36A RDCY WHTCY WCRD

Series		Linear Plan		Total Run Length		Max Section Length		Direct Light Source CRI		Direct Color Temperature		Direct Lumen Output			
S2PID	Slot 2 Pendant Indirect/ Direct (formerly S2LID)	LLP	Linear Longest Possible	_FT	Specify continuous linear feet in 1 foot increments	MSL2	2FT Length	80CRI	80 CRI	30K	3000K	300LMF	300 Lumens per Foot		
						MSL3	3FT Length	90CRI	90 CRI	35K	3500K	400LMF	400 Lumens per Foot		
						MSL4	4FT Length			40K	4000K	600LMF	600 Lumens per Foot		
						MSL5	5FT Length					800LMF	800 Lumens per Foot		
		LCB	Linear Center Balanced			MSL6	6FT Length					1000LMF	1000 Lumens per Foot		
						MSL7	7FT Length					1200LMF	1200 Lumens per Foot		
						MSL8	8FT Length					1400LMF	1400 Lumens per Foot		
												1500LMF	1500 Lumens per Foot		
		LSL	Longest Same Length												

Indirect Light Source CRI		Indirect Color Temperature		Indirect Lumen Output		Indirect Distribution		Switching		Minimum Dimming Level		Direct Shielding	
I80CRI	80 CRI	I30K	3000K	I300LMF	300 Lumens per Foot	(blank)	Lambertian	SCT	Single Circuit	NODIM	Non Dimming	FLL	Flush lens
I90CRI	90 CRI	I35K	3500K	I400LMF	400 Lumens per Foot	BW	Batwing distribution			MIN1	Constant current, dimming to 1%		
		I40K	4000K	I600LMF	600 Lumens per Foot					MIN10	Constant current, dimming to 10%		
				I800LMF	800 Lumens per Foot								
				I1000LMF	1000 Lumens per Foot								
				I1200LMF	1200 Lumens per Foot								
				I1400LMF	1400 Lumens per Foot								
				I1500LMF	1500 Lumens per Foot								

Voltage		Finish		Emergency Options		Control Input		Primary Zone		Secondary Zone		Tertiary Zone	
MVOLT	120-277V	WHTT	White (satin)	(blank)	No secondary power options	(blank)	Non-Dimming	(blank)	No sensors	(blank)	No sensors or secondary zone	(blank)	No tertiary zone
120	120V			_E10WLCPI	# of 10W battery packs, constant power, self diagnostics, T20 compliant	ZT	0-10V	NS_	Primary zone with no sensor (specify length in feet)	SNS_	Secondary zone with no sensor (specify length in feet)	TNS_	Tertiary zone (specify length in feet)
277	277V			_EC ²	# of emergency circuits	NLIGHT	nLight Wired						
						NLTAIR2 ³	nLight Air 2 Wireless Enabled						

Mounting Type		Suspension Length		Canopy Form		Canopy Color		Cord Color		Notes
F1/	T-Bar ceiling with universal mounting bracket	36A	36" Adjustable	RDCY	Round Canopy	WHTCY	White Canopy	WCRD	White Cord	
F1A/	T-Bar ceiling with universal mounting bracket & integrated J-Box	72A	72" Adjustable							
F2/	Hard ceiling	144A	144" Adjustable							

Notes

- Not available in units under 7'.
- Powers entire unit.
- Can be used as a normal power sensing device for nLight AIR devices and luminaires with EM emergency options. It is not available with NODIM. Not available on units under 4'.



S4PD

SLOT 4 Pendant Direct

- Available with wired or wireless networked embedded controls by nLight, addressing requirements of Luminaire Level Lighting Control (LLLC). A nLight Wired or nLight AIR sensor or controls device is embedded within this Luminaire.
- Delivering 300-1500 LMF (nominal, direct)
- Up to 126 Lumens per Watt
- SLOT 4 participates in Declare



Declare.



ORDERING INFORMATION

Example: S4PD LLP 32FT MSL8 90CRI 35K 800LMF MIN1 SCT MIN1 FLL MVOLT WHTT ZT F1/36A RDCY WHTCY WCRD

Series		Linear Plan		Total Run Length		Max Section Length		CRI		Color Temperature		Lumen Output	
S4PD	Slot 4 Pendant Direct (formerly S4LD)	LLP	Linear Longest Possible	_FT	Specify continuous linear feet in 1 foot increments	MSL2	2FT Length	80CRI	80 CRI	30K	3000K	300LMF	300 Lumens per Foot
						MSL3	3FT Length	90CRI	90 CRI	35K	3500K	400LMF	400 Lumens per Foot
		LCB	Linear Center Balanced			MSL4	4FT Length			40K	4000K	600LMF	600 Lumens per Foot
						MSL5	5FT Length					800LMF	800 Lumens per Foot
		LSL	Longest Same Length			MSL6	6FT Length					1000LMF	1000 Lumens per Foot
						MSL7	7FT Length					1200LMF	1200 Lumens per Foot
						MSL8	8FT Length					1400LMF	1400 Lumens per Foot
												1500LMF	1500 Lumens per Foot

Switching		Minimum Dimming Level		Direct Shielding		Voltage		Finish		Emergency Options		Control Input	
SCT	Single Circuit	NODIM	Non Dimming	FLL	Flush lens	MVOLT	120-277V	WHTT	White (satin)	(blank)	No secondary power options	(blank)	Non-Dimming
		MIN1	Constant current, dimming to 1%				120 120V			_E10WLCP ¹	# of 10W battery packs, constant power, self diagnostics, T20 compliant	ZT	0-10V
		MIN10	Constant current, dimming to 10%				277 277V			_EC	# of emergency circuits	NLIGHT	nLight Wired
												NLTAIR2 ²	nLight Air 2 Wireless Enabled

Primary Zone		Secondary Zone		Tertiary Zone		Mounting Type		Suspension Length		Canopy Form	
(blank)	No sensors	(blank)	No sensors or secondary zone	(blank)	No tertiary zone	F1/	T-Bar ceiling with universal mounting bracket	36A	36" Adjustable	RDCY	Round Canopy
NS_	Primary zone with no sensor (specify length in feet)	SNS_	Secondary zone with no sensor (specify length in feet)	TNS_	Tertiary zone (specify length in feet)	F1A/	T-Bar ceiling with universal mounting bracket & integrated J-Box	72A	72" Adjustable		
						F2/	Hard ceiling	144A	144" Adjustable		

Canopy Color		Cord Color	
WHTCY	White Canopy	WCRD	White Cord

Notes

- Not available in units under 4'. When ordered with NLTAIR2, it is only available in units 7'-8'.
- Can be used as a normal power sensing device for nLight AIR devices and luminaires with EM emergency options. It is not available with NODIM. Not available on units under 4'.



Declare.



Mark Architectural Lighting™

S4PID

SLOT 4 Pendant Direct | Indirect

- Available with wired or wireless networked embedded controls by nLight, addressing requirements of Luminaire Level Lighting Control (LLLC). A nLight Wired or nLight AIR sensor or controls device is embedded within this Luminaire.
- Delivering 300-1500 LMF (nominal, direct)
- Delivering 300-1500 LMF (nominal, indirect)
- SLOT 4 participates in Declare

ORDERING INFORMATION

Example: S4PID LLP 32FT MSL8 90CRI 35K 800LMF I90CRI I35K I800LMF SCT MIN1 FLL MVOLT WHTT ZT F1/36A RDCY WHTCY WCRD

Series		Linear Plan		Total Run Length		Max Section Length		Direct Light Source CRI		Direct Color Temperature		Direct Lumen Output	
S4PID	Slot 4 Pendant Indirect/Direct (formerly S4LID)	LLP	Linear Longest Possible	_FT	Specify continuous linear feet in 1 foot increments	MSL2	2FT Length	80CRI	80 CRI	30K	3000K	300LMF	300 Lumens per Foot
						MSL3	3FT Length	90CRI	90 CRI	35K	3500K	400LMF	400 Lumens per Foot
						MSL4	4FT Length			40K	4000K	600LMF	600 Lumens per Foot
		LCB	Linear Center Balanced			MSL5	5FT Length					800LMF	800 Lumens per Foot
						MSL6	6FT Length					1000LMF	1000 Lumens per Foot
						MSL7	7FT Length					1200LMF	1200 Lumens per Foot
		LSL	Longest Same Length			MSL8	8FT Length					1400LMF	1400 Lumens per Foot
												1500LMF	1500 Lumens per Foot

Indirect Light Source CRI		Indirect Color Temperature		Indirect Lumen Output		Indirect Distribution		Switching		Minimum Dimming Level		Direct Shielding	
I80CRI	80 CRI	I30K	3000K	I300LMF	300 Lumens per Foot	(blank)	Lambertian	SCT	Single Circuit	NODIM	Non Dimming	FLL	Flush lens
I90CRI	90 CRI	I35K	3500K	I400LMF	400 Lumens per Foot	BW	Batwing distribution			MIN1	Constant current, dimming to 1%		
		I40K	4000K	I600LMF	600 Lumens per Foot					MIN10	Constant current, dimming to 10%		
				I800LMF	800 Lumens per Foot								
				I1000LMF	1000 Lumens per Foot								
				I1200LMF	1200 Lumens per Foot								
				I1400LMF	1400 Lumens per Foot								
				I1500LMF	1500 Lumens per Foot								

Voltage		Finish		Emergency Options		Control Input		Primary Zone		Secondary Zone		Tertiary Zone	
MVOLT	120-277V	WHTT	White (satin)	(blank)	No secondary power options	(blank)	Non-Dimming	(blank)	No sensors	(blank)	No sensors or secondary zone	(blank)	No tertiary zone
120	120V			_E10WLCP ¹	# of 10W battery packs, constant power, self diagnostics, T20 compliant	ZT	0-10V	NS_	Primary zone with no sensor (specify length in feet)	SNS_	Secondary zone with no sensor (specify length in feet)	TNS_	Tertiary zone (specify length in feet)
277	277V			_EC	# of Emergency Circuits	NLIGHT	nLight Wired						
						NLTAIR2 ²	nLight Air 2 Wireless Enabled						

Mounting Type		Suspension Length		Canopy Form		Canopy Color		Cord Color	
F1/	T-Bar ceiling with universal mounting bracket	36A	36" Adjustable	RDCY	Round Canopy	WHTCY	White Canopy	WCRD	White Cord
F1A/	T-Bar ceiling with universal mounting bracket & integrated J-Box	72A	72" Adjustable						
F2/	Hard ceiling	144A	144" Adjustable						

Notes

- Not available in units under 7'.
- Can be used as a normal power sensing device for nLight AIR devices and luminaires with EM emergency options. It is not available with NODIM. Not available on units under 4'.





Industrial



Industrial

30 High Bays

33 Vapor Tight



Lithonia Lighting®

CPHB

Compact Pro™ LED High Bay

- 12,000 to 60,000 lumens
- Ultra Compact - up to 50% smaller than the typical high bay, while illuminating the same amount of space as fixtures four times the length
- Contractor-friendly job pack design allows for 30% reduction in labor time and helps minimize packaging waste by 75%
- Glare reduction optics featuring WhiteOptics® technology allows for maximum light output while reducing glare 6kV ANSI Surge, 55°C ambient operation >135 lumens per watt
- Ideal solution for warehouse, general open spaces, gymnasium, and light-duty industrial spaces

ORDERING INFORMATION

Specifications subject to change.

Example: CPHB 24000LM SEF GCL MD 120 GZ10 40K 80CRI LSXR6 DWH

Series		Lumens		Performance Package		Lens		Distribution		Voltage		Driver	
CPHB	Compact Pro High Bay	12000LM	12,000LM	SEF	Standard Efficiency	GCL	Glare Control Lens	MD	Medium	120	120V	GZ10	0-10V dimming
		15000LM	15,000LM	HEF	High Efficiency			ND	Narrow	208	208V		
		18000LM	18,000LM					WD	Wide	240	240V		
		24000LM	24,000LM							277	277V		
		30000LM	30,000LM							347	347V		
		36000LM	36,000LM							480	480V		
		48000LM	48,000LM							HVOLT	347-480V		
		60000LM	60,000LM							MVOLT	120-277V		

Color Temperature		CRI		Options						Finish	
40K	4000K	70CRI	70 CRI	nLight Air Wireless Controls		Individual Controls		Emergency & Cord Sets		DWH	Gloss White
50K	5000K	80CRI	80 CRI	NLTAIR2 RLSXR6	nLight AIR (wireless) gen 2 control device with high mount occupancy and daylight sensor	LSXR6	360° integral high mount motion sensor with standard on/off operation	E10WCP	10W emergency battery pack, Certified in CA Title 20 MAEDBS		
						LSXR6 HL	360° integral high mount motion sensor with high/low/(off) occupancy operation. For High/Low/(never off), bypass relay	E15WMCP	15W emergency battery pack, Certified in CA Title 20 MAEDBS		
				NLTAIR2 RMSOD45	Embedded nLight AIR (wireless) gen 2 control device with high mount occupancy and daylight sensor	LSXR6 ADC	360° integral high mount motion sensor with dimming & switching photocell	IE20WCPHE	10W emergency battery pack, Certified in CA Title 20 MAEDBS		
						HLN45 HL	360° integral high mount motion sensor with high/low (off) occupancy detection; Bluetooth enabled	OCS	RELOC® OnePass selectable cable 6' installed		
								OCS4C	RELOC® OnePass selectable cable 6' installed		
								OCS10	RELOC® OnePass selectable cable 10' installed		
								OCS15	RELOC® OnePass selectable cable 15' installed		
						HLN45 HL ADC	360° integral high mount motion sensor with high/low (off) occupancy operation with photocell; Bluetooth enabled	CNPW	6' white cord, no plug		
								CNPW12FT	12' white cord, no plug		
								CNPW15FT	15' white cord, no plug		
								CPTLW	6' white damp location cord with twist-lock plug (voltage will match fixture)		

Notes

*For High aisle mount sensors, replace "45" with "45A." Ex: NLTAIR2 RMSOD45A For High Mount AISLEWAY sensors, replace "6" in nomenclature with "50." Ex: LSXR50 HL

1. When HVOLT, 347, and 480 are ordered fixture utilizes fixture back pack. Not available with battery options when 347, 480 or HVOLT are ordered.

I-BEAM® Configurable LED High Bay

- The most popular high bay in North America and an ideal one-for-one replacement for conventional HID and fluorescent high bay systems
- Standard 6KV Surge Protection tested to ANSI Industrial standards
- Compact form factor and fewer components make it easier to handle during installation, while high-efficiency options enable mounting heights up to 60 feet
- 12,000 to 72,000 lumens with high-ambient options up to 131°F (55°C) and high efficiency options greater than 180+ LPW
- Available with wireless and individual controls to increase your energy savings
- Designed for applications such as warehouses, manufacturing facilities, gymnasiums and other large indoor spaces



ORDERING INFORMATION

Specifications subject to change.

Example: IBG 24000LM SEF AFL GND MVOLT GZ10 40K 80CRI DWH

Series	Lumens	Performance Package	Lens	Distribution	Voltage	Driver	Color Temperature
IBG I-BEAM® IBG Configurable LED High Bay	12000LM	SEF Standard efficiency	ACL Clear Acrylic	GND General	120 120V	GZ10 0-10V dimming	40K 4000K
	15000LM	HEF Premium efficiency	AFL Acrylic Frosted	ND Narrow	208 208V		50K 5000K
	18000LM		ATL Acrylic Textured	WD Wide	240 240V		
	24000LM		L/LENS Less Lens		277 277V		
	30000LM				347 347V		
	36000LM				480 480V		
	48000LM				HVOLT 347-480V		
	60000LM				MVOLT 120-277V		
	72000LM						

CRI	Options								
70CRI 70 CRI 80CRI 80 CRI	<div>Emergency Batteries</div> <div>Flexible Systems</div> <div>Cord Sets</div> <div>nLight AIR Wireless Controls</div>								
	<div>IE20WCPHE Iota 20W emergency battery pack, Certified in CA Title 20 MAEDBS</div> <div>OCS RELOC® OnePass® 6FT installed</div> <div>CNPW 6FT white cord, no plug</div> <div>NLTAIR2 nLight AIR (wireless) gen 2 control device with high mount occupancy and daylight sensor</div> <tr> <td></td><td> <div>IE30WCPHE Iota 30W emergency battery pack, Certified in CA Title 20 MAEDBS</div> <div>OCS10 RELOC® OnePass® 10FT installed</div> <div>CPTLW 6' white damp location cord with twistlock plug (voltage will match fixture)</div> <div>NLTAIR2 Embedded nLight AIR (wireless) gen 2 control device with high mount occupancy and daylight sensor</div> <tr> <td></td><td> <div></div> <div>OCS15 RELOC® OnePass® 15FT installed</div> <div></div> <div>NLTAIR2 RMSOD45 Embedded nLight AIR (wireless) gen 2 control device with high aisle mount occupancy and daylight sensor</div> <tr> <td></td><td> <div></div> <div>OCS4C RELOC® OnePass® selectable cable 6' installed</div> <div></div> <div>NLTAIR2 RMSOD45A Embedded nLight AIR (wireless) gen 2 control device with high aisle mount occupancy and daylight sensor</div> <tr> <td></td><td> <div></div> <div></div> <div></div> <div>NLTAIR2 RIO nLight AIR (wireless) gen 2 control device (dimming & switching)</div> </td></tr> </td></tr> </td></tr></td></tr>		<div>IE30WCPHE Iota 30W emergency battery pack, Certified in CA Title 20 MAEDBS</div> <div>OCS10 RELOC® OnePass® 10FT installed</div> <div>CPTLW 6' white damp location cord with twistlock plug (voltage will match fixture)</div> <div>NLTAIR2 Embedded nLight AIR (wireless) gen 2 control device with high mount occupancy and daylight sensor</div> <tr> <td></td><td> <div></div> <div>OCS15 RELOC® OnePass® 15FT installed</div> <div></div> <div>NLTAIR2 RMSOD45 Embedded nLight AIR (wireless) gen 2 control device with high aisle mount occupancy and daylight sensor</div> <tr> <td></td><td> <div></div> <div>OCS4C RELOC® OnePass® selectable cable 6' installed</div> <div></div> <div>NLTAIR2 RMSOD45A Embedded nLight AIR (wireless) gen 2 control device with high aisle mount occupancy and daylight sensor</div> <tr> <td></td><td> <div></div> <div></div> <div></div> <div>NLTAIR2 RIO nLight AIR (wireless) gen 2 control device (dimming & switching)</div> </td></tr> </td></tr> </td></tr>		<div></div> <div>OCS15 RELOC® OnePass® 15FT installed</div> <div></div> <div>NLTAIR2 RMSOD45 Embedded nLight AIR (wireless) gen 2 control device with high aisle mount occupancy and daylight sensor</div> <tr> <td></td><td> <div></div> <div>OCS4C RELOC® OnePass® selectable cable 6' installed</div> <div></div> <div>NLTAIR2 RMSOD45A Embedded nLight AIR (wireless) gen 2 control device with high aisle mount occupancy and daylight sensor</div> <tr> <td></td><td> <div></div> <div></div> <div></div> <div>NLTAIR2 RIO nLight AIR (wireless) gen 2 control device (dimming & switching)</div> </td></tr> </td></tr>		<div></div> <div>OCS4C RELOC® OnePass® selectable cable 6' installed</div> <div></div> <div>NLTAIR2 RMSOD45A Embedded nLight AIR (wireless) gen 2 control device with high aisle mount occupancy and daylight sensor</div> <tr> <td></td><td> <div></div> <div></div> <div></div> <div>NLTAIR2 RIO nLight AIR (wireless) gen 2 control device (dimming & switching)</div> </td></tr>		<div></div> <div></div> <div></div> <div>NLTAIR2 RIO nLight AIR (wireless) gen 2 control device (dimming & switching)</div>
	<div>IE30WCPHE Iota 30W emergency battery pack, Certified in CA Title 20 MAEDBS</div> <div>OCS10 RELOC® OnePass® 10FT installed</div> <div>CPTLW 6' white damp location cord with twistlock plug (voltage will match fixture)</div> <div>NLTAIR2 Embedded nLight AIR (wireless) gen 2 control device with high mount occupancy and daylight sensor</div> <tr> <td></td><td> <div></div> <div>OCS15 RELOC® OnePass® 15FT installed</div> <div></div> <div>NLTAIR2 RMSOD45 Embedded nLight AIR (wireless) gen 2 control device with high aisle mount occupancy and daylight sensor</div> <tr> <td></td><td> <div></div> <div>OCS4C RELOC® OnePass® selectable cable 6' installed</div> <div></div> <div>NLTAIR2 RMSOD45A Embedded nLight AIR (wireless) gen 2 control device with high aisle mount occupancy and daylight sensor</div> <tr> <td></td><td> <div></div> <div></div> <div></div> <div>NLTAIR2 RIO nLight AIR (wireless) gen 2 control device (dimming & switching)</div> </td></tr> </td></tr> </td></tr>		<div></div> <div>OCS15 RELOC® OnePass® 15FT installed</div> <div></div> <div>NLTAIR2 RMSOD45 Embedded nLight AIR (wireless) gen 2 control device with high aisle mount occupancy and daylight sensor</div> <tr> <td></td><td> <div></div> <div>OCS4C RELOC® OnePass® selectable cable 6' installed</div> <div></div> <div>NLTAIR2 RMSOD45A Embedded nLight AIR (wireless) gen 2 control device with high aisle mount occupancy and daylight sensor</div> <tr> <td></td><td> <div></div> <div></div> <div></div> <div>NLTAIR2 RIO nLight AIR (wireless) gen 2 control device (dimming & switching)</div> </td></tr> </td></tr>		<div></div> <div>OCS4C RELOC® OnePass® selectable cable 6' installed</div> <div></div> <div>NLTAIR2 RMSOD45A Embedded nLight AIR (wireless) gen 2 control device with high aisle mount occupancy and daylight sensor</div> <tr> <td></td><td> <div></div> <div></div> <div></div> <div>NLTAIR2 RIO nLight AIR (wireless) gen 2 control device (dimming & switching)</div> </td></tr>		<div></div> <div></div> <div></div> <div>NLTAIR2 RIO nLight AIR (wireless) gen 2 control device (dimming & switching)</div>		
	<div></div> <div>OCS15 RELOC® OnePass® 15FT installed</div> <div></div> <div>NLTAIR2 RMSOD45 Embedded nLight AIR (wireless) gen 2 control device with high aisle mount occupancy and daylight sensor</div> <tr> <td></td><td> <div></div> <div>OCS4C RELOC® OnePass® selectable cable 6' installed</div> <div></div> <div>NLTAIR2 RMSOD45A Embedded nLight AIR (wireless) gen 2 control device with high aisle mount occupancy and daylight sensor</div> <tr> <td></td><td> <div></div> <div></div> <div></div> <div>NLTAIR2 RIO nLight AIR (wireless) gen 2 control device (dimming & switching)</div> </td></tr> </td></tr>		<div></div> <div>OCS4C RELOC® OnePass® selectable cable 6' installed</div> <div></div> <div>NLTAIR2 RMSOD45A Embedded nLight AIR (wireless) gen 2 control device with high aisle mount occupancy and daylight sensor</div> <tr> <td></td><td> <div></div> <div></div> <div></div> <div>NLTAIR2 RIO nLight AIR (wireless) gen 2 control device (dimming & switching)</div> </td></tr>		<div></div> <div></div> <div></div> <div>NLTAIR2 RIO nLight AIR (wireless) gen 2 control device (dimming & switching)</div>				
	<div></div> <div>OCS4C RELOC® OnePass® selectable cable 6' installed</div> <div></div> <div>NLTAIR2 RMSOD45A Embedded nLight AIR (wireless) gen 2 control device with high aisle mount occupancy and daylight sensor</div> <tr> <td></td><td> <div></div> <div></div> <div></div> <div>NLTAIR2 RIO nLight AIR (wireless) gen 2 control device (dimming & switching)</div> </td></tr>		<div></div> <div></div> <div></div> <div>NLTAIR2 RIO nLight AIR (wireless) gen 2 control device (dimming & switching)</div>						
	<div></div> <div></div> <div></div> <div>NLTAIR2 RIO nLight AIR (wireless) gen 2 control device (dimming & switching)</div>								

Options	Primary Finish
Individual Controls*	DWH Gloss white
HLN45 HL 360° integral high mount motion sensor with High/Low (Off) occupancy detection; Bluetooth enabled	
HLN45 ADC 360° integral high mount motion sensor. High/Low/(Off) occupancy operation with photocell; Bluetooth enabled	
LSXR6 HL 360° integral high mount motion sensor with High/Low/(Off) occupancy operation (For High/Low only, bypass relay	
LSXR6 ADC 360° integral high mount motion sensor with On/Off occupancy operation with auto dimming photocell	
LSXR6 360° integral high mount motion sensor with standard On/Off operation	

Notes

*For integral aisle mount sensors, replace "45" in nomenclature with "45A." For high mount aisleway sensors, replace "6" in nomenclature with "50".

The Bluetooth® word mark and logos are registered trademarks owned by Bluetooth SIG, Inc. and any use of such marks by Acuity Brands is under license. Other trademarks and trade names are those of their respective owners.



Lithonia Lighting®

IBGN

I-BEAM® Configurable LED High Bay, Narrow Body

- The most popular high bay in North America and an ideal one-for-one replacement for conventional HID and fluorescent high bay systems, in a narrow form
- 18,000 to 36,000 lumens with high-ambient options up to 131°F (55°C) and high efficiency options up to 180+ LPW
- Standard (150+LPW) and premium efficiency options (180+ LPW)
- Emergency battery backup available
- For application in warehousing, manufacturing, general industrial & large open spaces

ORDERING INFORMATION

Specifications subject to change.

Example: IBGN 24000LM SEF AFL GND MVOLT GZ10 40K 80CRI DWH

Series		Lumens		Performance Package		Lens		Distribution		Voltage		Driver	
IBGN	I-BEAM® IBG Configurable LED High Bay, Narrow Body	18000LM	18,000LM	SEF	Standard efficiency	ACL	Clear Acrylic	GND	General	120	120V	GZ10	0-10V dimming
		24000LM	24,000LM	HEF	Premium efficiency	AFL	Acrylic Frosted	ND	Narrow	208	208V		
		30000LM	30,000LM			L/LENS	Less Lens	WD	Wide	240	240V		
		36000LM	36,000LM							277	277V		
										347	347V		
										480	480V		
										HVOLT	347-480V		
										MVOLT	120-277V		

Color Temperature		CRI		Options									
40K	4000K	70CRI	70 CRI	Emergency Batteries		Flexible Systems		Cord Sets		nLight AIR Wireless Controls			
50K	5000K	80CRI	80 CRI										
				IE20WCPHE	Iota 20W emergency battery pack, Constant Power, High Efficiency, Certified in CA Title 20 MAEDBS	OCS	RELOC® OnePass® 6FT installed	CNPW	6FT white cord, no plug	NLTAIR2 RLSXR6	nLight AIR (wireless) gen 2 control device with high mount occupancy and daylight sensor		
				IE30WCPHE	Iota 30W emergency battery pack, Constant Power, High Efficiency, Certified in CA Title 20 MAEDBS	OCS10	RELOC® OnePass® 10FT installed	CPTLW	Cord with plug, twist lock, 15 amp, 18 gauge, 3 conductor, white, damp location, 6 feet	NLTAIR2 RMSOD45	Embedded nLight AIR (wireless) gen 2 control device with high mount occupancy and daylight sensor		
										NLTAIR2 RMSOD45A	Embedded nLight AIR (wireless) gen 2 control device with high aisle mount occupancy and daylight sensor		
										NLTAIR2 RIO	nLight AIR (wireless) gen 2 control device (dimming & switching)		

Options										Primary Finish	
Individual Controls*										DWH	Gloss white
HLN45 HL	360° integral high mount motion sensor with High/Low (Off) occupancy detection; Bluetooth enabled										
HLN45 ADC	360° integral high mount motion sensor. High/Low/(Off) occupancy operation with photocell; Bluetooth enabled										
LSXR6 HL	360° integral high mount motion sensor with High/Low/(Off) occupancy operation (For High/Low only, bypass relay										
LSXR6 ADC	360° integral high mount motion sensor with On/Off occupancy operation with auto dimming photocell										
LSXR6	360° integral high mount motion sensor with standard On/Off operation										

Notes

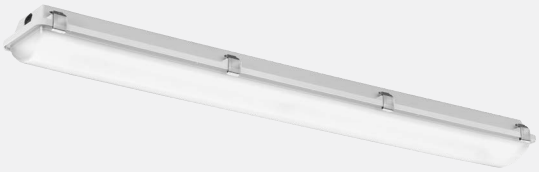
*For integral aisle mount sensors, replace "45" in nomenclature with "45A." For high mount aisleway sensors, replace "6" in nomenclature with "50" Ex: NLTAIR2 RMSOD45A.

The Bluetooth® word mark and logos are registered trademarks owned by Bluetooth SIG, Inc. and any use of such marks by Acuity Brands is under license. Other trademarks and trade names are those of their respective owners.

FEM LED

FEM LED Linear

- Available in 2-foot (L24), 4-foot (L48), and 8-foot (L96) lengths
- Sleek appearance, low-profile design and numerous options make this an ideal choice for parking garages, industrial facilities, retail stores, garden centers, food service, and airports
- Lumen packages ranging from 2,000 to 24,000 lumens with efficacy up to 170LPW
- Multiple variations of both polycarbonate and acrylic lenses available



65
IP RATED

66
IP RATED

67
IP RATED

ORDERING INFORMATION

Specifications subject to change.

Example: FEM L48 4000LM IMAFL WD MVOLT GZ10 40K 80CRI

Series	Length		Nominal Lumens		Diffuser		Distribution		Voltage		Driver	
FEM	L48	48"	3000LM	3,000LM	IMAFL	Acrylic, lineal ribbed frosted lens	MD	Medium	MVOLT	120-277V	GZ10	0-10V dimming
			4000LM	4,000LM			WD	Wide	120	120V		
			6000LM	6,000LM	LPAFL	Acrylic, low profile frosted lens			277	277V		
			8000LM	8,000LM	LPACL	Acrylic, low profile clear lens						
	L96	96"	9000LM	9,000LM	LPPCL	Polycarbonate, low profile clear lens						
			15000LM	15,000LM								
			18000LM	18,000LM	LPPFL	Polycarbonate, low profile frosted lens						
Color Temperature		CRI		Options		Individual Controls						
35K	3500K	80CRI	80 CRI	E10WMCP	EM Self-Diagnostic battery pack, MVOLT, 10W, Constant Power, Certified in CA Title 20 MAEDBS	SBOR10	360° low mount sensor, (8-15' mounting heights), outdoor PIR, ON/OFF occupancy					
40K	4000K					NLTAIR2 RSBOR10	nLight® AIR Generation 2 enabled, 360° low mount sensor (8-15' heights)					
50K	5000K			STSL	Stainless steel latches	NLTAIR2 RIO	nLight® AIR Generation 2 enabled, fixture embedded network interface, 0-10V dimming output					

A modern conference room with a large dark table, chairs, and a curved ceiling with recessed lighting. The room features wood-paneled walls and a large screen. A green banner with the word "Downlighting" is overlaid on the image.

Downlighting



Downlighting



Gotham®

Incito™ 2" Round Downlight

High Center Beam LED Open Downlight

- Incito™ high intensity distributions provide narrow field angles to create sharp contrast with crisp highlights and deep shadows for a dramatic layer of light
- Because of its size, it can be mounted in very tight spaces without compromising exceptional output of up to 2,000 lumens, while providing an extensive array of options in trims, beam spreads, controls, CRI, apertures, finishes, and more
- Designed as an install-from-below downlight for simple installation and field interchangeable optics for easy maintenance to save time and money
- Ideal for task, directional, and accent lighting

ORDERING INFORMATION

Specifications subject to change.

Example: IC02 35/10 AR LSS 20D MVOLT UGZ

Series		Color Temperature		Lumens		Reflector Color		Reflector Finish		Beam	
IC02	Incito 2" Round Open Downlight	27/	2700K	02	250LM	AR	Clear	LSS	Semi-specular	15D	15° beam angle
		30/	3000K	05	500LM					20D	20° beam angle
		35/	3500K	07	750LM					25D	25° beam angle
		40/	4000K	10	1000LM					30D	30° beam angle
		50/	5000K	15	1500LM					35D	35° beam angle
				20	2000LM					40D	40° beam angle
								45D	45° beam angle		
								50D	50° beam angle		
								55D	55° beam angle		

Voltage		Driver		Control Interface ²		Options			
MVOLT	120-277V	UGZ ¹	Universal dimming to 1% (0-10V, 120V TRIAC or ELV)	(blank)		NCH ³	New Construction Mounting Pan		
120	120V			NLT	nLight® dimming pack			90CRI ⁴	High CRI (90+)
277	277V			NLTAIR2	nLight® AIR dimming pack				

Notes

1. Refer to Tech 240 for compatible dimmers
2. Field installed, access required to location of remote mounted device
3. NCH is required for T-grid ceilings or where code requires
4. 5000K CCT not available with 90CRI

Gotham®

Incito™ 4" Round Downlight

High Center Beam LED Open Downlight

- Incito™ high intensity distributions provide narrow field angles to create sharp contrast with crisp highlights and deep shadows for a dramatic layer of light
- Choose from an extensive array of options in trims, beam spreads, controls, CRI, apertures, finishes, and more
- Fully serviceable and upgradeable lensed LED light engine is suitable for field maintenance or service from below the ceiling to save time and money
- Ideal for task, directional, and accent lighting



ORDERING INFORMATION		Specifications subject to change.										Example: IC04 35/10 AR LSS 30D MVOLT UGZ									
Series		Color Temperature				Lumens		Reflector Color		Reflector Finish		Beam									
IC04	Incito 4" Round Downlight	27/	2700K		05	500LM		AR	Clear	LSS	Semi-specular	30D	30° beam angle								
		30/	3000K		07	750LM						35D	35° beam angle								
		35/	3500K		10	1000LM						40D	40° beam angle								
		40/	4000K		15	1500LM						45D	45° beam angle								
		50/	5000K		20	2000LM						50D	50° beam angle								
					25	2500LM						55D	55° beam angle								
					30	3000LM						60D	60° beam angle								
												65D	65° beam angle								
Voltage		Driver				Control Interface				Options											
120	120V	GZ10	0-10V driver dims to 10%			NLT	nLight® dimming pack			90CRI	High CRI (90+)										
277	277V	GZ1	0-10V driver dims to 1%							TRW ¹	White painted flange										
		EZ1	eldoLED 0-10V ECOdrive, linear dimming to 1% min																		

Notes

1. For use with different reflector finish only (i.e. AR)



Gotham®

EVO® 2" Round Downlight

General Illumination LED Open Downlight

- EVO® batwing distribution provides a uniform, wide angled general illumination on horizontal and vertical surfaces to create smooth edges and an even layer of light without hot spots or rings
- With a small size, EVO 2" still provides best-in-class spacing and superior glare control with 50° cutoff to source and top down flash characteristics for general illumination
- Fully serviceable and upgradeable lensed LED light engine is suitable for field maintenance or service from below the ceiling to save time and money
- High performance combined with visual elegance, delivered at a level of energy efficiency of 70% lumen maintenance at 60,000 hours

ORDERING INFORMATION

Specifications subject to change.

Example: EVO2 35/20 AR LSS ND MVOLT UGZ

Series		Color Temperature		Lumens		Reflector Color		Flange Type		Reflector Finish		Distribution	
EVO2	EVO 2" Round Open Downlight	27/	2700K	02	250LM	AR	Clear	(blank)	Self-flanged	LSS	Semi-specular	ND	Narrow (0.8 s/mh)
		30/	3000K	05	500LM	WR ¹	White painted	FL	Flangeless	LD	Matte diffuse	MWD	Medium Wide (1.0 s/mh)
		35/	3500K	07	750LM							WD	Wide (1.2 s/mh)
		40/	4000K	10	1000LM								
			15	1500LM									
			20	2000LM									
Voltage		Driver				Control Interface				Options			
MVOLT	120-277V	UGZ ²		Universal dimming to 1% (0-10V, 120V TRIAC or ELV)		(blank)				NCH ⁴		New Construction Mounting Pan	
120	120V					NLT ³		nLight® dimming pack		TRW		White Painted Flange	
277	277V									90CRI		High CRI (90+)	

Notes

1. Not available with reflector finish
2. Refer to Tech 240 for compatible dimmers
3. Field installed, access required to location of remote mounted device
4. NCH is required for T-grid ceilings or where code requires

Gotham®

EVO® 4" and 6" Round Downlight

General Illumination LED Open Downlight

- EVO® batwing distribution provides a uniform, wide angled general illumination on horizontal and vertical surfaces to create smooth edges and an even layer of light without hot spots or rings
- As with every EVO downlight, the open downlight has been designed to evolve as solid-state technology evolves, without compromising the quality of light
- Fully serviceable and upgradeable lensed LED light engine is suitable for field maintenance or service from below the ceiling to save time and money
- Ideal for general ambient, wallwash, and decorative illumination



ORDERING INFORMATION		Specifications subject to change.										Example: EVO4 40/20 AR WD LSS MVOLT GZ1			
Series		Color Temperature		Lumens		Reflector & Flange Color		Trim Style		Distribution		Reflector Finish			
EVO4	EVO 4" Round Open Downlight	27/	2700K	02	250LM	AR	Clear	(blank)	Self-flanged	ND²	Narrow (0.7 s/mh)	LSS	Semi-specular		
EVO6	EVO 6" Round Open Downlight	30/	3000K	05	500LM	WR¹	White	FL	Flangeless	MD	Medium (0.9 s/mh)	LD	Matte diffuse		
		35/	3500K	07	750LM										
		40/	4000K	10	1000LM										
				15	1500LM					MWD	Medium Wide (1.0 s/mh)				
				20	2000LM										
				25	2500LM										
				30	3000LM					WD	Wide (1.2 s/mh)				
				35	3500LM										
				40	4000LM										
			45	4500LM											
Voltage		Driver*		Control Interface		Emergency Options		Options							
MVOLT	120-277V	GZ10	0-10V driver dims to 10%	NLT³	nLight® dimming pack	E10WCP⁴	Emergency battery pack, 10W Constant Power, CA Title 20 compliant with integral test switch	TRW	White painted flange						
120	120V	GZ1	0-10V driver dims to 1%												
277	277V	EZ1	eldoLED 0-10V ECOdrive, linear dimming to 1% min												

Notes

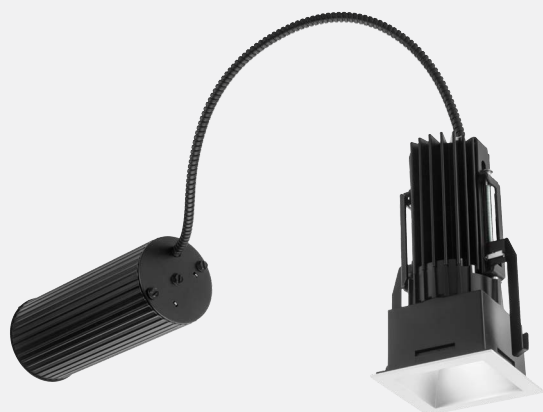
*Refer to Tech 240 for compatible dimmers

1. Not available with reflector finish

2. Only available with EVO6

3. Must specify voltage

4. 11" of plenum depth or top access required for battery pack maintenance



Gotham®

EVO® 2" Square Downlight

General Illumination LED Open Downlight

- EVO® batwing distribution provides a uniform, wide angled general illumination on horizontal and vertical surfaces to create smooth edges and an even layer of light without hot spots or rings
- With a small size, EVO 2" still provides best-in-class spacing and superior glare control with 50° cutoff to source and top down flash characteristics for general illumination
- Fully serviceable and upgradeable lensed LED light engine is suitable for field maintenance or service from below the ceiling to save time and money
- High performance combined with visual elegance, delivered at a level of energy efficiency of 70% lumen maintenance at 60,000 hours

ORDERING INFORMATION

Specifications subject to change.

Example: EV02SQ 27/05 AR LSS MWD MVOLT UGZ

Series	Color Temperature	Lumens	Reflector Color	Flange Type	Reflector Finish	Distribution
EV02SQ EVO 2" Square Open Downlight	27/ 2700K	02 250LM	AR Clear	(blank) Self-flanged FL Flangeless	LSS Semi-specular LD Matte diffuse	MWD Medium Wide (1.0 s/mh) WD Wide (1.2 s/mh)
	30/ 3000K	05 500LM				
	35/ 3500K	07 750LM				
	40/ 4000K	10 1000LM				
		15 1500LM				
		20 2000LM				
Voltage	Driver	Options				
MVOLT 120-277V	UGZ Universal dimming to 1% (0-10V, 120V TRIAC or ELV)	NCH ¹ New Construction Mounting Pan				
120 120V		90CRI High CRI (90+)				
277 277V						

Notes

1. Required for T-grid ceilings or where code requires.

Gotham®

EVO® 4" Square Downlight

General Illumination LED Open Downlight

- EVO® batwing distribution provides a uniform, wide angled general illumination on horizontal and vertical surfaces to create smooth edges and an even layer of light without hot spots or rings
- As with every EVO downlight, the open downlight has been designed to evolve as solid-state technology evolves, without compromising the quality of light and providing 45° cutoff to source
- Fully serviceable and upgradeable lensed LED light engine is suitable for field maintenance or service from below the ceiling to save time and money
- Ideal for general ambient, wallwash, and decorative illumination



ORDERING INFORMATION		Specifications subject to change.				Example: EVO4SQ 27/05 AR LSS MWD MVOLT EZ1					
Series		Color Temperature		Lumens		Reflector Color		Flange Type		Reflector Finish	
EVO4SQ	EVO 4" Square Open Downlight	27/	2700K	02	250LM	AR	Clear	(blank)	Self-flanged	LSS	Semi-specular
		30/	3000K	05	500LM			FL	Flangeless	LD	Matte diffuse
		35/	3500K	07	750LM						
		40/	4000K	10	1000LM						
				15	1500LM						
				20	2000LM						
				25	2500LM						
				30	3000LM						
				35	3500LM						
Voltage		Driver		Options							
MVOLT	120-277V	GZ10	0-10V driver dims to 10%	TRW	White painted flange						
120	120V	GZ1	0-10V driver dims to 1%	90CRI	High CRI (90+)						
277	277V	EZ1	eldoLED 0-10V ECOdrive, linear dimming to 1% min								



Gotham®

EVO® 6" Square Downlight

General Illumination LED Open Downlight

- EVO® batwing distribution provides a uniform, wide angled general illumination on horizontal and vertical surfaces to create smooth edges and an even layer of light without hot spots or rings
- As with every EVO downlight, the open downlight has been designed to evolve as solid-state technology evolves, without compromising the quality of light and providing 45° cutoff to source
- Fully serviceable and upgradeable lensed LED light engine is suitable for field maintenance or service from below the ceiling to save time and money
- Ideal for general ambient, wallwash, and decorative illumination for high ceiling heights

ORDERING INFORMATION

Specifications subject to change.

Example: EVO6SQ 27/05 AR LSS MWD 120 GZ10 NLT

Series		Color Temperature		Lumens		Reflector Color		Reflector Finish		Voltage	
EVO6SQ	EVO 6" Square Open Downlight	27/	2700K	02	250LM	AR	Clear	LSS	Semi-specular	MVOLT	120-277V
		30/	3000K	05	500LM					120	120V
		35/	3500K	07	750LM					277	277V
		40/	4000K	10	1000LM						
				15	1500LM						
				20	2000LM						
				25	2500LM						
				30	3000LM						
				35	3500LM						
				40	4000LM						
				45	4500LM						
Driver		Control Interface				Options					
GZ10	0-10V driver dims to 10%	NLT ¹	nLight® dimming pack controls			90CRI High CRI (90+)					
GZ1	0-10V driver dims to 1%										
EZ1	eIdoLED 0-10V ECOdrive, linear dimming to 1% min										

Notes

1. Must specify voltage.





eldoLED

Aculux®

Initia 3"

New Construction Round Downlight

- Comprehensive family (Downlight, Adjustable, Wall Wash) of versatile, elegant precision recessed luminaires
- Up to 1500 lumens, 2-step binning and excellent color rendition
- Adjustable accent luminaire features 0°– 35° vertical and 359° horizontal aiming
- Superb 45° visual cut-off for a truly quiet ceiling
- Ideal choice for residential, commercial and hospitality applications

ORDERING INFORMATION

Specifications subject to change.

Example: INIT3 A 12LM 30K 90CRI 25D EZ1 MVOLT NT3ABV BD WHSF

Series		Lumens	Color Temperature	CRI	Beam	Driver	Voltage ¹	Ratings	Options
INIT3 A	New Construction Adjustable	08LM 800 lumens	27K 2700K	80CRI 80 CRI	18D 18° beam	FPC Phase cut dim (1% min)	120 120V	(blank) Non-IC	NLIGHT ³ nLight Dimming
		12LM 1200 lumens	30K 3000K	90CRI 90 CRI	25D 25° beam		277 277V	ICAT ² IC Rated, Air-Tight	
INIT3 D	New Construction Downlight & Wall Wash	15LM 1500 lumens	35K 3500K		35D 35° beam	EZ1 eldoLED 0-10V (linear 1% min)	MVOLT 120-277V		
					50D 50° beam				
Round Trims		Reflector Finish		Flange Style		Trim Lens Environment		Ceiling Installation	
Reflector				Flanged				Flanged	
NT3AC	Angle-Cut Reflector	W White Paint		SF Self Flanged (same finish as reflector)		(blank) Open Damp Location		(blank) Ceiling 0.5" - 1.5"	
NT3DP	Downlight Reflector	CD Clear Diffuse							
		CS Clear Specular							
Bevels		Finish and Flange Style						Flanged	
NT3ABV BD	Adjustable Bevel	WHSF White, Flanged				(blank) Open Damp Location		(blank) Ceiling 0.5" - 1.5"	
NT3DBV BD	Downlight Bevel								
Round Trims		Reflector Finish		Flange Style		Environment		Ceiling Installation	
Wall Wash				Flanged				Flanged	
NT3WW ⁴	Lensed Wall Wash	W White Paint		SF Self Flanged (same finish as reflector)		(blank) Damp Location		(blank) Ceiling 0.5" - 1.5"	
		CD Clear Diffuse							
		CS Clear Specular							

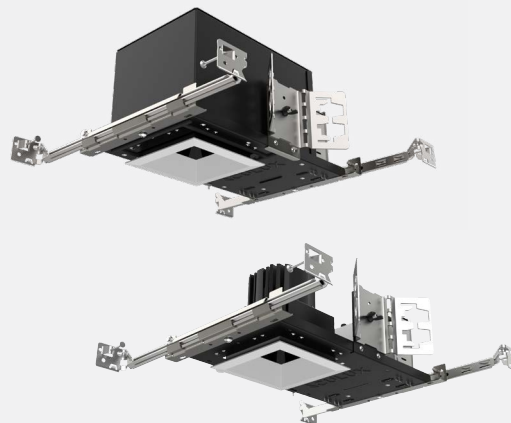
Notes

1. MVOLT standard on EZ1 unless NLIGHT specified. Must be 120 for FPC
2. ICAT not available for A housing at 15LM
3. NLIGHT available on non-IC with EZ1 only. Must specify 120 or 277 volts.
4. Must specify D housing and 25D beam with wall wash trim

Initia 3"

New Construction Square Downlight

- Comprehensive family (Downlight, Adjustable, Wall Wash) of versatile, elegant precision recessed luminaires
- Up to 1500 lumens, 2-step binning and excellent color rendition
- Adjustable accent luminaire features 0°–35° vertical and 359° horizontal aiming
- Superb 45° visual cut-off for a truly quiet ceiling
- Ideal choice for residential, commercial and hospitality applications



eldoLED

ORDERING INFORMATION

Specifications subject to change.

Example: INIT3SQ D 15LM 30K 90CRI 25D EZ1 MVOLT NT3SQD CD SF

Series	Lumens	Color Temperature	CRI	Beam	Driver	Voltage ¹	Ratings	Options
INIT3SQ A New Construction Square Adjustable	08LM	800 lumens	27K 2700K	18D 18° beam	FPC Phase cut dim (1% min)	120 120V	(blank) Non-IC	NLIGHT ³ nLight Dimming
	12LM	1200 lumens	30K 3000K	25D 25° beam	EZ1 eldoLED 0-10V (linear 1% min)	277 277V	ICAT ² IC Rated, Air-Tight	
INIT3SQ D New Construction Square Downlight & Wall Wash	15LM	1500 lumens	35K 3500K	35D 35° beam 50D 50° beam		MVOLT 120-277V		

Square Trims	Reflector Finish	Flange Style	Trim Lens Environment	Ceiling Installation
Reflector		Flanged		Flanged
NT3SQA Angle-Cut Reflector	W White Paint	SF Self Flanged (same finish as reflector)	(blank) Open Damp Location	(blank) Ceiling 0.5" - 1.5"
NT3SQD Downlight Reflector	CD Clear Diffuse			
	CS Clear Specular			

Bevels	Finish and Flange Style	Trim Lens Environment	Ceiling Installation
NT3SQABV BD Adjustable Bevel	WHSF White, Flanged	(blank) Open Damp Location	(blank) Ceiling 0.5" - 1.5"
NT3SQDBV BD Downlight Bevel			

Square Trims	Reflector Finish	Flange Style	Environment	Ceiling Installation
Wall Wash		Flanged		Flanged
NT3SQWW ⁴ Lensed Wall Wash	W White Paint	SF Self Flanged (same finish as reflector)	(blank) Damp Location	(blank) Ceiling 0.5" - 1.5"
	CD Clear Diffuse			
	CS Clear Specular			

Notes

- MVOLT standard on EZ1 unless NLIGHT specified. Must be 120 for FPC
- ICAT not available for A housing at 15LM
- NLIGHT available on non-IC with EZ1 only. Must specify 120 or 277 volts.
- Must specify D housing and 25D beam with wall wash trim



Lithonia Lighting®

LDN4/LDN6 Switchable

4" and 6" Round Open and Wall Wash with Switchable Technology

- LDN 4" and 6" open downlight and wall wash for everyday general illumination comes with a switchable driver with 4 CCT options and adjustable lumen output
- Available with a remarkable set of options and features making it the best value in commercial downlighting
- Save time and money with quick installation times using traditional recessed installation frames and flexibility with switchable CCT and lumens
- Most cost-effective general illumination solution that allows for a quiet, glare-free ceiling without compromising on efficacy over 100 LPW
- Typical applications include corridors, lobbies, conference rooms, classrooms, retail, hospitality, and offices

ORDERING INFORMATION

Specifications subject to change.

Example: LDN4 AL02 SWW1 L04 AR LSS MVOLT UGZ

Series		Lumens		Color Temperature		Trim Style		Trim Color		Flange Color							
LDN4	4" Round	AL01	500/750/ 1000 Lumens	SWW1	3000K, 3500K, 4000K, 5000K	L04	Downlight	AR	Clear	(blank)	Self-flange						
						LW4	Wallwash										
LDN6	6" Round	AL02	1000/1500/ 2000 Lumens									L06	Downlight				
		AL03	2000/2500/ 3000 Lumens									LW6	Wallwash				
Trim Finish		Distribution		Voltage		Driver		Emergency		Control Input							
LSS	Semi-specular	(blank)	Medium Wide (1.0s/mh)	MVOLT	120-277V	UGZ	Universal dimming to 10% 0-10V; line voltage dimming (120V)	(blank)	No emergency option	(blank)	No control option						
LD	Matte Diffused							E10WCP	Emergency battery pack, 10W constant power with integral test switch. Certified in CA Title 20 MAEDBS.	NTLAIR2 NLTAIREM2	nLight® AIR enabled nLight® AIR dimming pack wireless controls. UL924 emergency operation, via power interrupt detection.						

Options

90CRI High CRI (90+)

Notes

1. Not available with a reflector finish
2. Available with clear (AR) reflector only

LDN4

4" Round Open and Wall Wash

- LDN 4" open downlight and wall wash for everyday general illumination have an array of options in multiple aperture sizes, shapes, forms, drivers, and controls
- Available with a remarkable set of options and features making it the best value in commercial downlighting
- Save time and money with quick installation times using the traditional recessed installation frames
- Most cost-effective general illumination solution that allows for a quiet, glare-free ceiling without compromising on efficacy of up to 104 LPW
- Typical applications include corridors, lobbies, conference rooms, classrooms, retail, hospitality, and offices



ORDERING INFORMATION

Specifications subject to change.

Example: LDN4 35/15 L04AR LSS TRW MVOLT GZ1

Series		Color Temperature		Lumens		Aperture/Trim Color		Trim Finish		Flange Color	
LDN4	LDN 4" Round New Construction Downlight	30/	3000K	07	750 Lumens	L04AR	Round Clear Reflector/Flange	LSS	Semi-specular	TRW ¹	White Painted Flange
		35/	3500K	10	1000 Lumens	L04WR	Round White Reflector/Flange	LD	Matte diffuse		
		40/	4000K	15	1500 Lumens		LW4AR				
				20	2000 Lumens	LW4WR		Wall Wash White Reflector/Flange			
				25	2500 Lumens						
				30	3000 Lumens						
Voltage		Driver		Emergency		Control Input					
MVOLT	120-277V	GZ10	0-10V driver dims to 10%	(blank)	No emergency option	(blank)	No control option				
		GZ1	0-10V driver dims to 1%	E10WCP	Emergency battery pack, 10W constant power with integral test switch. Certified in CA Title 20 MAEDBS.	NLTAIR2	nLight® AIR Enabled				
						NLTAIREM2	nLight® AIR Dimming Pack Wireless Controls. UL924 Emergency Operation, via power interrupt detection. Available with battery pack options.				

Options

90CRI High CRI (90+)

Notes

1. Only available with L04AR or LW4AR



Lithonia Lighting®

LDN6

6" Round Open and Wall Wash

- LDN 6" open downlight and wall wash for everyday general illumination have an array of options in multiple aperture sizes, shapes, forms, drivers, and controls
- Available with a remarkable set of options and features making it the best value in commercial downlighting
- Save time and money with quick installation times using the traditional recessed installation frames
- Most cost-effective general illumination solution that allows for a quiet, glare-free ceiling without compromising on efficacy of up to 95 LPW
- Typical applications include corridors, lobbies, conference rooms, classrooms, retail, hospitality, and offices

ORDERING INFORMATION

Specifications subject to change.

Example: LDN6 35/15 L06AR LSS TRW MVOLT GZ1

Series		Color Temperature		Lumens		Aperture/Trim Color		Trim Finish		Flange Color	
LDN6	LDN 6" Round New Construction Downlight	30/	3000K	07	750 Lumens	L06AR	Round Clear Reflector/Flange	LSS	Semi-specular	TRW ¹	White Painted Flange
		35/	3500K	10	1000 Lumens	L06WR	Round White Reflector/Flange	LD	Matte diffuse		
		40/	4000K	15	1500 Lumens	LW6AR	Wall Wash Clear Reflector/Flange				
				20	2000 Lumens						
				25	2500 Lumens						
				30	3000 Lumens	LW6WR	Wall Wash White Reflector/Flange				
Voltage		Driver		Emergency		Control Input		Options			
MVOLT	120-277V	GZ10	0-10V driver dims to 10%	(blank)	No emergency option	(blank)	No control option	90CRI High CRI (90+)			
		GZ1	0-10V driver dims to 1%	E10WCP	Emergency battery pack, 10W constant power with integral test switch. Certified in CA Title 20 MAEDBS.	NLTAIR2 NLTAIREM2	nLight® AIR Enabled nLight® AIR Dimming Pack Wireless Controls. UL924 Emergency Operation, via power interrupt detection. Available with battery pack options.				

Notes

1. Only available with L04AR or LW4AR

LBR Series

4", 6" & 8" Round Retrofit Downlights with Switchable Technology

- LBR offers a seamless install-from below design and abundant energy savings
- Available with switchable CCTs (4 options), and adjustable lumen output
- Glare control with deep source regression without compromising efficiency up to 114 LPW
- Ideal for any commercial renovation, remodel or new construction project



ORDERING INFORMATION Specifications subject to change. **Example: LBR6 ALO2 SWW1 AR LSS MW MVOLT UGZ**

Series		Lumens		Color Temperature		Reflector Color		Reflector Finish	
LBR4	LBR 4" Retrofit Downlight	Adjustable Lumen Output		Fixed Lumen Output		Switchable CCT		Fixed CCT	
		ALO1	500/750/1000LM	07LM	750LM	SWW1	3000K/3500K/4000K/5000K	30K	3000K
LBR6	LBR 6" Retrofit Downlight	ALO2	1000/1500/2000LM	10LM	1000LM			35K	3500K
LBR8	LBR 8" Retrofit Downlight	ALO3	2000/2500/3000LM	15LM	1500LM			40K	4000K
				20LM	2000LM				
				25LM	2500LM				
				30LM	3000LM				
Distribution		Voltage		Driver		Emergency		Control Input	
MWD	Medium wide (1.0 s/mh)	MVOLT	MVOLT, 120V-277V	UGZ	Universal dimming to 10% 0-10V; line voltage dimming (120V)	(blank) E10WCP ¹	No emergency needed Battery pack (10W constant power) non-T20 compliant integral test switch	(blank) NLTAIR2 ² NLTAIREM2 ²	No control input needed nLight® AIR enabled nLight® AIR Dimming Pack Wireless Controls. UL924 emergency operation, via power interrupt detection.

Options

- QDS Quick disconnect plugs
90CRI High CRI (90+)

Notes

2. Not available with ALO3, ALO4, QDS, or NLTAIREM2.
3. Not available with QDS



Emergency



Emergency

52 Exit Signs

53 Emergency Units



Lithonia Lighting®

EDG/EDGR

LED Edge-Lit Exits

- Sealed, maintenance-free nickel-cadmium battery delivers 90 minutes capacity to emergency lamps
- Extruded aluminum (standard) or white finish lamp housing
- Clear thermoplastic panels and mirrored separator panel to simulate clear background
- Dual voltage capability (120/277V)
- Universal surface (top, end, or back) mounting with canopy provided

ORDERING INFORMATION

Specifications subject to change.

Example: EDG 1 R EL

Series		Housing Color		Number of Faces		Letter Color		Operations	
EDG	Surface Mount LED Edge-Lit Exit	(blank)	Brushed Aluminum	1	Single Face	R'	Red on clear (single face only)	(blank)	AC Only
EDGR	Recessed LED Edge-Lit Exit	W	White	2	Double Face	G'	Green on clear (single face only)	EL	Nickel-cadmium Battery
						RMR	Red on Mirror		
						GMR	Green on Mirror		

Notes

1. For single-face clear panels, EXIT is seen as reversed image from the back.

Lithonia Lighting®

ELM2L

Quantum® LED Emergency Light

- Unique track and swivel arrangement permits full range of direction for lamp head adjustment
- Two high performance LEDs with acrylic lens' rated at 1.2 watts each and delivering a total of 220 lumens in a linear pattern
- Sealed, maintenance-free nickel-cadmium battery
- Wall mount and ceiling mount standard

**ORDERING INFORMATION**

Specifications subject to change.

Example: ELM2L

Series		Lamp Type		Housing Color		Voltage		Battery Type		Automatic Testing	
ELM2L	Aimable Optics	(blank)	LP220L 220 Lumen, 2.4 watt, linear pattern, two lamps	(blank)	White	(blank)	120/277 VAC/60Hz	(blank)	Nicad LTP Lithium Iron Phosphate	(blank)	None
						UVOLT	120-347 VAC, 50/60Hz			SDRT	Self Diagnostics, Remote Test
										AELR ¹	Automatic Emergency Lighting Reporting

Notes

1. AELR transmits monthly and annual test results and diagnostics information for automated reporting requirements. Only available with LTP battery type.



Lithonia Lighting®

ELM4L/ELM6L

Quantum® LED Emergency Light

- Unique track and swivel arrangement permits full range of direction for lamp head adjustment
- High performance LEDs with acrylic lens' rated at 1.2 watts each
- Sealed, maintenance-free nickel-cadmium battery
- Wall mount and ceiling mount standard

ORDERING INFORMATION

Specifications subject to change.

Example: ELM4L

Series		Lamp Type		Housing Color		Voltage		Battery Type		Automatic Testing	
ELM4L	640 Lumens, Adjustable Optics	(blank)	SP640L 640 Lumen, 6.6 watt, Spot Pattern, Two Lamp	(blank)	White	(blank)	120/277 VAC/60Hz	(blank)	Nicad LTP Lithium Iron Phosphate	(blank) ¹	None
		(blank)	SP1100L 1100 Lumen, 10.6 watt, Spot Pattern, Two Lamp			UVOLT	120-347 VAC, 50/60Hz			SDRT	Self Diagnostics, Remote Test
ELM6L	1100 Lumens, Adjustable Optics									AELR ²	Automatic Emergency Lighting Reporting

Notes

1. Only available with ELM4L
2. AELR transmits monthly and annual test results and diagnostics information for automated reporting requirements. Only available with LTP battery type.





Outdoor



Outdoor

- 58 **Area Luminaires**
- 66 **Floodlights**
- 70 **Wall Luminaires**



Lithonia Lighting®

D-Series Size 0

LED Area Luminaire

- With up to 21,000 lumens, DSX0 delivers leading-edge optical performance with a contemporary design that blends seamlessly into any environment
- Full breadth of area lighting optics including Type 2, Type 3, Type 4, Type 5 and Forward Throw offering superior uniformity and maximum pole spacing
- The D-Series is available with wireless networked embedded controls from nLight®, addressing requirements of Luminaire Level Lighting Controls (LLLC). An nLight AIR sensor is embedded within this luminaire
- Multi-pattern mounting built-in for easy installation onto existing mounting holes
- Ideal for pedestrian scale applications including parking lot, area lighting, campuses, bike paths, walkways, and retail sites

ORDERING INFORMATION

Specifications subject to change.

Example: DSX0 LED P6 40K 70CRI T3M MVOLT SPA NLTAIR2 PIRHN DDBXD

Series		Forward Optic LEDs	Color Temperature		CRI		Distribution		Voltage	
DSX0 LED	D-Series Size 0	P1	30K	3000K	70CRI	70 CRI	T2M	Type II Medium	MVOLT	120-277V
		P2	40K	4000K			T3M	Type III Medium	HVOLT ¹	347-480V
		P3	50K	5000K			T4M	Type IV Medium	XVOLT ²	277-480V
		P4					TFTM	Forward Throw Medium	120	120V
		P5							208	208V
		P6					T5M	Type V Medium	240	240V
		P7					T5W	Type V Wide	277	277V
									347	347V
									480	480V

Mounting (Shipped Included)		Options (Shipped Installed)		Finish	
SPA	Square pole mounting (#8 drilling, 3.5" min. SQ pole)	NLTAIR2 PIRHN ^{4,5}	nLight AIR generation 2, with Networked, Bi-Level motion/ambient sensor, 8-40' mounting height, ambient sensor enabled at 2fc.	DDBXD	Dark Bronze
RPA	Round pole mounting (#8 drilling, 3.5" min. RND pole)			DBLXD	Black
				DNAXD	Natural Aluminum
WBA ³	Wall bracket	PER ^{7,6}	Seven-pin receptacle only (controls ordered separate)	DWHXD	White
		HS	Houseside shield (black finish standard)		

Notes

1. Not available with package P1 or P2 when combined with option NLTAIR2 PIRHN.
2. Not available with package P1 or P2.
3. Cannot be combined with Type 5 distribution plus photocell PER
4. NLTAIR2 PIRHN not available with P1 using MVOLT.
5. Reference Motion Sensor Default Settings table and Controls Options table on page 4 of the full [spec sheet](#)
6. Not available with NLTAIR2 PIRHN

D-Series Size 1

LED Area Luminaire

- With up to 35,000 lumens, DSX1 delivers leading-edge optical performance with a contemporary design that blends seamlessly into any environment
- Full breadth of area lighting optics including Type 2, Type 3, Type 4, Type 5 and Forward Throw offering superior uniformity and maximizes pole spacing
- The D-Series is available with wireless networked embedded controls from nLight®, addressing requirements of Luminaire Level Lighting Controls (LLLC). An nLight AIR sensor is embedded within this luminaire
- Multi-pattern mounting built-in for easy installation onto existing mounting holes
- Ideal for many commercial and municipal applications, such as parking lots, plazas, campuses, and streetscapes



ORDERING INFORMATION Specifications subject to change. **Example: DSX1 LED P7 40K 70CRI T3M MVOLT SPA NLTAIR2 PIRHN DDBXD**

Series	Forward Optic LEDs	Color Temperature	CRI	Distribution	Voltage
DSX1 LED D-Series Size 1	P1 P2 P3 P4 P5 P6 P7 P8 P9	30K 3000K 40K 4000K 50K 5000K	70CRI 70 CRI	T2M Type II Medium T3M Type III Medium T4M Type IV Medium TFTM Forward Throw Medium T5M Type V Medium T5W Type V Wide	MVOLT 120-277V HVOLT ¹ 347-480V XVOLT ² 277-480V

Mounting (Shipping Included)	Options	Finish
SPA Square pole mounting (#8 drilling, 3.5" min. SQ pole)	NLTAIR2 PIRHN ⁴ nLight AIR generation 2, with Networked, Bi-Level motion/ambient sensor, 8-40" mounting height, ambient sensor enabled at 2fc.	DDBXD Dark Bronze DBLXD Black DNAXD Natural Aluminum DWHXD White
RPA Round pole mounting (#8 drilling, 3.5" min. RND pole)	PER ^{7,6} Seven-pin receptacle only (controls ordered separate)	
WBA ³ Wall bracket	DS ^{6,7,8} Dual switching	
	HS Houseside shield (black finish standard)	

Notes

1. Not available with package P1 when combined with option NLTAIR2 PIRHN.
2. Not available with package P1.
3. Cannot be combined with Type 5 distribution plus photocell PER.
4. NLTAIR2 PIRHN not available with P1 using MVOLT.
5. Reference Motion Sensor Default Settings table and Controls Options table on page 4 of the full [spec sheet](#)
6. Not available with NLTAIR2 PIRHN.
7. Not available with PER7.
8. Requires (2) separately switched circuits. Provides 50/50 fixture operation via (2) different sets of leads on P1, P2, P3, P4, P5 (2 drivers). Note: Provides 60/40 operation using (2) different sets of leads on P6, P7, or P8 (3 drivers).



Lithonia Lighting®

D-Series Size 2

LED Area Luminaire

- With up to 60,000 lumens, DSX2 delivers leading-edge optical performance with a contemporary design that blends seamlessly into any environment
- Full breadth of area lighting optics including Type 2, Type 3, Type 4, Type 5 and Forward Throw offering superior uniformity and maximum pole spacing
- The D-Series is available with wireless networked embedded controls from nLight®, addressing requirements of Luminaire Level Lighting Controls (LLLC). An nLight AIR sensor is embedded within this luminaire
- Multi-pattern mounting built-in for easy installation onto existing mounting holes
- Ideal for applications such as car dealerships and large parking lots adjacent to malls, transit stations, grocery stores, home centers, and other big-box retailers

ORDERING INFORMATION

Specifications subject to change.

Example: DSX2 LED P7 40K 70CRI T3M MVOLT SPA NLTAIR2 PIRHN DDBXD

Series		Forward Optic LEDs	Color Temperature		CRI		Distribution		Voltage	
DSX2 LED	D-Series Size 2	P1	30K	3000K	70CRI	70 CRI	T2M	Type II Medium	MVOLT	120-277V
		P2	40K	4000K			T3M	Type III Medium	HVOLT	347-480V
		P3	50K	5000K			T4M	Type IV Medium	XVOLT	277-480V
		P4					TFTM	Forward Throw Medium	120	120V
		P5							208	208V
		P6					T5M	Type V Medium	240	240V
		P7					T5W	Type V Wide	277	277V
		P8							347	347V
									480	480V

Mounting (Shipped Included)		Options (Shipped Installed)		Finish	
SPA	Square pole mounting (#8 drilling, 3.5" min. SQ pole)	NLTAIR2 PIRHN ²	nLight AIR generation 2, with Networked, Bi-Level motion/ambient sensor, 8-40' mounting height, ambient sensor enabled at 2fc.	DDBXD	Dark Bronze
RPA	Round pole mounting (#8 drilling, 3.5" min. RND pole)			DBLXD	Black
WBA ¹	Wall bracket	PER7 ^{2,3}	Seven-pin receptacle only (controls ordered separate)	DNAXD	Natural Aluminum
		DS ^{3,4,5}	Dual switching	DWHXD	White
		HS	Houseside shield (black finish standard)		

Notes

1. Cannot be combined with Type 5 distribution plus photocell PER.
2. Reference Motion Sensor Default Settings table and Controls Options table on page 4 of the full [spec sheet](#)
3. Not available with NLTAIR2 PIRHN.
4. Not available with PER7.
5. Requires (2) separately switched circuits. Provides 50/50 fixture operation via (2) different sets of leads on P1, P2, P3, P4, P5 (2 drivers). Note: Provides 60/40 operation using (2) different sets of leads on P6, P7, or P8 (3 drivers).





Lithonia Lighting®

RSX1

LED Area Luminaire

- With up to 17,000 lumens, the RSX1 can replace 70W to 400W metal halide luminaires. Ideal for new construction, renovation, and one-for-one replacement when availability, price and payback are of utmost importance
- Full breadth of area lighting optics including Type 2, Type 3, Type 4 and Type 5 photometric distributions offering superior uniformity
- Easy to install standard arm for round or square pole featuring a universal, no-drill mounting. Additional mountings available including wall bracket and adjustable slipfitter
- Super-efficient LED's featuring excellent LPW. Energy savings up to 75%+ can be achieved when replacing HID
- Ideal for pedestrian, parking lot and area lighting applications including retail, education, parks/recreation, warehouse and office

ORDERING INFORMATION

Specifications subject to change.

Example: RSX1 LED P4 40K R3 MVOLT IS DDBXD

Series		Performance Package		Color Temperature		Distribution		Voltage		Mounting	
RSX1 LED	RSX LED Area Size 1	P2	Package 2	30K	3000K	R2	Type 2 Wide	120	120V	RPA	Round pole mounting
		P3	Package 3	40K	4000K	R3	Type 3 Wide	208	208V	SPA	Square pole mounting
		P4	Package 4	50K	5000K	R4	Type 4 Wide	240	240V	WBA	Wall mount bracket
						R5 ¹	Type 5 Wide	277	277V	IS ³	Integral slipfitter
								347	347V		
								480	480V		
								HVOLT	347V-480V		
								MVOLT	120V-277V		
								XVOLT ²	277V-480V		

Options		Finish	
NLTAIR2 PIRHN ^{5,6}	nLight AIR generation 2, with Networked, Bi-Level motion/ambient sensor	DBLXD	Black
PER ⁷	Seven-wire receptable only (no controls)	DDBXD	Dark Bronze
PE ^{4,5}	Photocell, buttontype	DNAXD	Natural Aluminum
HS	House-side shield	DWHXD	White

Notes

1. Not available with WBA
2. Not available with P2 or PE
3. Maximum tilt is 90 degrees above horizontal
4. Requires MVOLT or 347V
5. Two or more of the options cannot be combined including: PE, PER7 and NLTAIR2 PIRHN
6. Requires MVOLT or HVOLT

RSX2

LED Area Luminaire

- With up to 31,000 lumens, the RSX2 can replace up to 400W metal halide luminaires. Ideal for new construction, renovation, and one-for-one replacement when availability, price and payback are of utmost importance
- Full breadth of area lighting optics including Type 2, Type 3, Type 4 and Type 5 photometric distributions offering superior uniformity
- Easy to install standard arm for round or square pole featuring a universal, no-drill mounting. Additional mountings available including wall bracket and adjustable slipfitter
- Super-efficient LED's featuring excellent LPW. Energy savings up to 75%+ can be achieved when replacing HID
- Ideal for pedestrian, parking lot and area lighting applications including retail, education, parks/recreation, warehouse and office.



ORDERING INFORMATION

Specifications subject to change.

Example: RSX2 LED P6 40K R3 MVOLT SPA DDBXD

Series		Performance Package		Color Temperature		Distribution		Voltage		Mounting	
RSX2 LED	RSX LED Area Size 2	P2	Package 2	30K	3000K	R2	Type 2 Wide	120	120V	RPA	Round pole mounting
		P3	Package 3	40K	4000K	R3	Type 3 Wide	208	208V	SPA	Square pole mounting
		P4	Package 4	50K	5000K	R4	Type 4 Wide	240	240V	WBA	Wall mount bracket
		P5	Package 5			R5 ¹	Type 5 Wide	277	277V	IS ³	Integral slipfitter
		P6	Package 6					347	347V		
								480	480V		
								HVOLT	347V-480V		
								MVOLT	120V-277V		
						XVOLT ²	277V-480V				
Options				Finish							
NLTAIR2 PIRHN ^{5,6}	nLight AIR generation 2, with Networked, Bi-Level motion/ambient sensor			DBLXD	Black						
PER ⁷⁵	Seven-wire receptable only (no controls)			DDBXD	Dark Bronze						
PE ^{4,5}	Photocell, buttontype			DNAXD	Natural Aluminum						
HS	House-side shield			DWHXD	White						

Notes

1. Not available with WBA
2. Not available with P2 or PE
3. Maximum tilt is 90 degrees above horizontal
4. Requires MVOLT or 347V
5. Two or more of the options cannot be combined including: PE, PER7 and NLTAIR2 PIRHN
6. Requires MVOLT or HVOLT



Lithonia Lighting®

RSX3

LED Area Luminaire

- With up to 41,000 lumens, the RSX3 can replace 1000W metal halide luminaires. Ideal for new construction, renovation, and one-for-one replacement when availability, price and payback are of utmost importance
- Full breadth of area lighting optics including Type 2, Type 3, Type 4 and Type 5 photometric distributions offering superior uniformity
- Easy to install standard arm for round or square pole featuring a universal, no-drill mounting. Additional mountings available including wall bracket and adjustable slipfitter
- Super-efficient LED's featuring excellent LPW. Energy savings up to 75%+ can be achieved when replacing HID
- Ideal for pedestrian, parking lot and area lighting applications including retail, education, parks/recreation, warehouse and office

ORDERING INFORMATION

Specifications subject to change.

Example: RSX3 LED P4 40K R3 MVOLT SPA DDBXD

Series		Performance Package		Color Temperature		Distribution		Voltage		Mounting	
RSX3 LED	RSX LED Area Size 3	P2	Package 2	30K	3000K	R2	Type 2 Wide	120	120V	RPA	Round pole mounting
		P3	Package 3	40K	4000K	R3	Type 3 Wide	208	208V	SPA	Square pole mounting
		P4	Package 4	50K	5000K	R4	Type 4 Wide	240	240V	WBA	Wall mount bracket
						R5 ¹	Type 5 Wide	277	277V	IS ³	Integral slipfitter
								347	347V		
								480	480V		
								HVOLT	347V-480V		
								MVOLT	120V-277V		
								XVOLT ²	277V-480V		

Options		Finish	
NLTAIR2 PIRHN ^{5,6}	nLight AIR generation 2, with Networked, Bi-Level motion/ambient sensor	DBLXD	Black
PER ⁷	Seven-wire receptable only (no controls)	DDBXD	Dark Bronze
PE ^{4,5}	Photocell, buttontype	DNAXD	Natural Aluminum
HS	House-side shield	DWHXD	White

Notes

1. Not available with WBA
2. Not available with PE
3. Maximum tilt is 90 degrees above horizontal
4. Requires MVOLT or 347V
5. Two or more of the options cannot be combined including: PE, PER7 and NLTAIR2 PIRHN
6. Requires MVOLT or HVOLT

RSX4

LED Area Luminaire

- With up to 70,000 lumens, the RSX4 can replace up to two 1000W metal halide luminaires. Ideal for new construction, renovation, and one-for-one replacement when availability, price and payback are of utmost importance
- Full breadth of area lighting optics including Type 2, Type 3, Type 4 and Type 5 photometric distributions offering superior uniformity
- Easy to install standard arm for round or square pole featuring a universal, no-drill mounting. Additional mountings available including wall bracket and adjustable slipfitter
- Super-efficient LED's featuring excellent LPW. Energy savings up to 75%+ can be achieved when replacing HID
- Ideal for pedestrian, parking lot and area lighting applications including retail, education, parks/recreation, warehouse and office



ORDERING INFORMATION		Specifications subject to change.										Example: RSX4 LED P6 40K R3 MVOLT SPA DDBXD			
Series		Performance Package		Color Temperature		Distribution		Voltage		Mounting					
RSX4 LED	RSX LED Area Size 4	P2	Package 2	30K	3000K	R2	Type 2 Wide	120	120V	RPA	Round pole mounting				
		P3	Package 3	40K	4000K	R3	Type 3 Wide	208	208V	SPA	Square pole mounting				
		P4	Package 4	50K	5000K	R4	Type 4 Wide	240	240V	WBA	Wall mount bracket				
		P5	Package 5			R5 ¹	Type 5 Wide	277	277V	IS ³	Integral slipfitter				
		P6	Package 6					347	347V						
								480	480V						
								HVOLT	347V-480V						
								MVOLT	120V-277V						
				XVOLT ²	277V-480V										
Options				Finish											
NLTAIR2 PIRHN ^{5,6}	nLight AIR generation 2, with Networked, Bi-Level motion/ambient sensor			DBLXD	Black										
PER7 ⁵	Seven-wire receptable only (no controls)			DDBXD	Dark Bronze										
PE ^{4,5}	Photocell, buttontype			DNAXD	Natural Aluminum										
HS	House-side shield			DWHXD	White										

Notes

1. Not available with WBA
2. Not available with PE
3. Maximum tilt is 90 degrees above horizontal
4. Requires MVOLT or 347V
5. Two or more of the options cannot be combined including: PE, PER7 and NLTAIR2 PIRHN
6. Requires MVOLT or HVOLT



Lithonia Lighting®

RSXF1

LED Floodlight

- With up to 23,000 lumens, the RSXF1 can replace 400W metal halide floodlights. Ideal for new construction, renovation, and one-for-one replacement when availability, price and payback are of utmost importance
- Most popular wide and area forward floodlighting distribution patterns offering superior uniformity
- Easy to install adjustable slipfitter mounts onto 2 3/8" OD tenon; yoke mount also available
- Super-efficient LED's featuring excellent LPW. Energy savings up to 60%+ can be achieved when replacing HID
- Ideal for area and flood lighting applications including retail, education, parks/recreation, warehouse and office

ORDERING INFORMATION

Specifications subject to change.

Example: RSXF1 LED P4 40K WFL MVOLT IS DDBXD

Series	Performance Package		Color Temperature		Distribution		Voltage		Mounting	
RSXF1 LED	P2	Package 2	30K	3000K	AWFD	Area wide forward	120	120V	IS ²	Integral slipfitter
	P3	Package 3	40K	4000K	WFL	Wide flood	208	208V	YKC62 ²	Yoke with cord, 16g, 3ft
	P4	Package 4	50K	5000K			240	240V		
	P5	Package 5					277	277V		
							347	347V		
							480	480V		
							HVOLT	347V-480V		
							MVOLT	120V-277V		
							XVOLT ¹	277V-480V		
	Control Options			Finish						
NLTAIR2 PIRHN ^{3,4}	nLight AIR generation 2, with Networked, Bi-Level motion/ambient sensor		DBLXD	Black						
PER ⁷³	Seven-wire receptable only (no controls)		DDBXD	Dark Bronze						
PE ^{3,5}	Photocell, buttontype		DNAXD	Natural Aluminum						
			DWHXD	White						

Notes

1. Not available with P2 or PE
2. Maximum tilt is 90 degrees above horizontal
3. Two or both of the options cannot be combined, including: PE, PER7 and NLTAIR2 PIRHN
4. Requires MVOLT or HVOLT
5. Requires MVOLT or 347V

RSXF2

LED Floodlight

- With up to 44,000 lumens, the RSXF2 can replace 250W to 1000W metal halide luminaires. Ideal for new construction, renovation, and one-for-one replacement when availability, price and payback are of utmost importance
- Most popular wide and area forward floodlighting distribution patterns offering superior uniformity
- Easy to install adjustable slipfitter mounts onto 2 3/8" OD tenon; yoke mount also available
- Super-efficient LED's featuring excellent LPW. Energy savings up to 75%+ can be achieved when replacing HID
- Ideal for area and flood lighting applications including retail, education, parks/recreation, warehouse and office



ORDERING INFORMATION

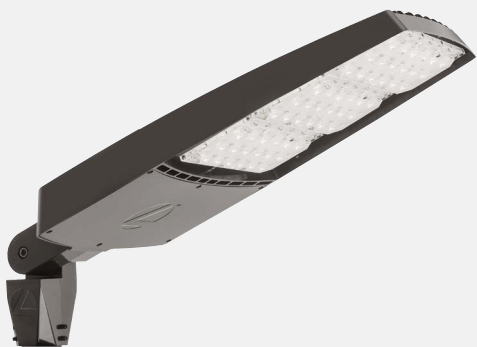
Specifications subject to change.

Example: RSXF2 LED P4 40K WFL MVOLT IS DDBXD

Series	Performance Package	Color Temperature	Distribution	Voltage	Mounting
RSXF2 LED	P2 Package 2	30K 3000K	AWFD Area wide forward	120 120V	IS ² Integral slipfitter
	P3 Package 3	40K 4000K	WFL Wide flood	208 208V	YKC63 ² Yoke with cord, 16g, 3ft
	P4 Package 4	50K 5000K		240 240V	
	P5 Package 5			277 277V	
	P6 Package 6			347 347V	
	P7 Package 7			480 480V	
	P8 Package 8			HVOLT 347V-480V	
				MVOLT 120V-277V	
				XVOLT ¹ 277V-480V	
Control Options		Finish			
NLTAIR2 PIRHN ^{3,4}	nLight AIR generation 2, with Networked, Bi-Level motion/ambient sensor	DBLXD	Black		
PER7 ³	Seven-wire receptable only (no controls)	DDBXD	Dark Bronze		
PE ^{3,5}	Photocell, buttontype	DNAXD	Natural Aluminum		
		DWHXD	White		

Notes

1. Not available with P2 or PE
2. Maximum tilt is 90 degrees above horizontal
3. Two or both of the options cannot be combined, including: PE, PER7 and NLTAIR2 PIRHN
4. Requires MVOLT or HVOLT
5. Requires MVOLT or 347V



Lithonia Lighting®

RSXF3

LED Floodlight

- With up to 41,000 lumens, the RSXF3 can replace 1000W metal halide luminaires. Ideal for new construction, renovation, and one-for-one replacement when availability, price and payback are of utmost importance
- Most popular wide and area forward floodlighting distribution patterns offering superior uniformity
- Easy to install adjustable slipfitter mounts onto 2 3/8" OD tenon; yoke mount also available
- Super-efficient LED's featuring excellent LPW. Energy savings up to 71%+ can be achieved when replacing HID
- Ideal for area and flood lighting applications including retail, education, parks/recreation, warehouse and office

ORDERING INFORMATION

Specifications subject to change.

Example: RSXF3 LED P4 40K WFL MVOLT IS DDBXD

Series	Performance Package		Color Temperature		Distribution		Voltage		Mounting	
RSXF3 LED	P2	Package 2	30K	3000K	AWFD	Area wide forward	120	120V	IS ²	Integral slipfitter
	P3	Package 3	40K	4000K	WFL	Wide flood	208	208V	YKC64 ²	Yoke with cord, 16g, 4ft
	P4	Package 4	50K	5000K			240	240V		
							277	277V		
							347	347V		
							480	480V		
							HVOLT	347V-480V		
							MVOLT	120V-277V		
							XVOLT ¹	277V-480V		
	Control Options			Finish						
NLTAIR2 PIRHN ^{3,4}	nLight AIR generation 2, with Networked, Bi-Level motion/ambient sensor		DBLXD	Black						
PER ⁷	Seven-wire receptable only (no controls)		DDBXD	Dark Bronze						
			DNAXD	Natural Aluminum						
PE ^{3,5}	Photocell, buttontype		DWHXD	White						

Notes

1. Not available with PE
2. Maximum tilt is 90 degrees above horizontal
3. Two or both of the options cannot be combined, including: PE, PER7 and NLTAIR2 PIRHN
4. Requires MVOLT or HVOLT
5. Requires MVOLT or 347V

RSXF4

LED Floodlight

- With up to 85,000 lumens, the RSXF4 can replace 1000W or 1500W metal halide luminaires. Ideal for new construction, renovation, and one-for-one replacement when availability, price and payback are of utmost importance
- Most popular wide and area forward floodlighting distribution patterns offering superior uniformity
- Easy to install adjustable slipfitter mounts onto 2 3/8" OD tenon; yoke mount also available
- Super-efficient LED's featuring excellent LPW. Energy savings up to 60%+ can be achieved when replacing HID
- Ideal for area and flood lighting applications including retail, education, parks/recreation, warehouse and office



ORDERING INFORMATION

Specifications subject to change.

Example: RSXF4 LED P4 40K WFL MVOLT IS DDBXD

Series	Performance Package	Color Temperature	Distribution	Voltage	Mounting
RSXF4 LED	P2 Package 2	30K 3000K	AWFD Area wide forward	120 120V	IS ² Integral slipfitter
	P3 Package 3	40K 4000K	WFL Wide flood	208 208V	YKC64 ² Yoke with cord, 16g, 4ft
	P4 Package 4	50K 5000K		240 240V	
	P5 Package 5			277 277V	
	P6 Package 6			347 347V	
	P7 Package 7			480 480V	
	P8 Package 8			HVOLT 347V-480V	
				MVOLT 120V-277V	
				XVOLT ¹ 277V-480V	
Control Options		Finish			
NLTAIR2 PIRHN ^{3,4}	nLight AIR generation 2, with Networked, Bi-Level motion/ambient sensor	DBLXD	Black		
PER7 ³	Seven-wire receptable only (no controls)	DDBXD	Dark Bronze		
PE ^{3,5}	Photocell, buttontype	DNAXD	Natural Aluminum		
		DWHXD	White		

Notes

1. Not available with PE
2. Maximum tilt is 90 degrees above horizontal
3. Two or both of the options cannot be combined, including: PE, PER7 and NLTAIR2 PIRHN
4. Requires MVOLT or HVOLT
5. Requires MVOLT or 347V



Lithonia Lighting®

WDGE1

LED Architectural Wall Luminaire

- Delivering up to 2,000 lumens with a soft, non-pixelated light source, the WDGE1 creates a visually comfortable environment
- Patented reflector technology combined with a recessed diffuse lens produce low surface brightness yet provide good optical control
- 8' - 10' mounting height
- The compact size of WDGE1, with its integrated emergency battery backup option, makes it an ideal over-the-door wall-mounted lighting solution
- With clean lines, the WDGE1 blends seamlessly into any architecture, meeting the everyday lighting needs of engineers and architects alike

ORDERING INFORMATION

Specifications subject to change.

Example: WDGE1 LED P1 30K 80CRI VF MVOLT SRM PE DDBXD

Series		Package	Color Temperature		CRI		Distribution		Voltage
WDGE1 LED		P1	30K	3000K	80CRI	80 CRI	VF	Visual comfort forward throw	MVOLT
		P2	40K	4000K			VW	Visual comfort wide	
Mounting			Options				Finish		
SRM	Surface mounting bracket		E4WH ¹	Emergency battery backup, Certified in CA Title 20 MAEDBS (4W, 0° C min)			DDBXD	Dark Bronze	
			PE	Photocell button type			DBLXD	Black	
							DNAXD	Natural Aluminum	
							DWHXD	White	

Notes

1. Not available with PE

WDGE2

LED Architectural Wall Luminaire Visual Comfort Optic

- Delivering up to 6,000 lumens with a soft, non-pixelated light source, the WDGE2 creates a visually comfortable environment
- Patented reflector technology combined with a recessed diffuse lens produce low surface brightness yet provide good optical control
- 8' - 15' mounting height
- With clean lines, the WDGE2 blends seamlessly into any architecture, meeting the everyday lighting needs of engineers and architects alike
- Applications include commercial offices, warehouses, hospitals, schools, malls, restaurants, and other commercial buildings



ORDERING INFORMATION

Specifications subject to change.

Example: WDGE2 LED P3 40K 80CRI VF MVOLT SRM DDBXD

Series	Package	Color Temperature	CRI	Distribution	Voltage
WDGE2 LED	P1 P2 P3 P4 P5	30K 3000K 40K 4000K	80CRI 80 CRI	VF Visual comfort forward throw VW Visual comfort wide	MVOLT
Mounting		Options		Finish	
SRM	Surface mounting bracket	PE	Photocell button type	DDBXD Dark Bronze DBLXD Black DNAXD Natural Aluminum DWHXD White	



Lithonia Lighting®

WDGE2

LED Architectural Wall Luminaire Precision Refractive Optic

- Delivering up to 4,200 lumens with industry leading precision refractive optics, the WDGE2 provides great uniform distribution and optical control
- Precision optics provide the desired wide spacing and forward-throw at higher mounting heights and the combination of acrylic refractive lenses and high-power LEDs result in excellent uniformity and low power density
- 8' - 12' mounting height
- With clean lines, the WDGE2 blends seamlessly into any architecture, meeting the everyday lighting needs of engineers and architects alike
- Applications include commercial offices, warehouses, hospitals, schools, malls, restaurants, and other commercial buildings

ORDERING INFORMATION

Specifications subject to change.

Example: WDGE2 LED P3 40K 80CRI T3M MVOLT PE DDBXD

Series	Package	Color Temperature	CRI	Distribution	Voltage
WDGE2 LED	P1 P2 P3 P4	30K 3000K 40K 4000K	80CRI 80 CRI	T3M Type III Medium	MVOLT
Options		Finish			
PE	Photocell button type	DDBXD DBLXD DNAXD DWHXD	Dark Bronze Black Natural Aluminum White		

WDGE3

LED Architectural Wall Luminaire

- Delivering up to 12,000 lumens through a precision refractive lens with wide distribution, the WDGE3 is perfect for alternative to pole mounted luminaires
- Precision optics provide the desired wide spacing and forward-throw at higher mounting heights and the combination of acrylic refractive lenses and high-power LEDs result in excellent uniformity and low power density
- 10' - 20' mounting height
- Embedded with nLight® AIR wireless controls, the WDGE family provides additional energy savings and code compliance
- With clean lines, the WDGE3 blends seamlessly into any architecture, meeting the everyday lighting needs of engineers and architects alike. Applications include commercial offices, warehouses, hospitals, schools, malls and restaurants



ORDERING INFORMATION

Specifications subject to change.

Example: WDGE3 LED P3 40K 70CRI R3 MVOLT SRM DDBXD

Series	Package	Color Temperature	CRI	Distribution	Voltage
WDGE3 LED	P1 P2 P3 P4	30K 3000K 40K 4000K 50K 5000K	70CRI 70 CRI 80CRI 80 CRI	R3 Type 3 R4 Type 4 RFT Forward throw	MVOLT

Mounting	Options	Finish
SRM Surface mounting bracket	E20WC Emergency battery backup, Certified in CA Title 20 MAEDBS (158W, -20° C min) PE ¹ Photocell button type PIR Bi-level (100/35%) motion sensor for 8-15' mounting heights. Intended for use on switched circuits with external dusk to dawn switching. NLTAIR2 PIR nLight AIR Wireless enabled bi-level motion/ambient sensor for 8-15' mounting heights.	DDBXD Dark Bronze DBLXD Black DNAXD Natural Aluminum DWHXD White

Notes

1. Not available sensors/controls



Lithonia Lighting®

WEDGE4

LED Architectural Wall Luminaire

- Delivering up to 25,000 lumens through a precision refractive lens with wide distribution, the WEDGE4 is a perfect alternative to pole mounted luminaires
- Precision optics provide the desired wide spacing and forward-throw at higher mounting heights and the combination of acrylic refractive lenses and high-power LEDs result in excellent uniformity and low power density
- 15' - 25' mounting height
- Embedded with nLight® AIR wireless controls, the WEDGE family provides additional energy savings and code compliance
- With clean lines, the WEDGE3 blends seamlessly into any architecture, meeting the everyday lighting needs of engineers and architects alike. Applications include commercial offices, warehouses, hospitals, schools, malls and restaurants

ORDERING INFORMATION

Specifications subject to change.

Example: WEDGE4 LED P3 40K 70CRI R3 MVOLT SRM DDBXD

Series	Package	Color Temperature	CRI	Distribution	Voltage
WEDGE4 LED	P1 P2 P3 P4 P5 P6	40K 4000K	70CRI 70 CRI 80CRI 80 CRI	R3 Type 3 R4 Type 4 RFT Forward throw	MVOLT

Mounting	Options	Finish
SRM Surface mounting bracket	PE' Photocell button type PIR Bi-level (100/35%) motion sensor for 8-15' mounting heights. Intended for use on switched circuits with external dusk to dawn switching. NLTAIR2 PIR nLight AIR Wireless enabled bi-level motion/ambient sensor for 8-15' mounting heights.	DDBXD Dark Bronze DBLXD Black DNAXD Natural Aluminum DWHXD White

Notes

1. Not available sensors/controls





Controls



Controls

Standalone Lighting Controls

- 78 Wall Switches and Wall Plates
- 81 Sensors
- 82 Power Packs

Networked Lighting Controls

Wireless

- 83 Wall Switches
- 85 Sensors
- 86 Load Controllers/Power Packs

Wired

- 87 Wall Switches
- 89 Sensors
- 91 Load Controllers/Power Packs
- 95 Controllers
- 97 System Interfaces
- 98 Accessories



SensorSwitch™

WSXA

Wall Switch Sensor with Occupancy Detection and Daylighting

- The WSXA Series offers superior occupancy detection, including Passive Dual Technology (PDT) which uses PIR and Microphonics™ to sense motion and sound
- Includes interchangeable line and load connections (or miswire protection) to prevent damage to the device. Multiple programming settings are available depending on the desired sensor behavior
- Includes an integrated photocell for occupancy detection with Adaptive Daylight Harvesting (ADH)

ORDERING INFORMATION

Catalog Number	Description	Detection Type	Poles	Dimming	Operating Mode	Voltage	Color
WSXA PDT D SA WH	Wall Switch Sensor (Occupancy & Daylighting)	PDT Dual Technology (PIR/Microphonics™)	Single Pole	Dimming	Manual On (default) or Automatic On	120-277V	White
WSXA PDT D WH	Wall Switch Sensor (Occupancy & Daylighting)	PDT Dual Technology (PIR/Microphonics™)	Single Pole	Dimming	Automatic on (default) or Vacancy	120-277V	White
WSXA PDT WH	Wall Switch Sensor (Occupancy & Daylighting)	PDT Dual Technology (PIR/Microphonics™)	Single Pole	On/Off	Automatic on (default) or Vacancy	120-277V	White
WSXA PDT SA WH	Wall Switch Sensor (Occupancy & Daylighting)	PDT Dual Technology (PIR/Microphonics™)	Single Pole	On/Off	Manual On (default) or Automatic On	120-277V	White
WSXA D SA WH	Wall Switch Sensor (Occupancy & Daylighting)	Passive Infrared (PIR)	Single Pole	Dimming	Manual On (default) or Automatic On	120-277V	White
WSXA D WH	Wall Switch Sensor (Occupancy & Daylighting)	Passive Infrared (PIR)	Single Pole	Dimming	Automatic on (default) or Vacancy	120-277V	White
WSXA SA WH	Wall Switch Sensor (Occupancy & Daylighting)	Passive Infrared (PIR)	Single Pole	On/Off	Manual On (default) or Automatic On	120-277V	White
WSXA WH	Wall Switch Sensor (Occupancy & Daylighting)	Passive Infrared (PIR)	Single Pole	On/Off	Automatic on (default) or Vacancy	120-277V	White

Compatible with occupancy based versions of the the SSW Series of sealed wall plates, which protect the device from liquid intrusion (ordered separately)

SensorSwitch™

SPODMA and SPODMRA

Wall Switch with Dimming

- Compatible with 0-10V dimming luminaires
- Wall switch devices in the SPODMA and SPODMRA Series are programmable without removing the switch plate
- The SPODMRA accommodates powering over ground or neutral connection
- Aids in energy saving strategies by allowing users to dim the lighting levels to the desired level
- Blends in seamlessly with a variety commercial applications, including classrooms, open offices, conference rooms, private offices and more



ORDERING INFORMATION

Catalog Number	Description	Voltage Type	Dimming	# of Switches	Color
SPODMA D WH	Wall Switch	Low Voltage	Yes	1 Switch / Auto On	White
SPODMA D SA WH	Wall Switch	Low Voltage	Yes	1 Switch / Manual On	White
SPODMA SA WH	Wall Switch	Low Voltage	No	1 Switch / Manual On	White
SPODMA WH	Wall Switch	Low Voltage	No	1 Switch / Auto On	White
SPODMRA D WH	Wall Switch	Line Voltage, 120-277V	Yes	1 Switch / Auto On	White

Occupancy sensor required for Auto-On operation

Compatible with the SSW Series of sealed wall plates, which protect the device from liquid intrusion (ordered separately)

To power low voltage SPODMA devices, use the PP20 Power Pack readily available in our Contractor Select™ Program



SensorSwitch™

SSW

Sealed Screwless Wall Plate

- Designed to protect wall switch devices from liquid intrusion through a silicone rubber layer overlayed on the wall switch
- The IP54 rated rubber layer allows for damp or direct spray-on cleaning without damaging the device and while maintaining a button tactile feel
- Made from a tough thermoplastic material that can withstand high impact without breakage while protecting the user from electrical shock and device damage
- Install by removing the wall plate already on the device and replace with the sealed wall plate! Sealed wall plates can be added after initial installation occurs
- Blends perfectly into the design of applications where wall switch devices will undergo regular cleaning, such as classrooms, offices, and healthcare facilities

ORDERING INFORMATION

Catalog Number	Description	# of Gangs	Color
SSW 1GNG WH	Sealed Screwless Wall Plate Cover	Single Gang	White

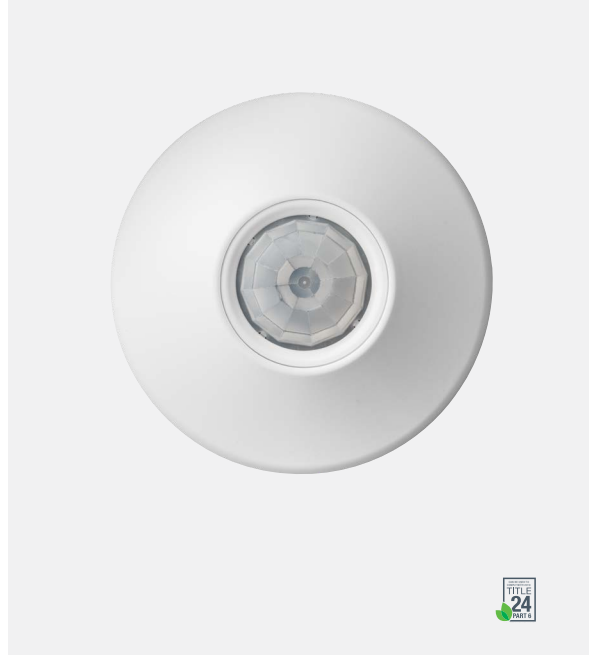
Compatible with various SensorSwitch and nLight® new aesthetic wall switch devices. Occupancy based SSW wall plates are available for WSXA and nWSXA devices

SensorSwitch™

CM and CMR

Ceiling Mount Sensors with Occupancy Detection

- Small or large motion 360° lens coverage
- PIR occupancy detection helps keep the lights on only when needed. For rooms with obstructions, Passive Dual Technology (PDT) adds Microphonics™ detection so the sensor detects movement and sound
- Easily install by mounting directly to a ceiling tile or a metallic grid. A self-contained relay is included in CMR devices, so there is no need to install an additional power pack
- Design Select™ configurations address various applications, including open offices, classrooms, conference rooms, private offices, and hallways



ORDERING INFORMATION

Catalog Number	Description	Voltage Type	Detection Type	Coverage Type	Auxiliary Relay
CM 10	Ceiling Mount Sensor	Low Voltage	PIR	Large Motion 360°	None
CM 10 R	Ceiling Mount Sensor	Low Voltage	PIR	Large Motion 360°	Low Voltage Relay
CM 9	Ceiling Mount Sensor	Low Voltage	PIR	Small Motion 360°	None
CM 9 R	Ceiling Mount Sensor	Low Voltage	PIR	Small Motion 360°	Low Voltage Relay
CMR 10	Ceiling Mount Sensor	Line Voltage, 120-277V	PIR	Large Motion 360°	None
CM PDT 10 R	Ceiling Mount Sensor	Low Voltage	PDT Dual Technology (PIR/Microphonics™)	Large Motion 360°	Low Voltage Relay
CM PDT 9	Ceiling Mount Sensor	Low Voltage	PDT Dual Technology (PIR/Microphonics™)	Small Motion 360°	None
CM PDT 9 R	Ceiling Mount Sensor	Low Voltage	PDT Dual Technology (PIR/Microphonics™)	Small Motion 360°	Low Voltage Relay
CM PDT 10	Ceiling Mount Sensor	Low Voltage	PDT Dual Technology (PIR/Microphonics™)	Large Motion 360°	None
CMR PDT 10	Ceiling Mount Sensor	Line Voltage, 120-277V	PDT Dual Technology (PIR/Microphonics™)	Large Motion 360°	None

To power low voltage CM devices, use the PP20 Power Pack readily available in our Contractor Select™ Program



SensorSwitch™

PP16 Power Pack

Bypass Relay

- Operates as an automatic bypass shunt for control devices (such as other relay packs, toggle switches and phase dimming packs) that are controlling emergency powered lighting loads
- Relay is open when normal power is present, but will latch closed if normal power is lost
- Includes a fuse integrated to the relay wirelead, offering protection from external load faults. Meets NEMA410 ratings for LED inrush
- Push button allows users the ability to test the emergency operation
- Ideal for commercial and industrial applications where bypass control is required. Attach the relay directly to a junction box or fixture through a 1/2" knockout

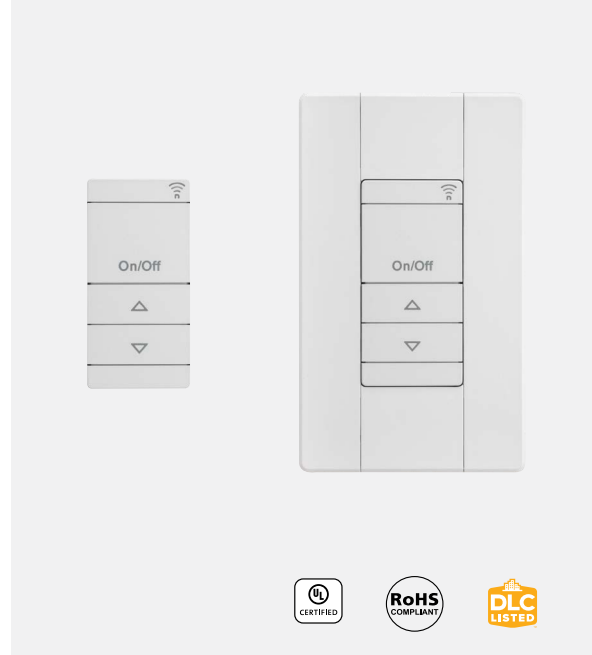
ORDERING INFORMATION

Catalog Number	Description	Circuit Protection
PP16 SHUNT EFP	Bypass Relay Pack	External Fault Protection
PP16 SHUNT	Bypass Relay Pack	None

rPOD Micro

Wireless Battery-Powered Wall Switch

- The nLight® AIR rPOD Micro is a wireless, ultra-thin, battery-powered wall switch that blends modern looks with industry leading installation flexibility
- Available either as a Wallpod or Remote, the rPOD Micro is made for convenient mounting, control from a desk, and handheld carrying, making it ideal for a wide variety of applications
- Mount the rPOD Micro Wallpod to a gang box or directly to a wall surface, and enjoy the installation savings without sacrificing aesthetics
- Powered by a single CR2032 coin cell battery, the rPOD Micro delivers 10 years of control
- The rPOD Micro provides the freedom to mount anywhere, with the versatility to use and take anywhere



ORDERING INFORMATION		Specifications subject to change.					Example: RPODU DX WH G2 J5			
Series	Poles	Dimming Control		Mounting Options		Color		Generation		Packaging
RPODU rPOD Micro Battery Powered Wall Switch	(blank) 2P 2S 4S	(blank)	On/Off Control DX On/Off + Raise/ Lower Control	(blank) ¹ NMO ²	WallPod, for surface or wall box mounting, not for remote use Remote, installs without wall plate to surface or to pedestal, can be used as a remote	WH	White	G2	Generation 2 compatibility	(blank) J5 Single unit 5-pack, can only be ordered in multiples of 5

Notes:

1. WallPod version includes anti-theft feature that prevents functionality when handheld or removed from mounting location.
2. NMO unit will not fit into a standard decorator wall plate opening



nLight®

rPODBA and rPODLA

Wireless Wall Switches

- Available as either battery or line powered version
- Communicates with nLight AIR devices via radio frequency (RF) in the 900MHz spectrum
- 2 or 4 preset scene control fully configurable via CLAIRITY™+ mobile app
- Soft-click push-button control

ORDERING INFORMATION

Catalog Number	Description	Power Type	Poles & Scenes	Dimming Control	Voltage	Color
rPODBA DX WH G2	nLight AIR Wall Switch	Battery Powered	Single Pole	On/Off + Raise/Lower Control	n/a	White
rPODBA WH G2	nLight AIR Wall Switch	Battery Powered	Single Pole	On/Off Control	n/a	White
rPODBA 2P DX WH G2	nLight AIR Wall Switch	Battery Powered	Two Pole	On/Off + Raise/Lower Control	n/a	White
rPODBA 4S DX WH G2	nLight AIR Wall Switch	Battery Powered	4 Scene control (4 buttons)	On/Off + Raise/Lower Control	n/a	White
rPODBA 2P WH G2	nLight AIR Wall Switch	Battery Powered	Two Pole	On/Off Control	n/a	White
rPODBA 4S WH G2	nLight AIR Wall Switch	Battery Powered	4 Scene control (4 buttons)	On/Off Control	n/a	White
rPODLA DX MVOLT WH G2	nLight AIR Wall Switch	Line Powered	Single Pole	On/Off + Raise/Lower Control	120-277VAC	White
rPODLA MVOLT WH G2	nLight AIR Wall Switch	Line Powered	Single Pole	On/Off Control	120-277VAC	White

nLight®

rCMS and rCMSB

Wireless Ceiling Mount Sensor

- Occupancy and daylighting sensor with PIR-based motion sensing or optional Passive Dual Technology (PIR + Microphonics™)
- Integrated, dimming photocell standard — Photocell views down through sensor lens
- LED status indicator
- Adjustable settings (e.g. occupancy time delays, photocell set-points) via CLAIRITY™+ mobile app or SensorView software application



ORDERING INFORMATION

Catalog Number	Description	Detection Type	Lens	Voltage
rCMS PDT 9 G2	nLight AIR Ceiling Mounted Sensor	PDT Dual Technology (PIR/Microphonics)	Small Motion / Extended Range 360°	24V
rCMS PDT 10 G2	nLight AIR Ceiling Mounted Sensor	PDT Dual Technology (PIR/Microphonics)	Large Motion / Extended Range 360°	24V
rCMS 10 G2	nLight AIR Ceiling Mounted Sensor	PIR Detection	Large Motion / Extended Range 360°	24V
rCMS 9 G2	nLight AIR Ceiling Mounted Sensor	PIR Detection	Small Motion / Extended Range 360°	24V

Catalog Number	Description	Detection Type	Lens	Voltage
rCMSB PDT 7 G2	nLight AIR Ceiling Mounted Battery-Powered Sensor	PDT Dual Technology (PIR/Microphonics)	Low Mount 360°	n/a
rCMSB 7 G2	nLight AIR Ceiling Mounted Battery-Powered Sensor	PIR Detection	Low Mount 360°	n/a



nLight®
rPP20

Wireless Power/Relay Pack

- Consists of a relay, 0-10V dimming control, and a low voltage power supply output to power wireless sensors
- Communicates with luminaires with embedded controls by nLight, switches, and sensors as part of lighting control groups
- CLAIRITY™+ mobile application makes configuration easy - no specialized tools or software to learn
- Ideal for multiple commercial and industrial applications including office spaces, open spaces and conference rooms

ORDERING INFORMATION					
Catalog Number	Description	Dimming	Emergency	24V Output	Voltage
rPP20 D 24V EFP G2	nLight AIR Power/Relay Pack	0-10VDC Dimming Output (via chase nipple)	None	Yes	120-277V
rPP20 D EFP G2	nLight AIR Power/Relay Pack	0-10VDC Dimming Output (via chase nipple)	None	No	120-277V
rPP20 24V EFP G2	nLight AIR Power/Relay Pack	No Dimming	None	Yes	120-277V
rPP20 EFP G2	nLight AIR Power/Relay Pack	No Dimming	None	External Fault Protection	120-277V

nPODMA

Wall Switch

- Ideal for any indoor space with nLight Wired controls devices
- Control for luminaires with embedded controls by nLight or an nLight relay pack
- On/Off and/or Raise/Lower control
- Single or dual channel
- Multiple wall switches may be used for three-way (or greater) configurations without traveler wires
- Scene control options



ORDERING INFORMATION

Catalog Number	Description	Poles & Scenes	Dimming Control	Color
nPODMA DX WH	Wall Switch	None	On/off + raise/lower control	White
nPODMA WH	Wall Switch	None	On/Off	White
nPODMA 2P DX WH	Wall Switch	2 Pole	On/off + raise/lower control	White
nPODMA 4P DX WH	Wall Switch	4 Pole	On/off + raise/lower control	White
nPODMA 4S DX WH	Wall Switch	4 Scene Control (4 buttons)	On/off + raise/lower control	White
nPODMA 2S DX WH	Wall Switch	2 Scene Control (2 buttons)	On/off + raise/lower control	White
nPODMA 2P WH	Wall Switch	2 Pole	On/Off	White
nPODMA 2S WH	Wall Switch	2 Scene Control (2 buttons)	On/Off	White
nPODMA 4P WH	Wall Switch	4 Pole	On/Off	White
nPODMA 4S WH	Wall Switch	4 Scene Control (4 buttons)	On/Off	White



nLight®

nWSXA

Passive Infrared Wall Switch Sensor

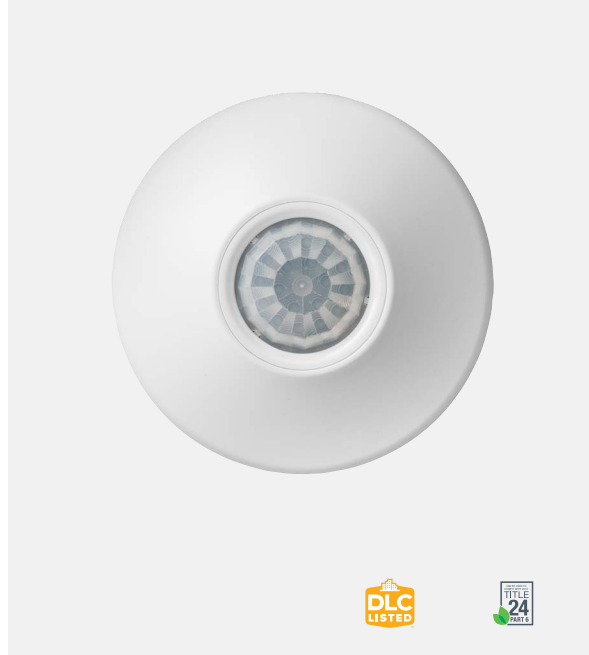
- Dual technology motion detection featuring 100% digital PIR and Microphonics™
- Vandal resistant lens standard, includes screwless wall plate
- Push-button programmable, adjustable time delays, multiple operating modes
- Multiple nWSXA sensors or WallPods can be used in three-way (or greater) configurations without traveler wires
- Broadcasts occupancy, photocell, and switch information over a local and/or global nLight channel
- Ideal for private offices, private restrooms, copy rooms, closets, or any small enclosed spaces

ORDERING INFORMATION

Catalog Number	Description	Detection Type	Voltage Type	Dimming	Color
nWSXA PDT LV DX WH	Passive Infrared Wall Switch Sensor	PDT Dual Technology (PIR/Microphonics)	Low Voltage	Raise/Lower Dim Control	White
nWSXA PDT LV WH	Passive Infrared Wall Switch Sensor	PDT Dual Technology (PIR/Microphonics)	Low Voltage	None	White
nWSXA LV DX WH	Passive Infrared Wall Switch Sensor	PIR Detection	Low Voltage	Raise/Lower Dim Control	White
nWSXA LV WH	Passive Infrared Wall Switch Sensor	PIR Detection	Low Voltage	None	White

Ceiling Mount Sensor

- Occupancy and daylighting sensor featuring Passive Dual Technology (PIR + Microphonics™) for motion sensing
- Full on/off photocell switching control
- Adjustable settings (e.g. set-points) via push-button programming or SensorView software application
- Popular choice for a wide variety of spaces such as offices, classrooms and lobbies



ORDERING INFORMATION

Catalog Number	Description	Voltage Type	Detection Type	Coverage Type	Photocell	Auxiliary Relay
nCM PDT 10 RJB	Ceiling Mount Sensor	Low Voltage	PDT Dual Technology (PIR/Microphonics)	Large Motion 360°	n/a	None
nCM PDT 9 RJB	Ceiling Mount Sensor	Low Voltage	PDT Dual Technology (PIR/Microphonics)	Small Motion 360°	n/a	None
nCM PDT 10 RJB AR	Ceiling Mount Sensor	Low Voltage	PDT Dual Technology (PIR/Microphonics)	Large Motion 360°	n/a	Included
nCM PDT 9 RJB AR	Ceiling Mount Sensor	Low Voltage	PDT Dual Technology (PIR/Microphonics)	Small Motion 360°	n/a	Included
nCM 10 RJB	Ceiling Mount Sensor	Low Voltage	PIR Detection	Large Motion 360°	n/a	None
nCM 9 RJB	Ceiling Mount Sensor	Low Voltage	PIR Detection	Small Motion 360°	n/a	None
nCM 10 RJB AR	Ceiling Mount Sensor	Low Voltage	PIR Detection	Large Motion 360°	n/a	Included
nCM 9 RJB AR	Ceiling Mount Sensor	Low Voltage	PIR Detection	Small Motion 360°	n/a	Included



nLight®

nWV

Wide View Sensor

- Detects small motions up to 40 ft (12.19 m) away, and larger motions up to 70 ft
- Communicates with the nLight networked lighting controls platform
- Features adjustable time delay, 100 hr. lamp burn-in timer mode and a green LED indicator

ORDERING INFORMATION

Catalog Number	Description	Detection Type	Bracket Kit
nWV PDT 16 KIT	Corner Mount 120° Wide View Sensor	PDT Dual Technology (PIR/Microphonics)	Sensor & WV BR Bracket
nWV 16	Corner Mount 120° Wide View Sensor	PIR Technology	Sensor Only
nWV 16 KIT	Corner Mount 120° Wide View Sensor	PIR Technology	Sensor & WV BR Bracket
nWV PDT 16	Corner Mount 120° Wide View Sensor	PDT Dual Technology (PIR/Microphonics)	Sensor Only

nLight®

nPP16

Power/Relay Pack

- Communicates with the nLight networked lighting controls platform
- Self-contained relay switches line voltage load
- Supplies 40mA of Bus Power / RJ-45 port
- Optional out-of-box vacancy and partial-on modes



ORDERING INFORMATION

Catalog Number	Description	Dimming Type	Default Mode	Voltage	Emergency
nPP16 D EFP	Power/Relay Pack	0-10VDC Dimming output (via chase nipple)	Auto On (Switch Ch. 1)	120/277 VAC	None
nPP16 D ER EFP	Power/Relay Pack	0-10VDC Dimming output (via chase nipple)	Auto On (Switch Ch. 1)	120/277 VAC	UL924 Emergency Operation
nPP16 EFP	Power/Relay Pack	None	Auto On (Switch Ch. 1)	120/277 VAC	None
nPP16 ER EFP	Power/Relay Pack	None	Auto On (Switch Ch. 1)	120/277 VAC	UL924 Emergency Operation



nLight®

nPP20

Plug Load Control Power Pack

- Capable of switching loads up to 20 amps for general purpose receptacle load via an internal latching relay
- Communicates with the nLight networked lighting controls platform
- Designed with an elongated chase nipple that allows it to be attached directly through a ½" knockout into a junction box
- Ideal for multiple commercial and industrial applications including office spaces, open spaces and conference rooms

ORDERING INFORMATION

Catalog Number	Description	Voltage
nPP20 PL	Plug Load Control Power Pack	120VAC

nLight®

nPS 80

nLight Power Supply

- Generated power (up to 80mA at 15 VDC) is accessible to any system device
- Two RJ-45 ports, with current limited to 40 mA
- Provides system power over CAT-5e, is plenum rated and has a green LED indicator
- Ideal for multiple commercial and industrial applications including office spaces, open spaces and conference rooms



ORDERING INFORMATION

Catalog Number	Description	Voltage
nPS 80	nLight Power Supply	120/277VAC



nLight®

nAR40

Auxiliary Relay

- Convenient switching of low voltages for interfacing with non-nLight devices or control systems
- Communicates with the nLight networked lighting controls platform
- Can be attached directly through a 1/2" knockout onto a junction box
- Ideal for multiple commercial and industrial applications including office spaces, open spaces, and conference rooms

ORDERING INFORMATION

Catalog Number	Description
nAR40	Auxiliary Relay

nLight®

nBRG

8-port nLight Bridge

- Bridges act as hubs, aggregating and routing information across downstream zones and through system controllers
- Communicates with the nLight networked lighting controls platform
- Ideal for multiple commercial and industrial applications including office spaces, open spaces and conference rooms



ORDERING INFORMATION

Catalog Number	Description	Voltage	Power Supply
nBRG 8 KIT	8-port nLight Bridge	120/277V	Kit w/ Power Supply
nBRG 8	8-port nLight Bridge	120-277V	Unit Only



nLight® ECLYPSE™ System Controller

nECY

- The nLight® ECLYPSE™ System Controller connects an nLight lighting controls network to support connectivity and management over an IP network, control and device setting adjustment, integration with building management, integration with demand response, and more
- Each system controller supports up to 750 nLight Wired and nLight AIR devices. Additional controllers can connect and scale a system of lighting controls to a maximum of 20,000 devices
- Communicates over IP, allowing the system controller and connected lighting controls devices to be accessed and configured across a local area network
- Provides time-of-day and astronomical time clock capabilities for scheduled lighting control events and manages forwarding of global control channels and system profiles to affect devices on multiple controllers at the same time
- BACnet Testing Laboratories (BTL) listed as a BACnet Building Controller (B-BC)

ORDERING INFORMATION		Specifications subject to change.										Example: NECY MVOLT BAC ENC	
Series		Voltage		BACnet		AutoDR		Enclosure		Wi-Fi Adapter		Options	
nECY	nLight ECLYPSE	MVOLT	120-277VAC	(blank) BAC	Not enabled BACnet/IP & MS/TP enabled	(blank) ADR	Not enabled Open ADR VEN	ENC	NEMA Type 1 metal enclosure	(blank) NW	Includes Wi-Fi adapter No Wi-Fi Adapter included	GFXX	Touchscreen interface (model nGWY2 GFX, mounted separately), PS 150 power supply, CAT5 cable

BACnet is a registered trademark of ASHRAE. ASHRAE does not endorse, approve or test products for compliance with ASHRAE standards. Compliance of listed products to the requirements of ASHRAE Standard 135 is the responsibility of BACnet International (BI). BTL is a registered trademark of BI.

nLight®

nIO BT

Bluetooth® Low Energy (BLE) Communication Module

- Wireless communication between the local nLight zone and iOS/Android mobile application CLAIRITY™+
- Two RJ-45 ports to be placed in any location on a local nLight zone
- Easily modify nLight Wired device programming to aid in meeting energy code requirements
- Simple, cost effective wireless configuration of nLight Wired standalone zones via BLE



ORDERING INFORMATION

Catalog Number	Description
nIO BT	BLE Communication Module
nIO	nLight Low Energy Communication Module

The Bluetooth® word mark and logos are registered trademarks owned by Bluetooth SIG, Inc. and any use of such marks by Acuity Brands is under license. Other trademarks and trade names are those of their respective owners.



nLight®

CAT5e

Pre-terminated Cable

- CAT-5e patch cables are pre-terminated with RJ45 style connectors on both ends
- All cables are plenum rated and conform to the T568B pin-out specification
- The RJ45 terminations are unbooted (i.e. no molded strain relief) which allows for easier connection to nLight devices
- Cables are available in several lengths for convenience and all cables are white
- The maximum cable length per zone is 1500 feet

ORDERING INFORMATION

Specifications subject to change.

Example: CAT5 5FT J1

Series		Lengths		Packaging	
CAT5	CAT5e Cable	5FT	5 Foot	J1	Job Pack of 1
		10FT	10 Foot		
		15FT	15 Foot		
		20FT	20 Foot		

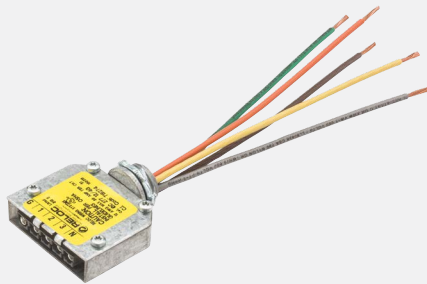


A circular collage of two images. The top image shows a worker in a blue hard hat and safety glasses, wearing grey gloves, working on a steel structure. The bottom image shows a worker in an orange shirt, also wearing safety glasses, working on a steel structure with a red laser line visible. The text "Wiring Solutions" is overlaid on a green rectangular background in the center.

Wiring Solutions

Wiring Solutions





RELOC® Wiring Solutions

OC

OnePass® Converter

- The OC provides the interface between hardwiring and RELOC at the homerun location
- The OC is a single female port available with 6 inch wire leads standard or with armored cable
- Fits a standard 1/2" trade size knockout
- Available in varying lengths to suit most common fixture spacing requirements
- Auto-latching springs prevent accidental disengagement

ORDERING INFORMATION		Specifications subject to change.								Example: OC 277 12/4G			
Series		Voltage		Conductors		Length		Controls Wiring		Finish		Options	
OC	OnePass® Converter/ Circuit Selector	277	277V	12/4G	Five 12 AWG conductors, including one 12 AWG ground	(blank)	6" wire leads	(blank)	Not required	(blank)	Not required	(blank)	Not required
		480	480V										

RELOC® Wiring Solutions

OC2

OnePass® Cables

- The OC2 is a male/female cable that provides additional length anywhere throughout the OnePass® system
- The OC2 is a splitter and cable extender in one easy-to-use component
- Used to bring power to OCS, OCU or OD in industrial applications, or to split a circuit into two directions
- Cables can also provide power to miscellaneous devices such as exits, emergency units, convenience power and access floor systems
- Safety-keying prevents accidental mating of components with different voltages



ORDERING INFORMATION				Specifications subject to change.										Example: OC2 277 12/4G 25			
Series		Voltage		Conductors		Length	Controls Wiring		Finish		Options						
OC2	OnePass® Cables	277	277V	10/2G	Three 10 AWG conductors, including one 10 AWG ground	01 ft up to 75 ft	(blank)	Not required	(blank)	Not required	(blank)	Not required					
		480	480V	12/2G	Three 12 AWG conductors, including one 12 AWG ground												
				12/3G	Four 12 AWG conductors, including one 12 AWG ground												
				12/4G	Five 12 AWG conductors, including one 12 AWG ground												



RELOC® Wiring Solutions

OCS

OnePass® Circuit Selector

- Circuit selection is made easy by moving a slider into position
- Can be prewired by fixture manufacturer or field installed
- Rated for use on 20-amp branch circuits
- The OCS molded circuit identifier denotes position of each conductor
- Safety-keying prevents accidental mating of components with different voltages

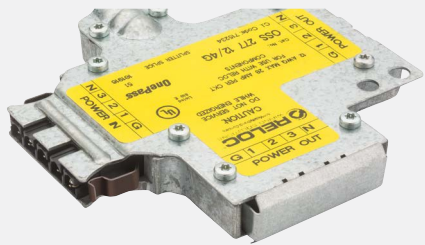
ORDERING INFORMATION		Specifications subject to change.								Example: OCS 277 10			
Series		Voltage		Conductors		Length		Modular Plug		Connector Type		Device Color	
OCS	OnePass® Circuit Selector	277	277V	For 277 Volts		(blank)	6 feet	(blank)	Not required	(blank)	Not required	(blank)	White
		480	480V	(blank)	Three 18 AWG conductors, including ground	10	10 feet						
						15	15 feet						
				For 480 Volts									
				(blank)	Four 18 AWG conductors, including ground								

RELOC® Wiring Solutions

OSS

OnePass® Splitter Splice

- The OSS connects to other One Pass® system devices and splits the branch circuit wiring into two directions
- Rated for use on 20-amp branch circuits
- Color-coded labels for quick voltage identification
- All conductors are 12 AWG copper with -20°C to +90°C thermoplastic insulation rated 600V



ORDERING INFORMATION		Specifications subject to change.			Example: OSS 277 12/4G	
Series		Voltage		Conductors	Controls Wiring	
OSS OnePass® Splitter Splice		277	277V	12/4G Five 12 AWG conductors, including one 12 AWG ground	(blank)	Not required
		480	480V			







DesignLights Consortium®

The DesignLights Consortium (DLC) is a non-profit organization promoting high-quality, energy-efficient lighting products in collaboration with utilities and energy-efficiency program members, manufacturers, lighting designers, and federal, state, and local entities.

To find out more about DLC and which Acuity Brands® products are listed, visit www.designlights.org/QPL.

California Title 24 and 20

Title 24 (T24) of the California Code of Regulations sets forth California's Energy Efficiency Standards for residential and nonresidential applications.

California Code of Regulations, Title 20 (T20), Sections 1601–1608 are efficiency appliance standards, which restrict the sale of non-compliant product within the state of California.

Nighttime Friendly™

Nighttime Friendly designates products with superior optical control that are consistent with goals of USGBC LEED® program and meet Green Globes™ product criteria for light pollution reduction. These products are full cutoff and no more than 10% of the lumens from the luminaire are emitted above 80° from nadir.



NSF

The NSF (National Sanitation Foundation) certification in lighting represents compliance with specific standards related to the sanitation and safety of lighting fixtures in environments where food is prepared or processed, such as commercial kitchens, food manufacturing facilities, and restaurants.



Wet Location

A wet location is one in which water may drip, splash, or flow on or against electrical equipment. This icon indicates that the fixture was engineered so that water cannot enter or accumulate in the wireway, lampholders or other electrical parts.



BAA

Product with the BAA option is assembled in the USA and meets the Buy America(n) government procurement requirements under FAR, DFARS and DOT regulations. Please refer to www.acuitybrands.com/buy-american for additional information.



ENERGY STAR®

ENERGY STAR is a joint program of the U.S. Environmental Protection Agency and the U.S. Department of Energy helping us all save money and protect the environment through energy-efficient products and practices.

Visit www.energystar.gov for more information.



Damp Location

Whether exterior or interior, a damp location is one that is normally or periodically subject to condensation or moisture in, on or adjacent to electrical equipment. This icon indicates fixtures that were designed to tolerate damp environments.



IP Rated

The IP rating system is used to indicate the level of protection that lighting fixtures provide against the intrusion of solid objects (like dust) and liquids (such as water). The IP rating is expressed as "IP" followed by two digits.



IC Rated

Designed to be installed in areas where they will be in direct contact with insulation.



IP66

IP66 refers to the product's ability to resist ingress of dust; it's also protected against heavy seas or powerful jets in harmful quantities.



nLight

nLight® is your networked lighting controls platform, for indoor and outdoor applications, providing wired or wireless options. Scaling from room to building to campus-wide applications, it is the one platform that grows with your business today and tomorrow; to seamlessly address energy cost optimization, building code compliance, improved occupant comfort, and much more.



Bluetooth®

Indicates that the product is trusted and tested to work with any other Bluetooth products. The Bluetooth® word mark and logos are registered trademarks owned by Bluetooth SIG, Inc. and any use of such marks by Acuity Brands is under license. Other trademarks and trade names are those of their respective owners.

Declare.

Declare

Declare is a nutrition label for building products. It is designed to help specifiers quickly identify products that meet their project requirements. Declare labels disclose all intentionally-added ingredients and residuals at or above 100ppm (0.01%) present in the final product by weight. Each ingredient must be reported with a chemical name, CAS number, and percentage or percentage range.



SensorSwitch

SensorSwitch™ offers standalone wired and wireless lighting controls solutions designed for room-based applications. Our products offer reliable performance and ease of installation.



CSA

Indicates that the product was tested and has met the North America certification and standard requirements.



Low UGR

Easily find LED Lighting with low UGR using filters and icons and calculate UGR in your lighting design using available tools.



eldoLED

eldoLED LED drivers empower quality of light, dimming and flicker-safe capabilities, and deliver intelligence in control options. With an industry-leading portfolio, eldoLED drivers enable applications from downlight to linear, industrial to outdoor, and mainstream to high end.



UL Certified

Indicates that UL Solutions has tested representative samples of a product and determined that the product meets specific, defined requirements.



IK10

The IK rating refers to impact protection. It is a 1 to 10 system with a higher number indicating a more robust product able to withstand a greater impact.



Contractor Resources Page

One-stop shop for tools and resources to help grow your business!

- Direct link to our contractor programs
- Virtual tools & programs
- Installation videos
- Buy America(n) information
- Contractor Corner Newsletter registration

www.acuitybrands.com/contractor-resources



Rebate Search Tool

Use our search tool to find Acuity Brands® products on the DesignLights Consortium® Qualified Products List. You can even calculate the estimated lighting rebate dollars available in your area!

Start searching at:

www.acuitybrands.com/DLCandRebates

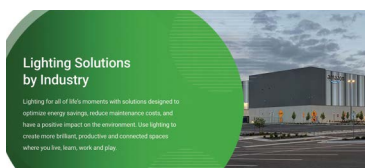


Acuity Academy

Whether you are looking to enroll in instructor-led training, take an e-learning course or watch recorded webinars, Acuity Academy is accessible 24/7/365.

Start searching at:

www.acuitybrands.com/acuityacademy



Solutions by Industry

Identify products, services, and technology to help differentiate your project for all applications.

Start searching at:

www.acuitybrands.com/resources/industries



Visual Lighting Software

A software tool to help you develop a lighting design for indoor and outdoor spaces. Generate electrical, daylighting and UGR calculations and photometrically accurate renderings to visualize your design.

www.visual-3d.com/software/designtools.aspx



Augmented Reality (AR) Mobile Application

Mobile application to make visualizing lighting fixtures in your space a breeze! Scan your space, choose your product and place the AR fixture in your space. Easily view products and download spec sheets straight from the app.

www.acuitybrands.com/resources/customer-tools/ar

Index

Model Number	Page	Model Number	Page	Model Number	Page
CLX	8	INIT3 A	44	SPODMA	79
CPX	9	INIT3 D	44	SPODMRA	79
LSIX	10	INIT3SQ A	45	SSW	80
STACK	11	INIT3SQ D	45	CM	81
BLT	12	LDN4/LDN6 Switchable	46	CMR	81
2BLT2R	13	LDN4	47	PP16	82
2BLT4R	14	LDN6	48	rPOD Micro	83
BLWP	15	LBR4	49	rPODBA	84
WHSPR	16	LBR6	49	rPODLA	84
WHSPR LCTR	16	LBR8	49	rCMS	85
SL2L	17	EDG	52	rCMSB	85
SL4L	17	EDGR	52	rPP20	86
SPRLED	18	ELM2L	53	nPODMA	87
PLL10ID	20	ELM4L	54	nWSXA	88
PLN8	21	ELM6L	54	nCM	89
S2PD	22	DSX0	58	nWV	90
S2PID	23	DSX1	59	nPP16	90
S4PD	25	DSX2	60	nPP20	92
S4PID	26	RSX1	62	nPS 80	93
CPHB	30	RSX2	63	nAR40	94
IBG	31	RSX3	64	nBRG	95
IBGN	32	RSX4	65	nECY	96
FEM	33	RSXF1	66	nIO BT	97
ICO2	36	RSXF2	67	CAT5	98
ICO4	37	RSXF3	68	OC	102
EVO2	38	RSXF4	69	OC2	103
EVO4	39	WDGE1	70	OCS	104
EVO6	39	WDGE2	71-72	OSS	105
EVO2SQ	40	WDGE3	73		
EVO4SQ	41	WDGE4	74		
EVO6SQ	42	WSXA	78		



ACULUX®

gotham

LITHONIA
LIGHTING

MARK
ARCHITECTURAL LIGHTING

hLIGHT

sensorswitch

RELOC®
WIRING SOLUTIONS

www.acuitybrands.com/designselect