



# Sign-Vue® LED III

## SVLED3 – Roadway Sign Lighting

### Roadway Applications

#### Panel-Vue® Optics (PNL)

– Sign heights  
from 5 to 12 feet

#### Sign-Vue® Optics (SVL)

– Sign heights  
from 12 to 20 feet

The Sign-Vue LED III is the premiere solution designed to illuminate highway guide signs and other roadway signage applications. Built on a new 3rd generation light engine and dedicated optics for any size sign lighting application, the Sign-Vue LED III provides exceptionally uniform illumination while saving energy and reducing maintenance costs. Built on the design philosophy “MORE LIGHT WHERE YOU NEED IT–ON THE BOARD,” watt for watt, the Sign-Vue LED III delivers superior uniformity and higher LPW than all competitors.

- + Replaces up to 400W HID fixtures with 5,000-20,000 lumens
- + Exceptional uniformity with 3000K, 4000K or 5000K CCT, 70 CRI minimum standard with 80 CRI option
- + Robust IP66 rated silicone and prismatic glass optic design increases performance and reduces dirt depreciation
- + Low profile form factor and under 25 lbs.
- + 20+ years service life with lumen maintenance of L70/100,000 hours
- + 5,000 hour rated salt spray finish
- + ANSI C136 Extreme 20kV/10kA surge protection standard, with indicator light feature
- + ZetaShield® XVOLT driver option protects against dropped neutral and other poor power quality related issues
- + Simplified installation with tool less entry and pre-wired three-stage terminal block
- + Fixture mounts to existing 1.25" round or 1.5" square tube standard with optional 1.5" round pipe mounting available
- + Field-adjustable lumen output provides flexibility for both rural and urban applications

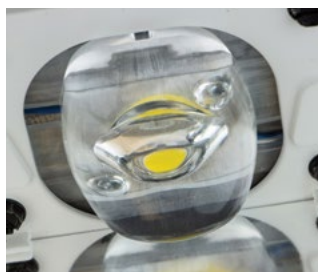


# Sign-Vue® LED III

## SVLED3 – Roadway Sign Lighting

### The lowest total cost of ownership over the life of the installation

The Holophane Sign-Vue LED III is an innovative fixture designed to meet the roadway sign lighting needs of DOTs. Engineered with breakthrough LEDs and optics technology, the Sign-Vue LED III offers highly uniform illumination to improve performance and save energy. This is combined with precision light control that reduces light spill to create an environmentally friendly solution that protects the skies and the planet.



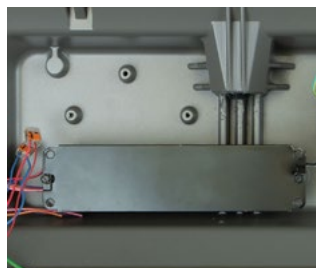
Precision molded silicone optics are combined with a durable prismatic glass refractor to create the most uniform illumination possible on your sign.



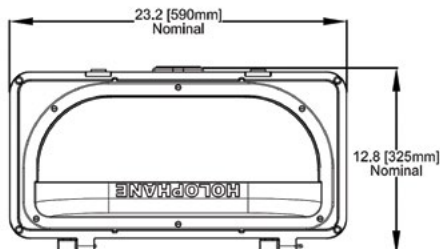
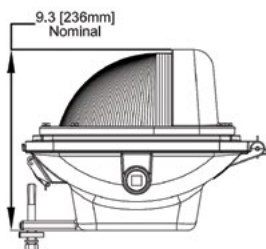
Installation and maintenance are simplified through user-friendly features such as tool-less entry and prewired 3-stage terminal block.



The latest in technology is utilized for maximum energy savings, including superior protection against dirty power and surges.



- + 1.25" round pipe mount
- + 1.5" square tube mount
- + New optional 1.5" round pipe mounting shown



Max Weight: 26.1 lbs (11.8 Kg)  
Max EPA: 0.67 ft<sup>2</sup> (.06 m<sup>2</sup>)  
Standards Ambient Rating: 40°C Wet Location



Warranty Five-year limited warranty. Full warranty terms located at [www.acuitybrands.com/support/warranty](http://www.acuitybrands.com/support/warranty)  
Product specifications may change without notice. Please contact your sales representative for the latest product information.