

A photograph of a stage with red curtains and an American flag. The stage is in a room with a drop ceiling and track lighting. The image is split diagonally by a blue line. The top left is white, the bottom right is blue, and the rest is the photograph of the stage.

nLight® Snapshot Controller

DMX Control

nLight Snapshot Controller

The nLight networked lighting controls platform has added DMX control with the nLight Snapshot Controller (nPWDMX). The nLight Snapshot leverages the power of nLight with the artistry and reliability of Pathway Connectivity Solutions® for DMX control in a simple and unified solution. The device is the gateway linking the nLight controls platform and DMX512 products, enabling easy, two-way communication between DMX and nLight.

The nLight Snapshot provides bi-directional communication between nLight and the DMX console for simultaneous control of DMX lighting and nLight enabled commercial lighting. Through this device, nLight Wired controls (i.e., wall switches or sensors) can directly control theatrical DMX lights, and the DMX lighting control console can dim or turn off the nLight controlled lights or initiate scenes.

A "Snapshot", like a nLight scene, is the recording of fixed DMX512 color and intensity levels created by any theatrical console or similar controller.

Features

- Ability for nLight to trigger up to sixteen DMX snapshots for RGBx and cafetorium applications.
- Any DMX control console has the ability to control nLight Wired devices.
- Determines the priority of commands, nLight or DMX, based on sequence of operations.
- Secure Pathway DMX Networking, California Title 1.81.26 compliant.

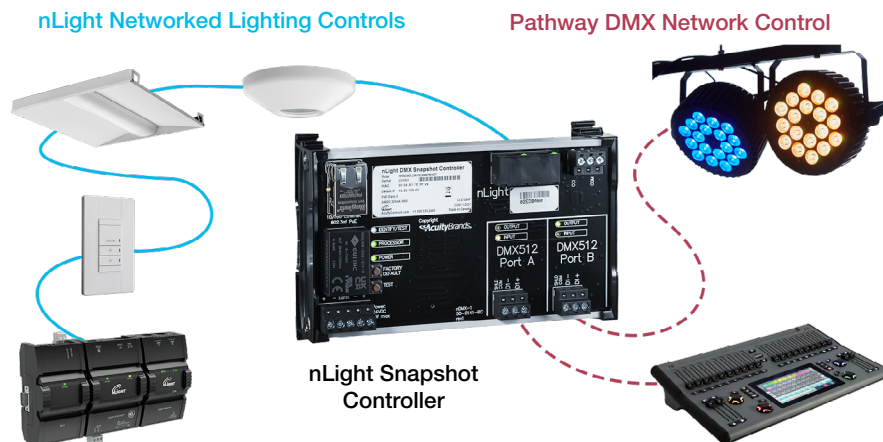


Powered by **Pathway™**



nLight Snapshot Controller in an Enclosure

With an nLight ECLYPSE™, a stand-alone application expands into a networked system. The nLight ECLYPSE allows the capability to change the lighting color via building management system (BMS) integration. Use the nLight ECLYPSE to trigger a scene that includes one of the 16 outputs (DMX snapshots) to illuminate an RGBx interior space or outside façade.



Complete the Solution with Pathway DMX Devices

Many jobs with DMX controlled lights require additional support devices such as opto-splitters and data receptacles. The next step in your cafetorium project is to include the Pathway product portfolio to complete the solution.

Design and install cafetorium applications that offer seamless operation between nLight and DMX controls to aid in code compliance and energy management.

Use Visual Controls to help you design projects with nLight lighting controls and Pathway DMX networking gear.



Pathway Connectivity Solutions is your dynamic DMX lighting network backbone for projects that include commercial DMX and high-end entertainment lighting control systems.

Visit the Pathway website for more information:

www.pathwayconnect.com

Complementary Software for DMX and Networked Lighting Control

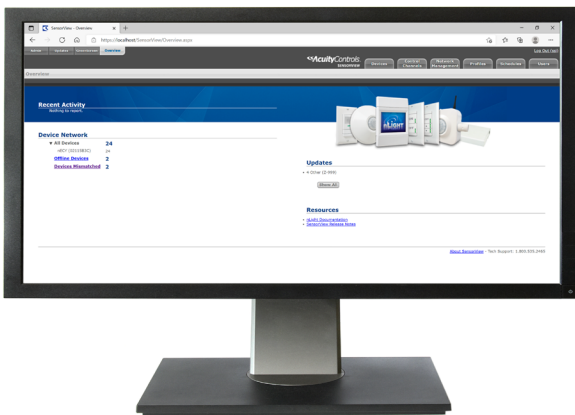
The nLight Snapshot Controller requires a toolset of free software solutions, including SensorView and Pathscape™, for ease of configuration and commissioning.

- nLight Snapshot appears in SensorView as a device with 16 outputs and 1 input (composed of 16 virtual wall switches and 16 scenes).
- Pathscape is used to configure 16 DMX snapshots that respond to nLight outputs and can route DMX channels to nLight channels using theatrical console fade rates. The console can also trigger nLight profile or preset scenes.



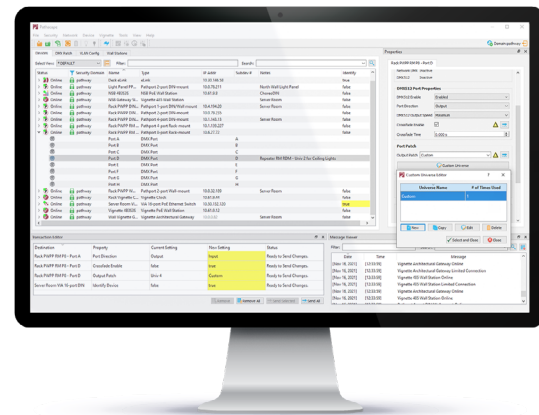
SensorView Software

SensorView is a free, intuitive, and easy-to-use browser-based nLight software solution that gives users the ability to remotely configure and monitor nLight Wired and nLight AIR (Wireless) luminaires and control devices. It provides a simple and quick setup tool for creating custom configuration profiles that can either be scheduled or run on demand. SensorView also assists with system commissioning by indicating and reporting on sensor and controller settings and displaying live device status.



Pathscape™ Software

Pathscape software is a free, user-friendly tool that simplifies and streamlines DMX lighting network setup, management, and status monitoring. All networked Pathway devices are listed in one place, in customizable display formats. Colorful icons show the status of the devices at-a-glance, and it is easy to drill down to see how devices are interconnected.



Visit our website for more information:
www.nlightcontrols.com