



FEX

Industrial Linear LED Low Bay



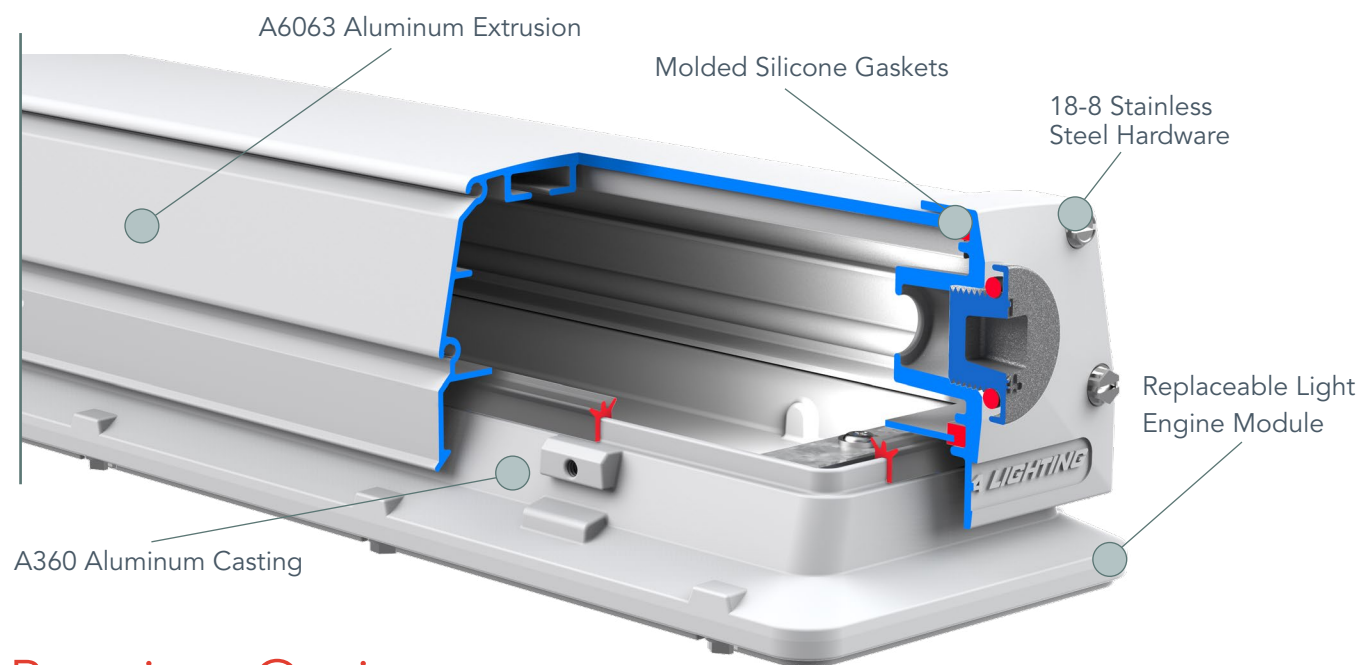
DESIGN PERFORMANCE VERSATILITY

Extreme Design for Extreme Environments

DESIGN

The all aluminum housing with tongue and groove seal design of the FEX provide the robustness needed for your most extreme environments without sacrificing the simplicity of a linear luminaire.

Construction



Premium Optics

- Frosted Glass Lens
- Clear Glass Lens
- Frosted Polycarbonate Lens
- Clear Polycarbonate
- Medium, Wide and Parking Garage Distributions

Mounting Options

Surface

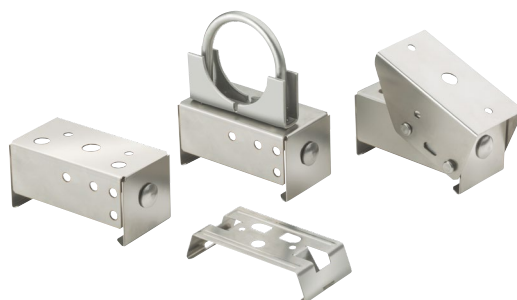
- Standard Bracket
- Rigid Mount Bracket (RMBK)
- Rigid Mount Angle (RMBA)
- Wall mount (RMBK)
- Wall Off-set Mount (RMBA)

Suspended

- Y-toggle
- Chain
- Aircraft Cable
- Pendant Monopoint (2')

Pole

- Rigid Mount U-bolt (RMBU)



PERFORMANCE

When you need reliability, longevity and precision for nearly every application FEX has your back.

Listings

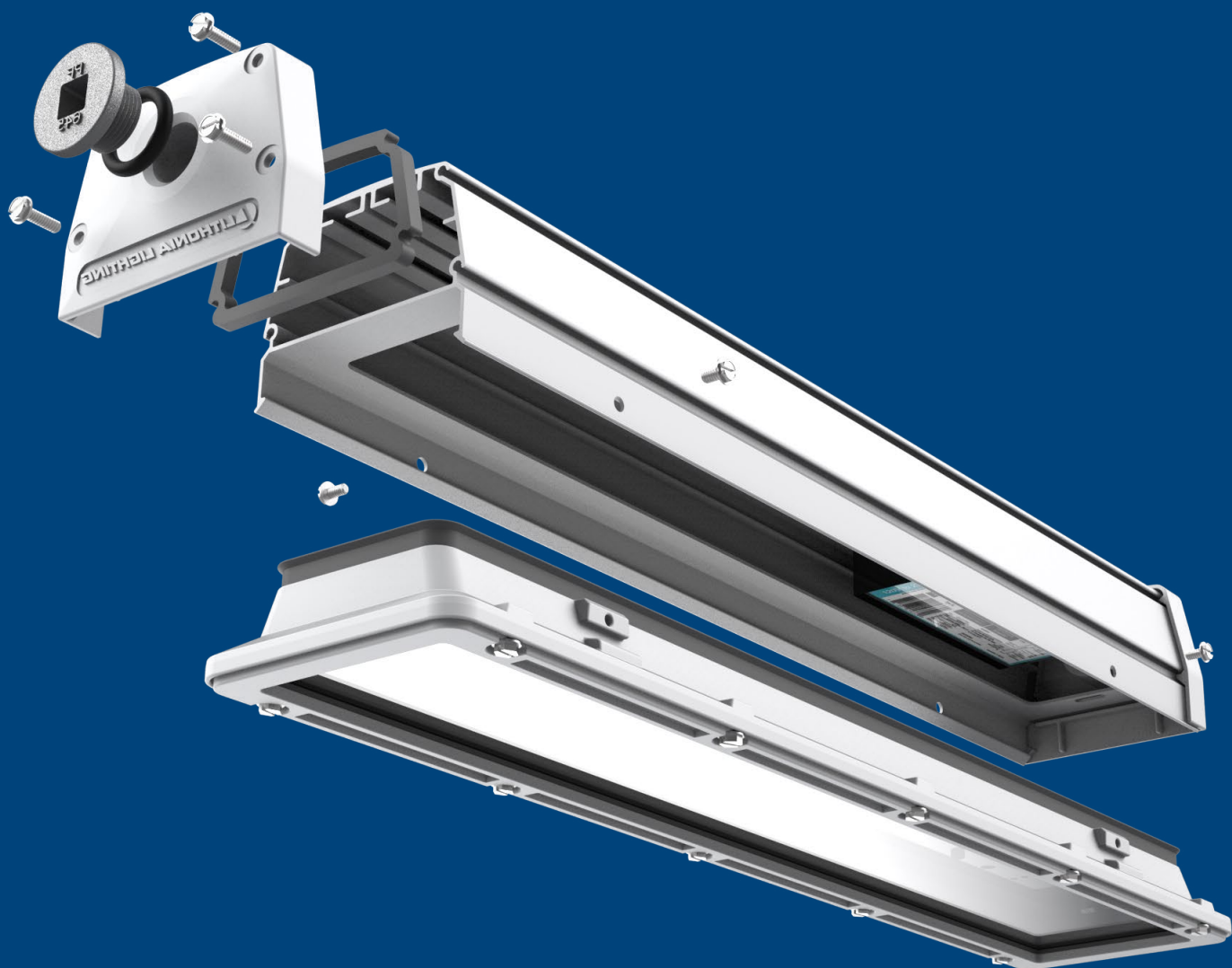
- **Up to 70°C listed standard** with full light output for max performance in industrial applications
- **6kV surge protection** standard to protect electronics from surges (per ANSI C82.77-5-2015)
- **Up to 155 LPW** for lower fixture counts and higher DLC rebates
- **IP65, 66, 67, 69K Rated** giving peace of mind during hose down and extreme conditions

Additional Features

- **NSF Splash Zone 2** for food service applications

Key Specs

- **2,000 - 28,000 Lumens** allowing for a wide range of potential applications
- **L89 @ 60,000 Hours** providing lasting light output
- **All 316-/18-8 Hardware** provides added corrosion resistance for harsh environments
- **Click-In/Click-Out Design** for easy and quick maintenance, upgrades, and installation
- **Embedded Controls** for added energy savings
- **Glass and Polycarbonate Lens Options** give versatility to application possibilities



VERSATILITY

No matter the project, big or small, easy or challenging, FEX fits the bill.

Solutions



Expecting diesel/corrosive fumes?

FEX has got you covered with its glass lens option



Need to be able to thru wire but want a sensor?

FEX has got you covered with integrated water tight sensors



Need to be able to quickly reconfigure the lights in the space but remain water tight

FEX has got you covered with water tight plugs



Expecting vandals?

FEX has got you covered with its rugged, all aluminum construction and IK10 ratings

Applications

- Parking Structures
- Tunnels
- Shipping Ports
- Food and Beverage Facilities
- Outdoor, Canopy Walkways
- Manufacturing
- Waste Water Treatment
- Specialty Retail
- And many more!



CONTROLS

Maximize your energy savings by combining FEX with best-in-class controls.

Networked Controls

nLight® networked lighting controls is the preferred controls solution for industrial luminaires in hard to reach places

- **Energy Savings**

Adding an nLight AIR wireless embedded sensor to FEX can save you up to 50% on energy costs*

- **Easy to Use**

The nLight AIR embedded rSBG sensor works as a basic occupancy sensor and photocell out of the box. Use the CLAIRITY™ Pro app to adjust sensor settings and configure the light you need.

- **Scalability**

With nLight, your space is future-ready and can be tied into other nLight AIR or nLight wired enabled lighting and controls solutions - all on your timeline.



*Based on the September 21, 2017 DLC study: *Energy Savings from Networked Lighting Control (NLC) Systems*

