



## WPX0 LED Wall Pack Luminaire

### Best Value in Wall Mounted Lighting

We raised the standard in wall-mounted lighting – again! The Lithonia Lighting® WPX family of full-cutoff LED wall packs has a new addition. The WPX0 is a feature-rich wall pack in a modern, compact form, ideal for above-the-door applications for commercial and residential buildings.

#### Loaded with Standard Features

WPX0 wall pack luminaires feature a uniform photometric distribution with four adjustable lumen outputs, three switchable color temperatures, and a switchable dusk-to-dawn photocell. WPX0 is highly customizable and the simplified stock benefits both distributors and contractors. 24 SKUs in one fixture!

#### Architectural Look at Distributor Stock Prices

The WPX family of full cut-off LED wall packs are the best choice to meet customers' needs for an aesthetically appealing form, photometric performance and low initial cost. The new standard in wall-mounted lighting solutions!

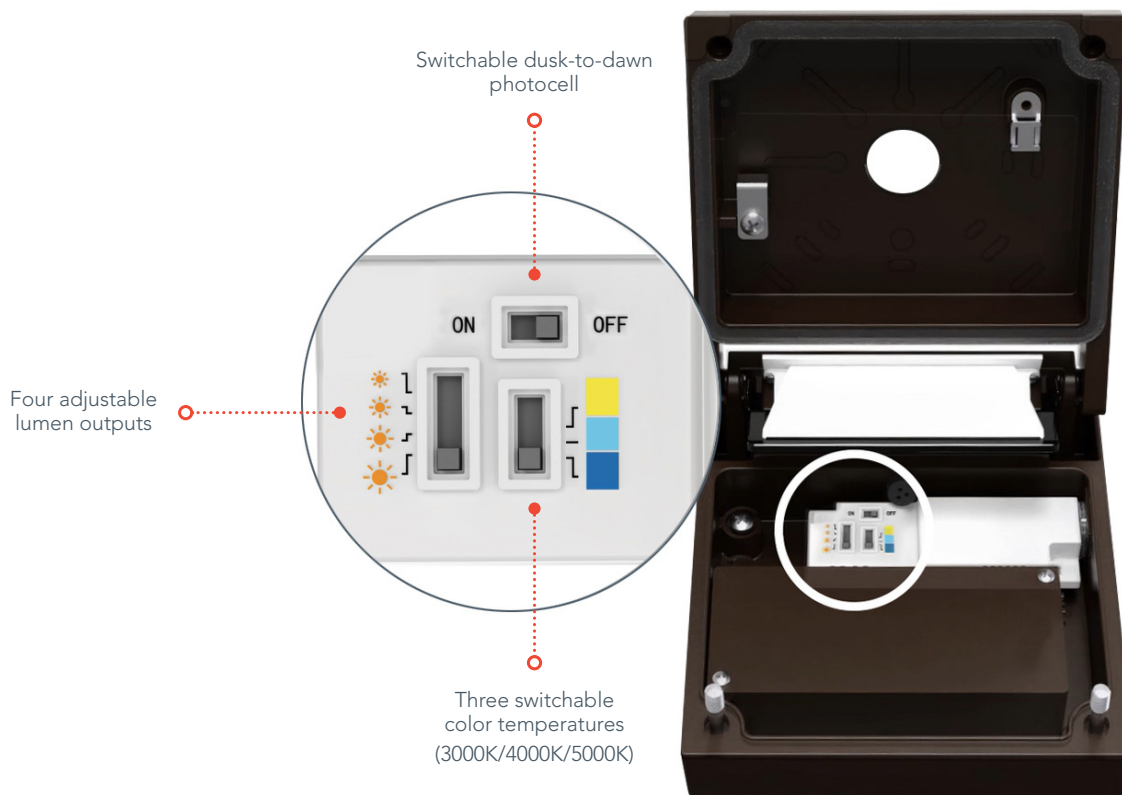


#### Quick Facts

- Adjustable Lumen Output (ALO) delivers 850 - 1,650 lumens
- Switchable color temperature (3000K/4000K/5000K)
- Switchable photocell for dusk-to-dawn operation
- Replace up to 70W MH
- DLC Premium listed
- 5-year limited warranty



# WPX0 LED Wall Pack Luminaire



## Additional Key Features






Stylish and compact with modern clean lines that blend into architecture. WPX0 is ideal for commercial and residential over-the-door applications.



WPX0 is easily installed onto any standard junction box. Simply make the connections in the integral wiring compartment and WPX0 is ready to use.



With four sizes and packages ranging from 850 – 9,200 lumens, the WPX family is a complete site-wide wall-mounted lighting solution.

Catalog Number	CI Code	UPC	Features
WPX0 LED ALO SWW2 MVOLT PE DDBXD M2	*276U4U	00196182511806	 Adjustable Lumen Output  Switchable CCT  Dusk-to-Dawn Operation

Visit [www.lithonia.com](http://www.lithonia.com) for more information