



# LIGHTING SOLUTIONS FOR MANUFACTURING APPLICATIONS

# EXCEPTIONAL PRODUCTS, SERVICES, AND TECHNOLOGY TO HELP DIFFERENTIATE YOUR MANUFACTURING FACILITIES

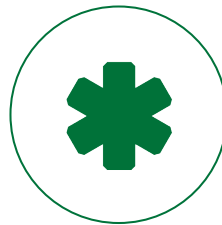
Did you know that falls, slips, and trips are the second most common reason for fatal occupational injuries? From semiconductor and electric vehicle (EV) battery production to assembly lines and metal fabrication, safety and efficiency are paramount for manufacturing operations. Lighting for these applications, paired with control capabilities, must deliver precise vertical illumination, superior performance, and reliability to optimize operating costs and support a safe working environment.

## FIND RECOMMENDED LIGHTING SOLUTIONS FOR MANUFACTURING APPLICATIONS

Lighting and controls solutions tailored to your facility, combined with the information you need to complete your project. Get spec sheets, BIM and IES files, utility rebate calculations and more.



Hazardous



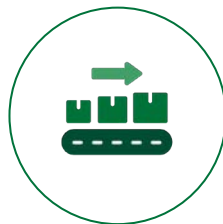
Life Safety



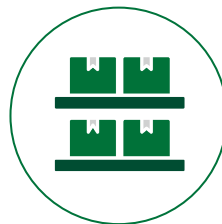
Loading Docks



Outdoor Area



Production Area



Storage



Task





## SPOTLIGHT ON: LIGHTING AND CONTROLS TAILORED TO MANUFACTURING APPLICATIONS



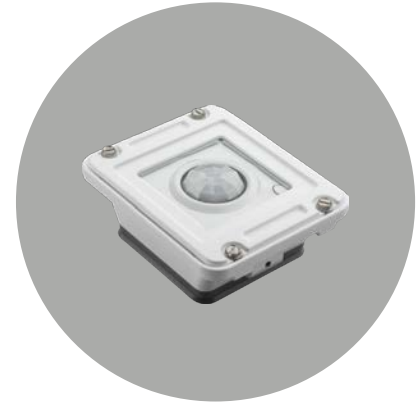
### Phuzion™ High Bays

The Phuzion™ family of LED high bays combines the technical innovations of LED and prismatic borosilicate glass optics with high lumen outputs, nLight AIR™ Wireless controls, and DLC Premium listings to safely and effectively illuminate your facility.



### Predator® LED Utility Floodlights

By combining the robust mechanical design features with the optical expertise and permanence of prismatic glass, the Predator LED industrial utility floodlight excels as a direct retrofit for both yoke and knuckle mount floodlights.



### nLight®

nLight wired and wireless networked lighting controls are easily specified, installed and scaled to grow with your building, perimeter, and site applications. Indoor and outdoor spaces can be controlled seamlessly while both saving energy and meeting code requirements.





SEE WHAT LIGHTING CAN DO FOR YOUR  
MANUFACTURING FACILITIES

